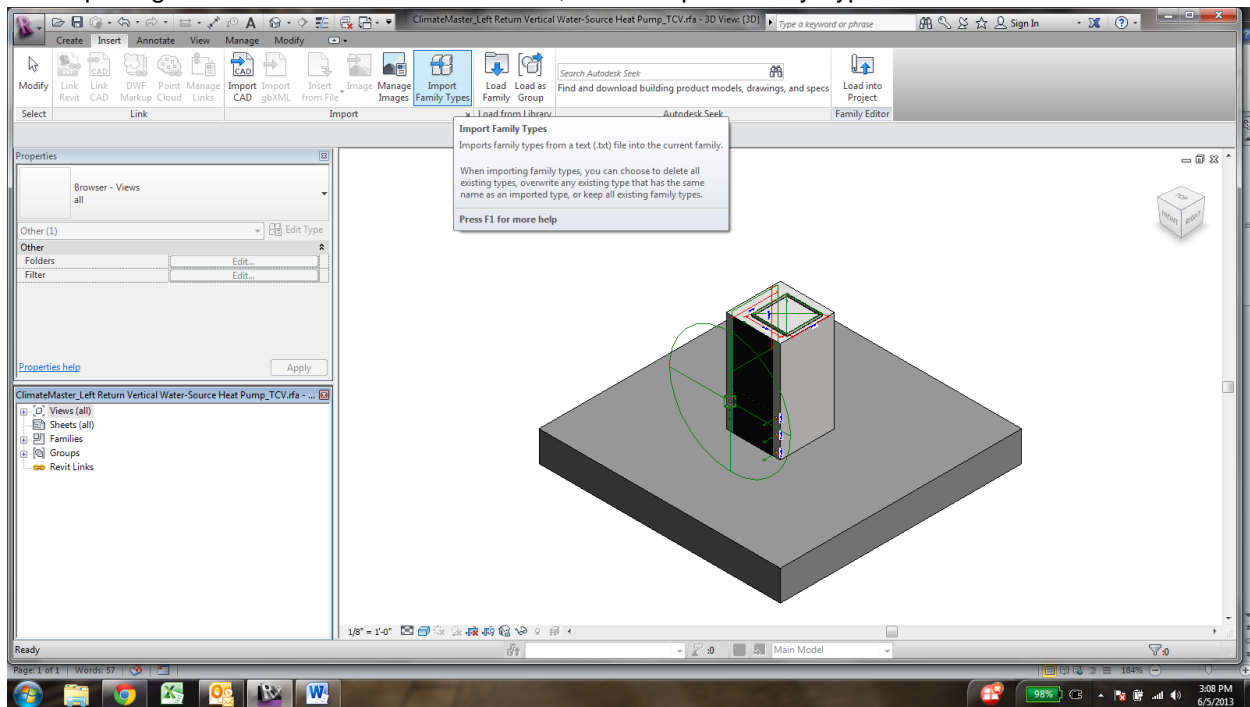
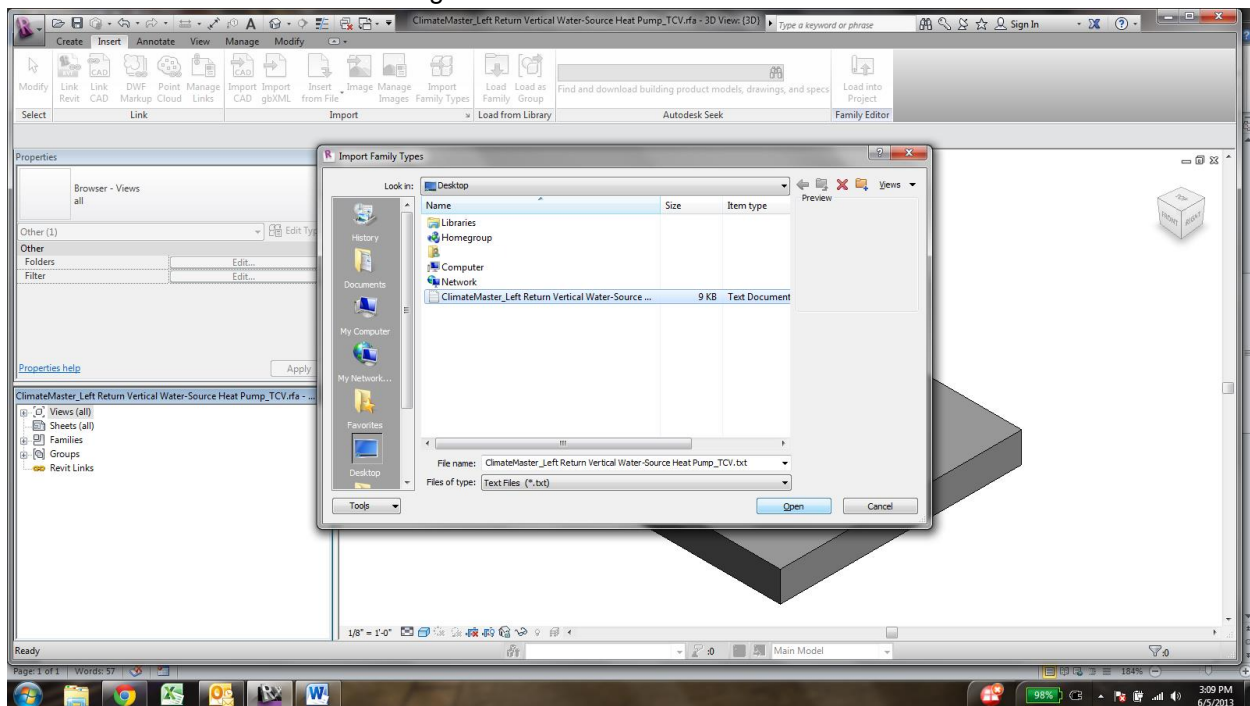


This instruction is provided to assist you in loading ClimateMaster Revit models and upgrading to your current version of Revit. This instruction set was created utilizing Revit 2013, however, dialog boxes may be slightly different depending on the version of Revit you are currently using.

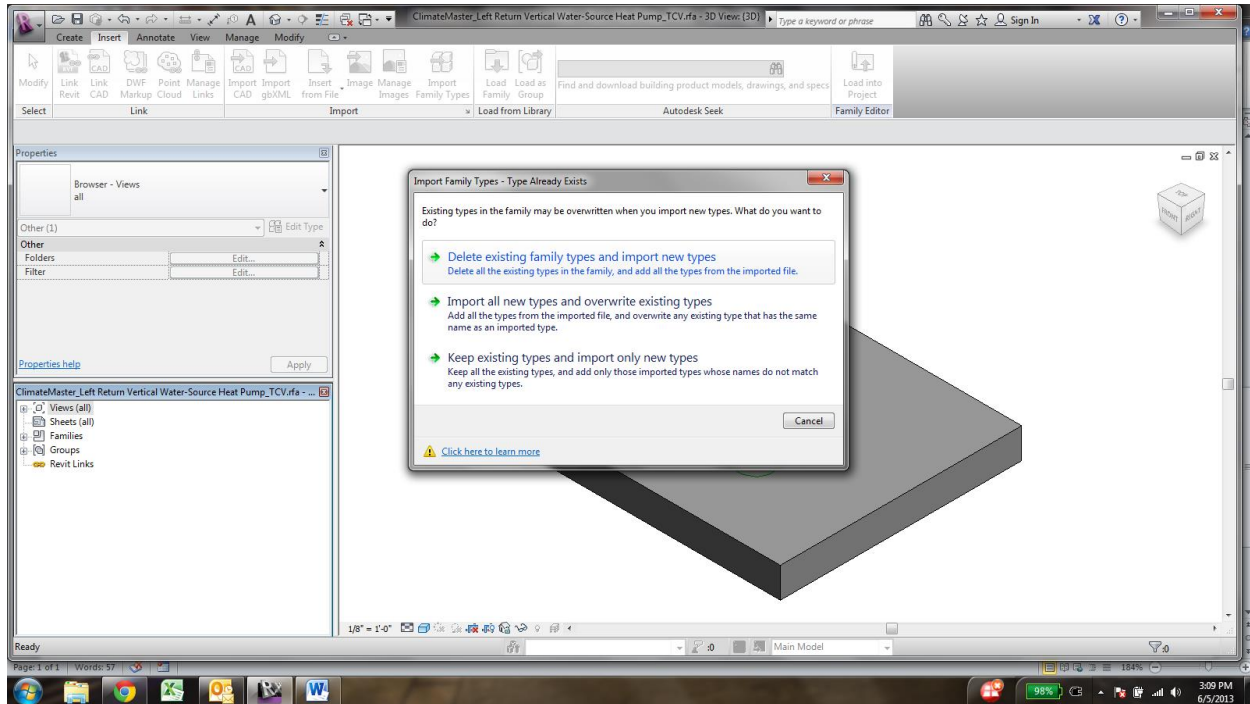
1. After opening the ClimateMaster Revit RFA file, select Import Family Types from the insert ribbon.



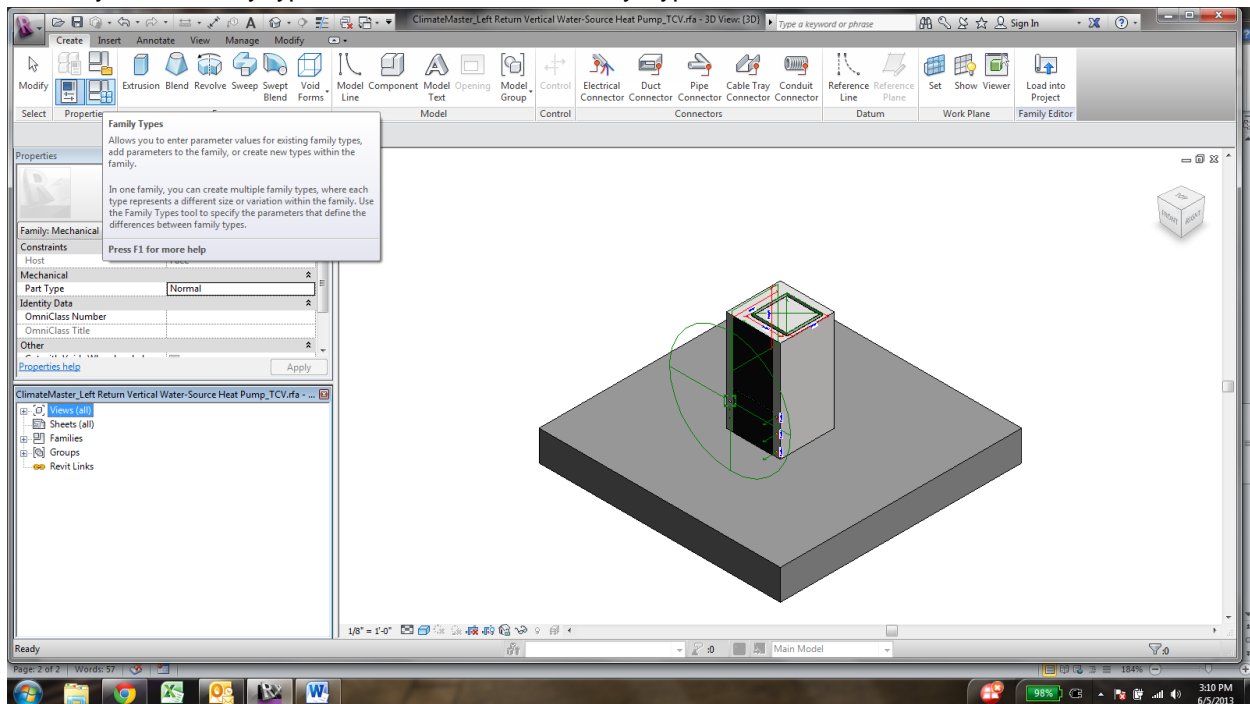
2. Locate the included txt file containing the BIM data for the associated model.



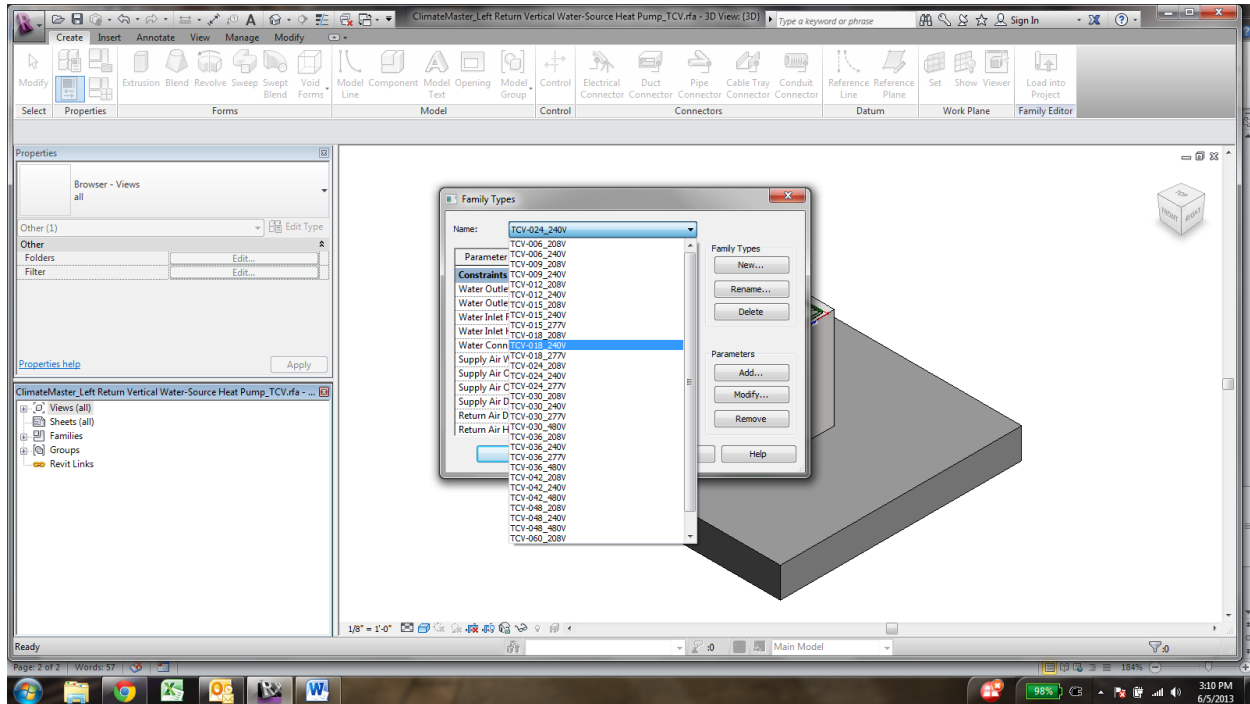
3. Select “Delete existing family types and import new types” from the import dialog box.



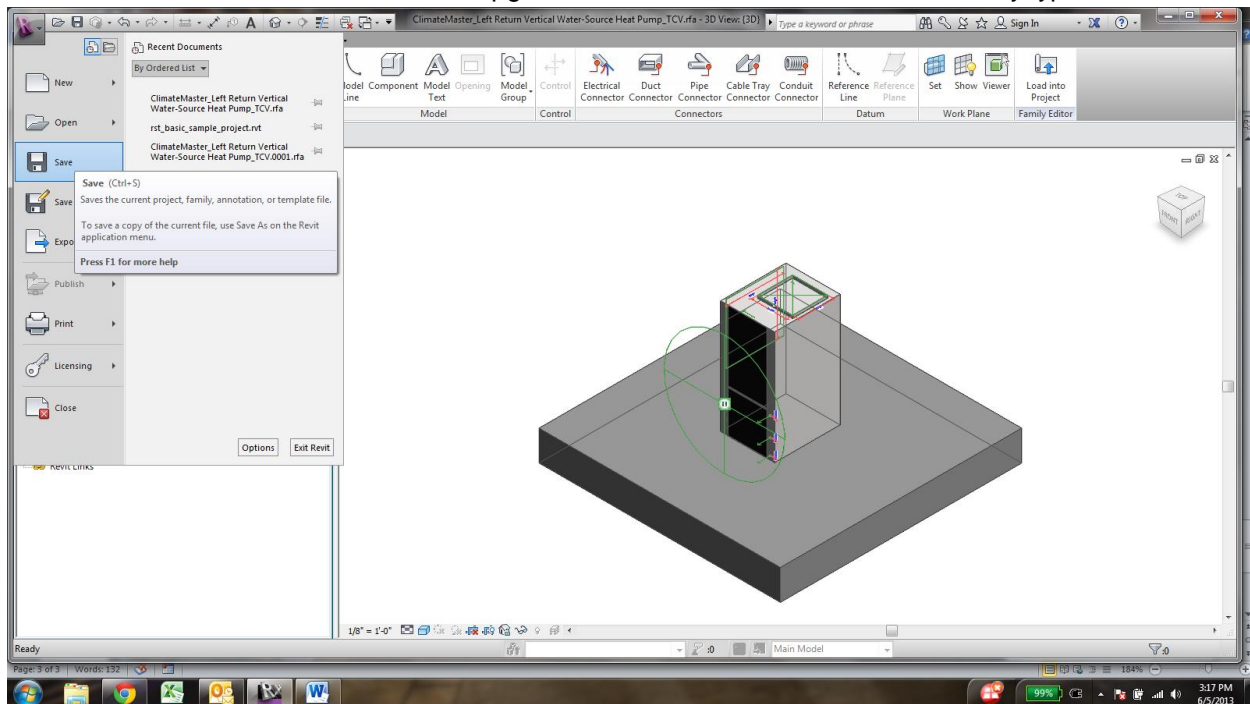
4. To verify which family types are loaded, select Family Types from the create Ribbon.



- Expand the Name field from the dialog box to select the desired type model and press OK.



- Save the ClimateMaster Revit model to upgrade the version with the associated family types.



Your models should now be upgraded to your current version of Revit.