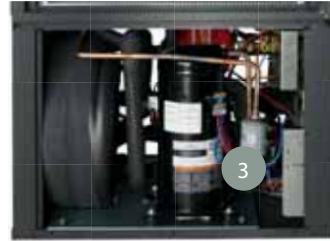
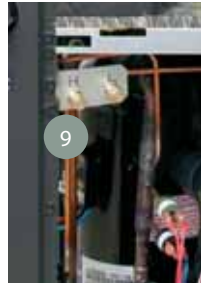


TRANQUILITY® 22 TWO-STAGE DIGITAL (TZ) SERIES

The Tranquility® 22 Two-Stage Digital (TZ) Series is a new, game-changing geothermal heat pump. Intelligently driven by iGate™, the industry's first two-way communicating control, the Tranquility® 22 has a two-stage compressor, variable-speed fan and vFlow™, the industry's first internal variable water flow components. Available at a breakthrough price point, this innovative product line is designed for space limited, new home construction and replacement/retrofit applications. The Tranquility® 22 Two-Stage Digital Series geothermal heat pumps meet ENERGY STAR® Tier 3 efficiency levels.



vFlow
Variable Water Flow

iGate
monitor. control. diagnose.

Features

- 1 Exclusive iGate™ uses the power of 2-way communication to monitor, control and diagnose your system. It improves system life by monitoring and protecting the unit and delivers high efficiency by intelligently controlling the unit.
- 2 Optional vFlow™ variable water flow with variable-speed internal flow center or internal modulating valve for optimized efficiency, reliability and quicker, easier, cleaner installation
- 3 Next generation Copeland™ Ultra-Tech™ Two-Stage Scroll Compressor with dual-level isolation for ultra-quiet and high-efficiency operation
- 4 Emerson UltraTech® variable-speed communicating fan motor with Soft Start and constant CFM control
- 5 Tin-Plated copper air coils to resist formicary corrosion

- 6 Foil-faced insulation in the blower section and fully insulated compressor section conform to ASHRAE 62 specifications
- 7 One inch MERV 8 filter with access frame designed for low-leakage duct connection
- 8 Two-section swing-out control box design provides wide-open service access
- 9 Refrigerant schrader ports located on bracket at the front access panel
- 10 Water schrader ports on corner post to read pressure drop across water heat exchanger
- 11 Small cabinet footprint
- 12 Heavy gauge galvanized steel cabinet is epoxy powder-coated in a durable and attractive bond silver finish
- 13 Designed with external P-trap to eliminate internal drain-line cleanouts

Application Flexibility

- Six capacities 024, 030, 036, 042, 048, and 060
- Entering water temperature operation range 20–120°F
- iGate™—monitor, control and diagnose digitally from the thermostat
- vFlow™—connect geo source directly to the loop
- Ground loop, ground water and water loop applications
- Optional Warranty—extend labor allowance from the standard 5 years to 10 years



CLIMATEMASTER® GEOTHERMAL HEATING AND COOLING

DECLARE YOUR PERSONAL ENERGY INDEPENDENCE

Tranquility® 22 Digital (TZ)

Performance and Specifications

Tranquility® TZ ISO Ratings

AHRI/ISO/ASHRAE 13256-1 Data (English (IP) Units)

Model	Capacity Modulation	Water Loop Heat Pump				Ground Water Heat Pump				Ground Loop Heat Pump			
		Cooling 86°F		Heating 68°F		Cooling 59°F		Heating 50°F		Cooling Full Load 77°F Part Load 68°F		Heating Full Load 32°F Part Load 41°F	
		Capacity Btuh	EER Btuh/W	Capacity Btuh	COP	Capacity Btuh	EER Btuh/W	Capacity Btuh	COP	Capacity Btuh	EER Btuh/W	Capacity Btuh	COP
024	Part	18,100	16.1	20,600	5.2	20,300	27.2	16,700	4.4	19,400	22.2	14,700	4.0
	Full	23,700	14.3	28,000	4.6	26,500	21.7	23,000	4.1	24,600	16.0	17,800	3.6
030	Part	21,900	15.2	26,300	5.0	24,900	24.8	22,000	4.3	24,200	20.9	19,400	3.9
	Full	28,500	14.0	35,800	4.6	32,300	20.7	30,000	4.2	29,900	15.7	23,800	3.6
036	Part	25,800	17.2	29,900	5.3	29,000	29.4	24,900	4.6	27,300	23.4	21,500	4.0
	Full	34,300	15.1	42,000	4.6	38,200	22.3	35,100	4.3	35,200	16.7	27,300	3.6
042	Part	31,000	15.8	36,800	5.1	35,200	26.4	30,500	4.3	34,000	22.0	26,900	3.8
	Full	41,100	14.3	50,200	4.6	46,300	21.3	42,300	4.1	43,100	16.1	33,300	3.4
048	Part	34,100	15.2	39,500	5.5	39,200	26.8	32,600	4.6	37,600	21.2	29,200	4.1
	Full	45,900	14.0	53,800	4.9	51,800	20.9	45,000	4.4	48,150	15.5	35,600	3.7
060	Part	45,500	17.7	49,000	5.3	50,400	28.9	39,800	4.5	48,600	23.7	34,800	4.0
	Full	61,700	15.7	67,500	4.8	68,000	22.7	55,400	4.3	63,200	17.3	43,700	3.6

Ground Loop Heat Pump ratings based on 15% methanol antifreeze solution
All ratings based upon operation at lower voltage of dual voltage rated models

Dimensional Data

Horizontal Model		Overall Cabinet		
		A Width	B Depth	C Height
024-030	in	22.5	48.3	18.2
	cm	57.1	122.9	46.2
036-042	in	22.5	53.3	21.2
	cm	57.1	135.4	53.8
048-060	in	25.4	68.0	21.2
	cm	64.5	172.7	53.8

Vertical Upflow Model		Overall Cabinet		
		A Width	B Depth	C Height
024-030	in	22.4	22.4	40.5
	cm	56.9	56.9	102.9
036-042	in	22.4	26.0	46.5
	cm	56.9	66.0	118.1
048-060	in	25.4	29.3	50.5
	cm	64.5	74.4	128.3



7300 S.W. 44th Street
Oklahoma City, OK 73179
Phone: 405-745-6000
Fax: 405-745-6058
climatemaster.com | cmdealernet.com



ClimateMaster works continually to improve its products. As a result, the design and specifications of each product at the time for order may be changed without notice and may not be as described herein. For specific information on the current design and specifications go to cmdealernet.com. Statements and other information contained herein are not express warranties and do not form the basis of any bargain between the parties, but are merely ClimateMaster's opinion or commendation of its products.

Engineered and Assembled in the USA