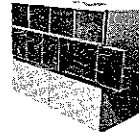


VARI-MASTER SERIES VARIABLE/CONSTANT AIR VOLUME WATER SOURCE HEAT PUMP SIZE: 903 480N



ClimateMaster
A SUBSIDIARY OF YORK INTERNATIONAL, INC.
CLIMATE MASTER, INC.

TAG: _____

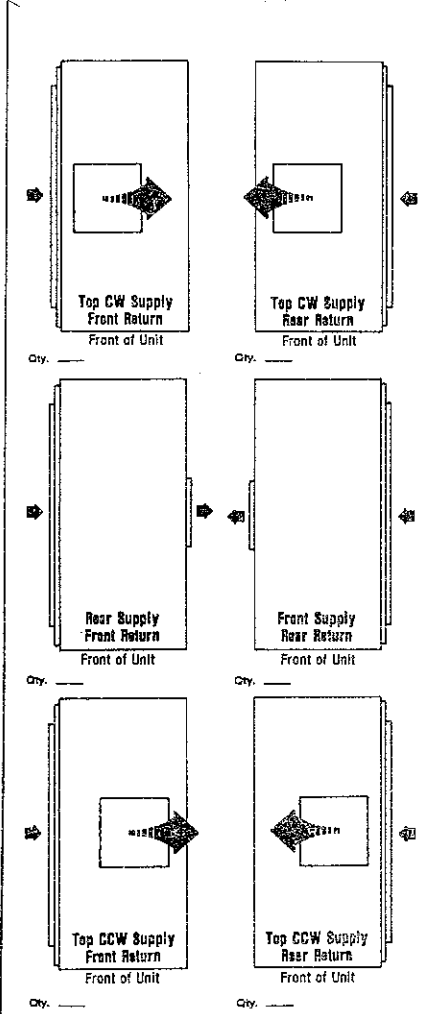
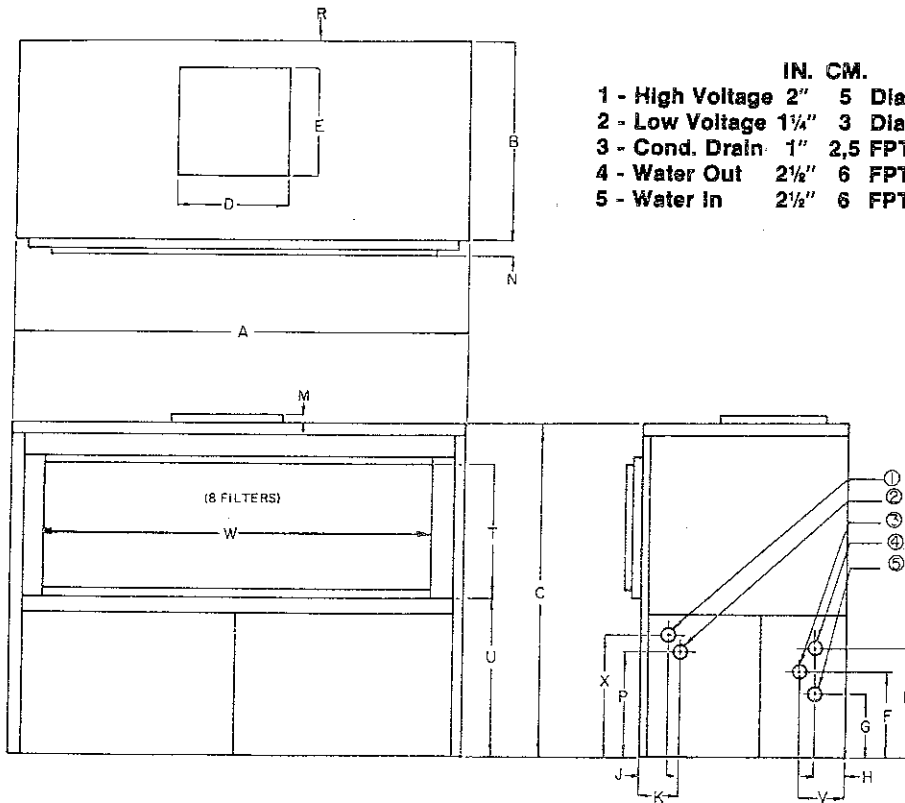
JOB SCHEDULE	TOTAL BTUH	INPUT WATTS	SENSIBLE BTUH	BTUH HEAT OF ABS./REJ.	EER COP	GPM	EWT	LWT	EAT	PRESSURE DROP IN FEET
COOLING										
HEATING										

ELECTRICAL DATA		BLOWER	COMPRESSOR		MIN CKT AMPACITY	MAX, FUSE OR HACR SIZE
VOLTAGE	PHASE	HP/FLA	RLA	LRA		
575	3	7.5/8.5	52	225	74	125
575	3	10.0/10.4	52	225	75	125
575	3	15.0/16.0	52	225	81	125
575	3	20.0/20.0	52	225	85	125
575	3	25.0/25.0	52	225	90	125

BLOWER PERFORMANCE			INSTALLED WEIGHT		
EXT. STATIC PRES. I.W.G.			lbs.		
CFM			kg.		

DIMENSIONS

AIR FLOW PATTERNS

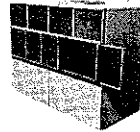


SZ.	A	B	C	D	E	F	G	H	J	K	L
IN.	105 1/2	46 1/4	77 3/4	25 3/4	25 1/4	12 1/16	9 1/16	8 13/16	5 3/4	7 3/4	17 1/4
CM.	268	117	197	64	64	31	24	22	15	20	44

SZ.	M	N	P	R	S	T	U	V	W	X	Y
IN.	1 1/2	6	20	12 5/16	42 1/16	43 3/4	33	11 3/4	96 1/2	24 1/2	7 1/16
CM.	4	17	51	31	109	110	84	30	245	62	19

FILTER SIZE	20" x 25" 51 x 63.5 cm.	SHIPPING WGT.	2600 lbs. 1170 kg.
-------------	----------------------------	---------------	-----------------------

VARI-MASTER SERIES VARIABLE/CONSTANT AIR VOLUME WATER SOURCE HEAT PUMP SIZE: 903 480F



ClimateMaster
A COMBINATION OF CHP CORP. AND
FRIEDRICH™ CLIMATE MASTER, INC.

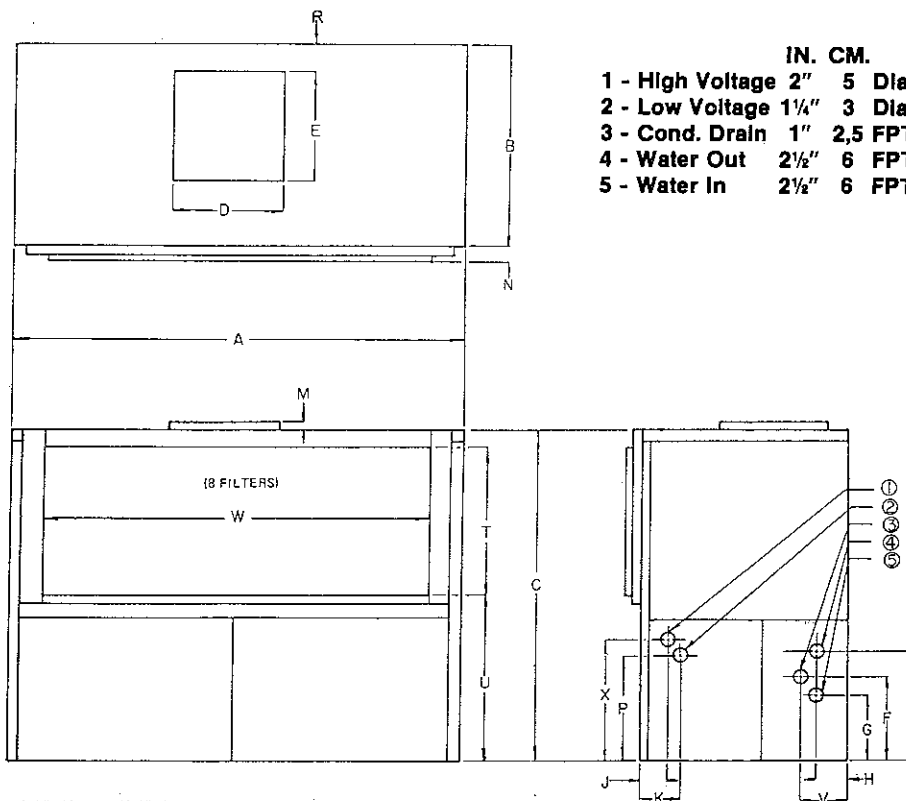
TAG: _____

JOB SCHEDULE	TOTAL BTUH	INPUT WATTS	SENSIBLE BTUH	BTUH HEAT OF ABS./REJ.	EER COP	GPM	EWT	LWT	EAT	PRESSURE DROP IN FEET
COOLING										
HEATING										

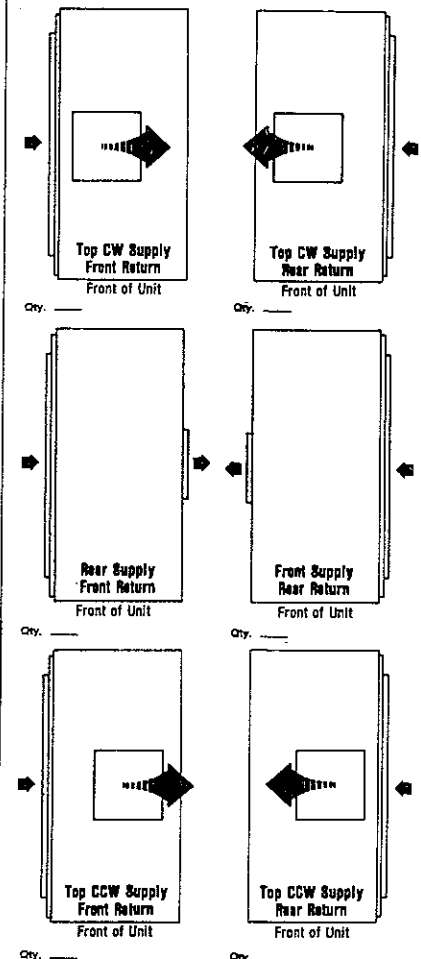
ELECTRICAL DATA		BLOWER	COMPRESSOR		MIN CKT AMPACITY	MAX, FUSE OR HACR SIZE
VOLTAGE	PHASE	HP/FLA	RLA	LRA		
460	3	7.5/10.5	65	297	92	150
460	3	10.0/12.5	65	297	94	150
460	3	15.0/20	65	297	101	150
460	3	20.0/25	65	297	106	150
460	3	25.0/31.5	65	297	113	175

BLOWER PERFORMANCE			INSTALLED WEIGHT		
EXT. STATIC PRES. I.W.G.			lbs.		
CFM			kg.		

DIMENSIONS



AIR FLOW PATTERNS



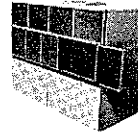
SZ.	A	B	C	D	E	F	G	H	J	K	L
IN.	105 1/2	48 1/4	77 3/4	25 1/4	25 1/4	12 1/16	9 1/16	8 1/16	5 3/4	7 3/4	17 1/4
CM.	268	117	197	64	64	31	24	22	15	20	44

SZ.	M	N	P	R	S	T	U	V	W	X	Y
IN.	1 1/4	6 3/4	20	12 3/16	42 15/16	43 3/4	33	11 3/4	96 1/2	24 1/2	7 7/16
CM.	4	17	51	31	109	110	84	30	245	62	19

FILTER SIZE **20"x25"** SHIPPING WGT. **2600 lbs.**
51x63,5 cm. **1170 kg.**

Continuing engineering research results in steady improvements. Therefore, these ratings and specifications are subject to change without notice. No one is authorized to reproduce or alter this document in any way without the written authorization of an officer of the company.

VARI-MASTER SERIES VARIABLE/CONSTANT AIR VOLUME WATER SOURCE HEAT PUMP SIZE: 803 480N



ClimateMaster
A COMBINATION OF CHP CORP AND
FRIEDRICH™ CLIMATE MASTER, INC.

TAG: _____

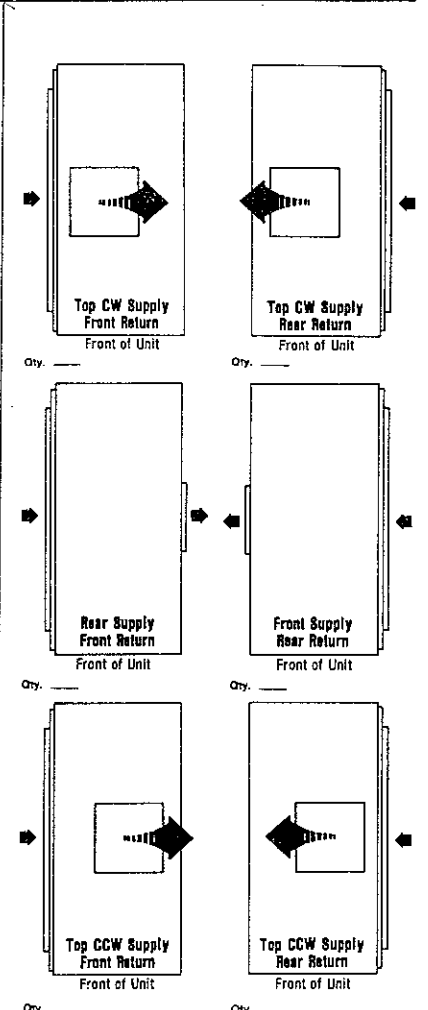
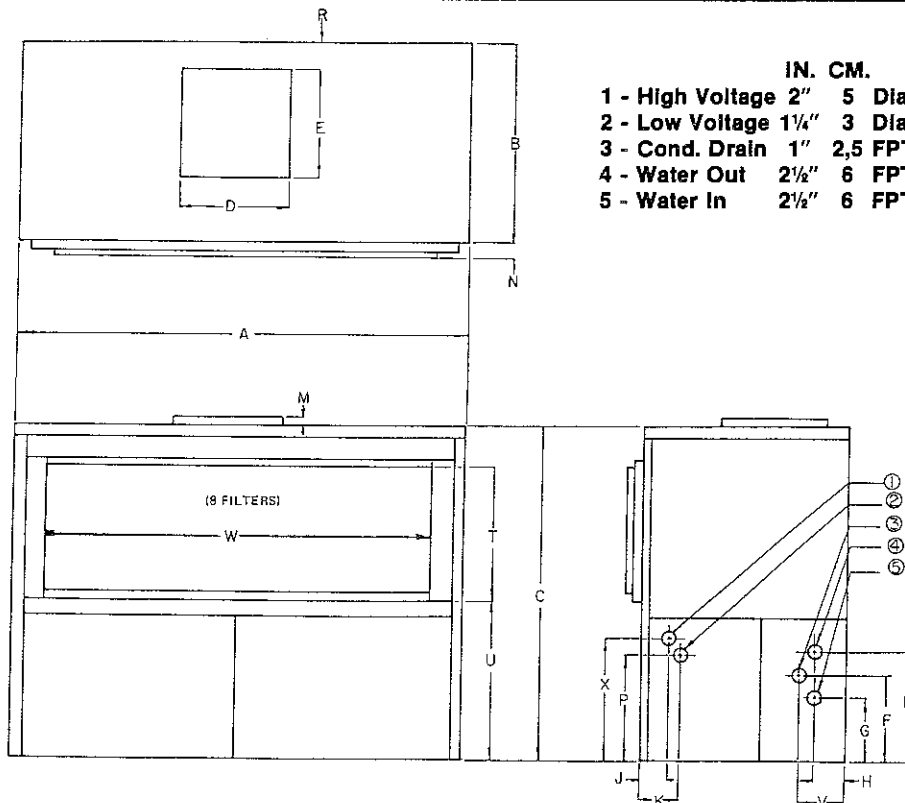
JOB SCHEDULE	TOTAL BTUH	INPUT WATTS	SENSIBLE BTUH	BTUH HEAT OF ABS./REJ.	EER COP	GPM	EWT	LWT	EAT	PRESSURE DROP IN FEET
COOLING										
HEATING										

ELECTRICAL DATA		BLOWER	COMPRESSOR		MIN CKT AMPACITY	MAX. FUSE OR HACR SIZE
VOLTAGE	PHASE	HP/FLA	RLA	LRA		
575	3	7.5/8.5	52	225	74	125
575	3	10.0/10.4	52	225	75	125
575	3	15.0/16.0	52	225	81	125
575	3	20.0/20.0	52	225	85	125
575	3	25.0/25.0	52	225	90	125

BLOWER PERFORMANCE			INSTALLED WEIGHT		
EXT. STATIC PRES. I.W.G.			lbs.		
CFM			kg.		

DIMENSIONS

AIR FLOW PATTERNS



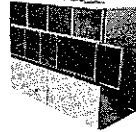
SZ.	A	B	C	D	E	F	G	H	J	K	L
IN.	105 1/2	46 1/4	77 3/4	25 1/4	25 1/4	17 1/4	11 3/4	5 1/2	5 3/4	7 3/4	22 1/16
CM.	268	117	197	64	64	44	29	14	15	20	58

SZ.	M	N	P	R	S	T	U	V	W	X	Y
IN.	1 1/2	6 3/4	20	12 5/16	42 15/16	43 3/4	33	8 13/16	96 1/2	24 1/2	
CM.	4	17	51	31	109	110	84	22	245	62	

FILTER SIZE **20" x 25"** SHIPPING WGT. **3000 lbs.**
51 x 63.5 cm. **1350 kg.**

Continuing engineering research results in steady improvements. Therefore, these ratings and specifications are subject to change without notice. No one is authorized to reproduce or alter this document in any way without the written authorization of an officer of the company.

VARI-MASTER SERIES VARIABLE/CONSTANT AIR VOLUME WATER SOURCE HEAT PUMP SIZE: 803 480F



ClimateMaster
A COMBINATION OF CHP CORP. AND
FRIEDRICH™ CLIMATE MASTER, INC.

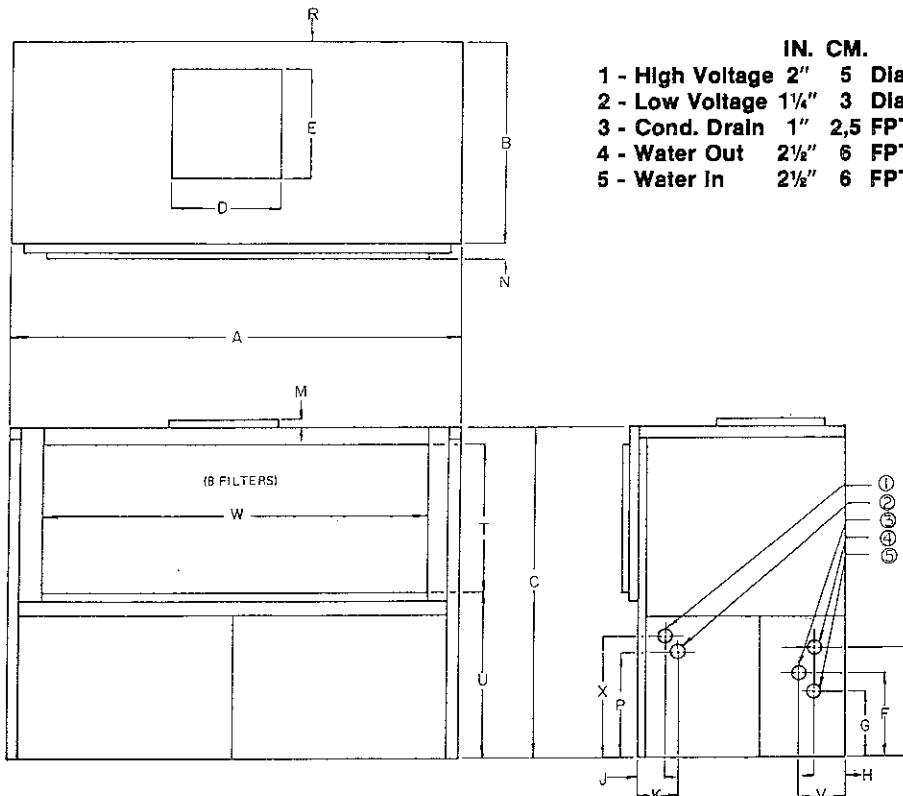
TAG: _____

JOB SCHEDULE	TOTAL BTUH	INPUT WATTS	SENSIBLE BTUH	BTUH HEAT OF ABS./REJ.	EER COP	GPM	EWT	LWT	EAT	PRESSURE DROP IN FEET
COOLING										
HEATING										

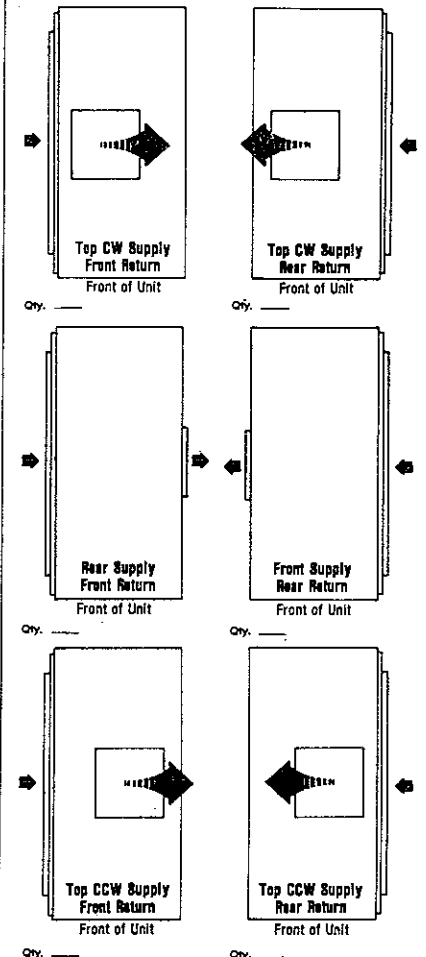
ELECTRICAL DATA		BLOWER	COMPRESSOR		MIN CKT AMPACITY	MAX, FUSE OR HACR SIZE
VOLTAGE	PHASE	HP/FLA	RLA	LRA		
460	3	7.5/10.5	65	297	92	150
460	3	10.0/12.5	65	297	94	150
460	3	15.0/.20	65	297	101	150
460	3	20.0/25	65	297	106	150
460	3	25.0/31.5	65	297	113	175

BLOWER PERFORMANCE			INSTALLED WEIGHT	
EXT. STATIC PRES. I.W.G.			lbs.	
CFM			kg.	

DIMENSIONS



AIR FLOW PATTERNS



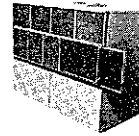
SZ.	A	B	C	D	E	F	G	H	J	K	L
IN.	105 1/2	46 1/4	77 3/4	25 1/4	25 1/4	17 1/4	11 3/4	5 11/16	5 3/4	7 1/4	22 11/16
CM.	268	117	197	64	64	44	29	14	15	20	58

SZ.	M	N	P	R	S	T	U	V	W	X	Y
IN.	1 1/2	6 3/4	20	12 3/16	42 15/16	43 3/4	33	8 11/16	96 1/2	24 1/2	
CM.	4	17	51	31	109	110	84	22	245	62	

FILTER SIZE 20"x25" SHIPPING WGT. 3000 lbs.
51x63,5 cm. 1350 kg.

Continuing engineering research results in steady improvements. Therefore, these ratings and specifications are subject to change without notice. No one is authorized to reproduce or alter this document in any way without the written authorization of an officer of the company.

VARI-MASTER SERIES VARIABLE/CONSTANT AIR VOLUME WATER SOURCE HEAT PUMP SIZE: 903 360N



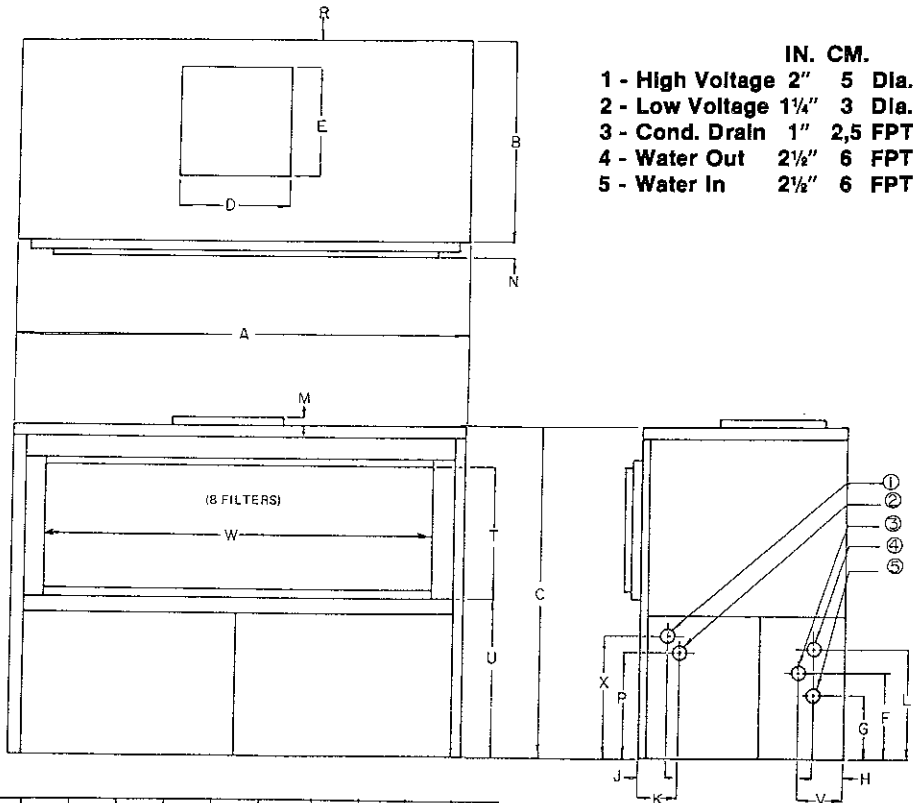
TAG: _____

JOB SCHEDULE	TOTAL BTUH	INPUT WATTS	SENSIBLE BTUH	BTUH HEAT OF ABS./REJ.	EER COP	GPM	EWT	LWT	EAT	PRESSURE DROP IN FEET
COOLING										
HEATING										

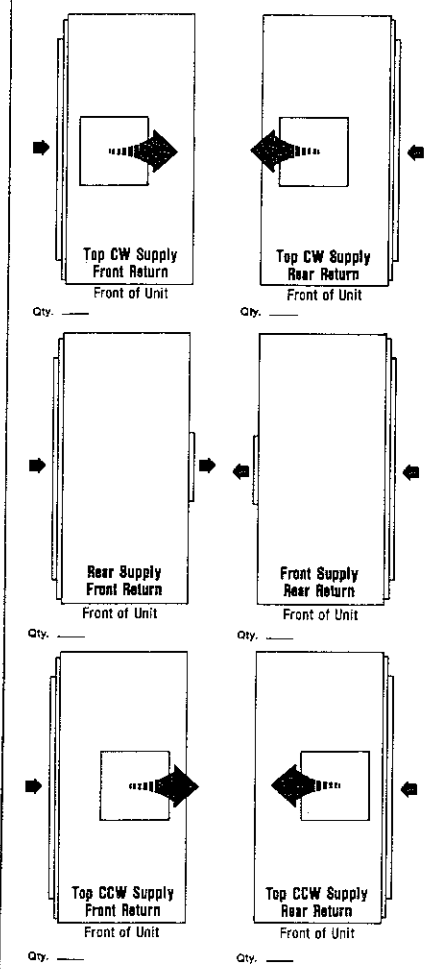
ELECTRICAL DATA		BLOWER	COMPRESSOR		MIN CKT AMPACITY	MAX. FUSE OR HACR SIZE
VOLTAGE	PHASE	HP/FLA	RLA	LRA		
575	3	7.5	48.0	230.0	69	110
575	3	10.0	48.0	230.0	70	110
575	3	15.0	48.0	230.0	76	110
575	3	20.0	48.0	230.0	80	125
575	3	25.0	48.0	230.0	85	125

BLOWER PERFORMANCE			INSTALLED WEIGHT		
EXT. STATIC PRES. I.W.G.				lbs.	
CFM				kg.	

DIMENSIONS



AIR FLOW PATTERNS



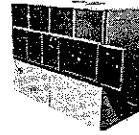
SZ.	A	B	C	D	E	F	G	H	J	K	L
IN.	105 1/2	46 1/4	77 3/4	20 1/4	25 1/4	12 1/16	9 9/16	8 11/16	5 3/4	7 3/4	17 1/4
CM.	268	117	197	51	64	31	24	22	15	20	44

SZ.	M	N	P	R	S	T	U	V	W	X	Y
IN.	1 1/2	8 3/4	20	12 3/16	42 3/4	38 3/4	33	11 3/4	96 1/2	24 1/2	7 7/16
CM.	4	17	51	31	108	97	84	30	245	62	19

FILTER SIZE **20"x25"** SHIPPING WGT. **2200 lbs.**
51x63,5 cm. **990 kg.**

Continuing engineering research results in steady improvements. Therefore, these ratings and specifications are subject to change without notice. No one is authorized to reproduce or alter this document in any way without the written authorization of an officer of the company.

**VARI-MASTER SERIES
VARIABLE/CONSTANT AIR VOLUME
WATER SOURCE HEAT PUMP
SIZE: 903 360F**



ClimateMaster
A COMBINATION OF CHP CORP AND
FRIEDRICH™ CLIMATE MASTER, INC.

TAG: _____

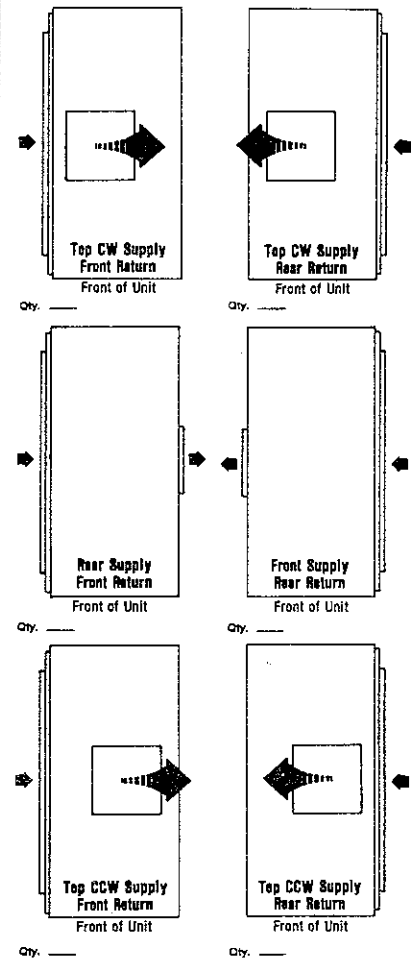
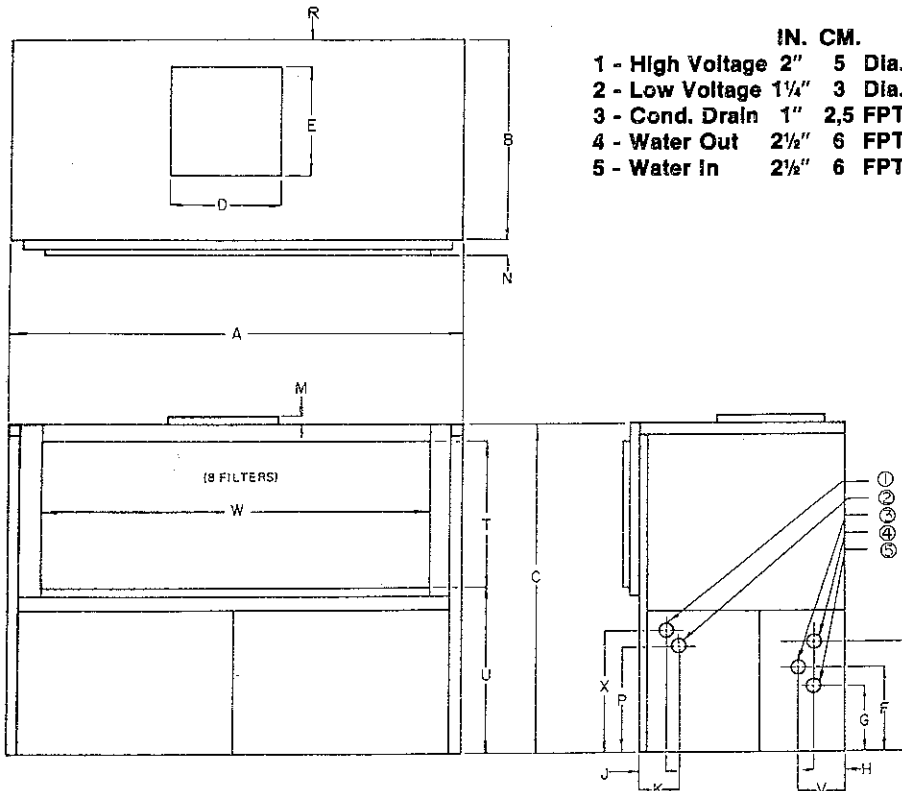
JOB SCHEDULE	TOTAL BTUH	INPUT WATTS	SENSIBLE BTUH	BTUH HEAT OF ABS./REJ.	EER COP	GPM	EWT	LWT	EAT	PRESSURE DROP IN FEET
COOLING										
HEATING										

ELECTRICAL DATA		BLOWER	COMPRESSOR		MIN CKT AMPACITY	MAX. FUSE OR HACR SIZE
VOLTAGE	PHASE	HP/FLA	RLA	LRA		
460	3	7.5/10.5	60	283	86	125
460	3	10/12.5	60	283	88	125
460	3	15/20	60	283	95	150
460	3	20/25	60	283	100	150
460	3	25/31.5	60	283	107	150

BLOWER PERFORMANCE			INSTALLED WEIGHT		
EXT. STATIC PRES. I.W.G.			lbs.		
CFM			kg.		

DIMENSIONS

AIR FLOW PATTERNS



SZ.	A	B	C	D	E	F	G	H	J	K	L
IN.	105 1/2	46 1/4	77 3/4	20 3/4	12 1/16	9 9/16	8 11/16	5 1/2	7 1/4	17 3/4	
CM.	268	117	197	51	64	31	24	22	15	20	44

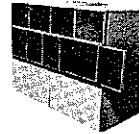
SZ.	M	N	P	R	S	T	U	V	W	X	Y
IN.	1 1/2	6 3/4	20	12 5/16	42 3/4	38 1/4	33	11 3/4	96 1/2	24 1/2	7 7/16
CM.	4	17	51	31	108	97	84	30	245	62	19

FILTER SIZE **20" x 25"**
51x63,5 cm.

SHIPPING WGT. **2200 lbs.**
990 kg.

Continuing engineering research results in steady improvements. Therefore, these ratings and specifications are subject to change without notice. No one is authorized to reproduce or alter this document in any way without the written authorization of an officer of the company.

**VARI-MASTER SERIES
VARIABLE/CONSTANT AIR VOLUME
WATER SOURCE HEAT PUMP
SIZE: 803 360N**



ClimateMaster
A COMBINATION OF CHP CORP. AND
FRIEDRICH™ CLIMATE MASTER, INC.

TAG: _____

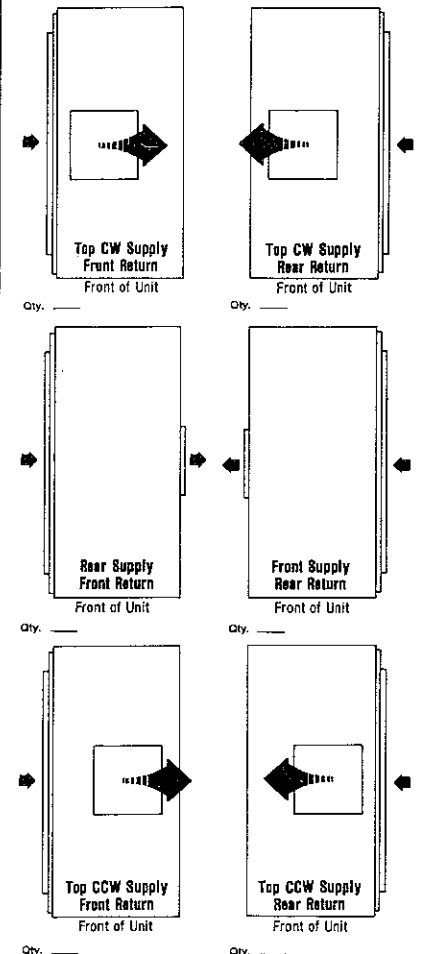
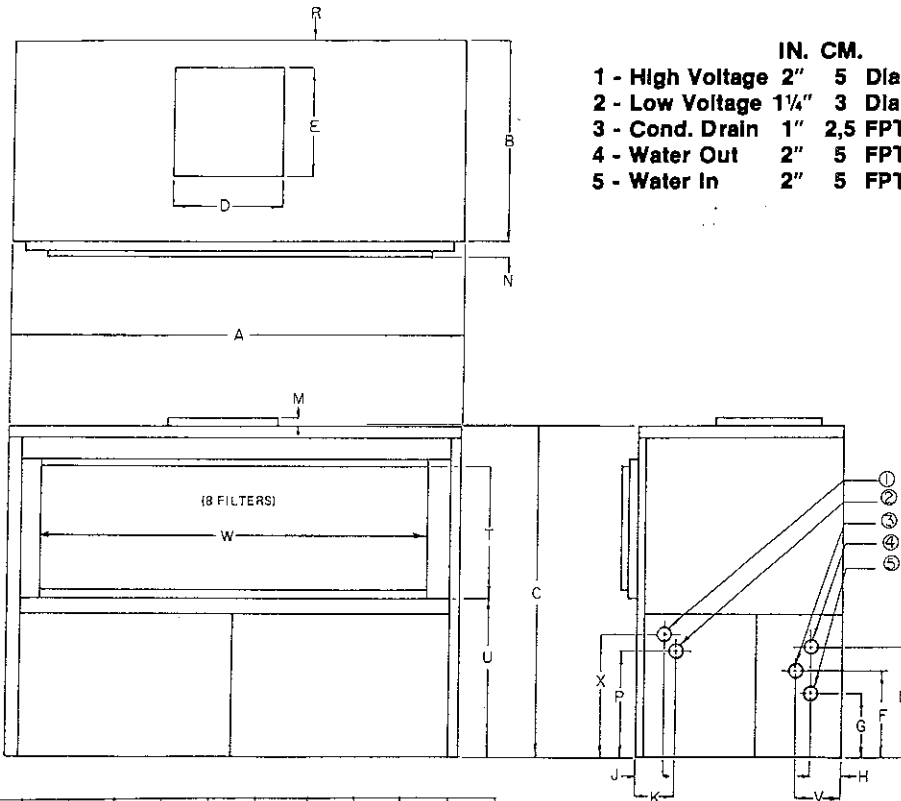
JOB SCHEDULE	TOTAL BTUH	INPUT WATTS	SENSIBLE BTUH	BTUH HEAT OF ABS./REJ.	EER COP	GPM	EWT	LWT	EAT	PRESSURE DROP IN FEET
COOLING										
HEATING										

ELECTRICAL DATA		BLOWER	COMPRESSOR		MIN CKT AMPACITY	MAX, FUSE OR HACR SIZE
VOLTAGE	PHASE	HP/FLA	RLA	LRA		
575	3	7.5	48.0	230.0	69	110
575	3	10.0	48.0	230.0	70	110
575	3	15.0	48.0	230.0	76	110
575	3	20.0	48.0	230.0	80	125
575	3	25.0	48.0	230.0	85	125

BLOWER PERFORMANCE		INSTALLED WEIGHT	
EXT. STATIC PRES. I.W.G.		lbs.	
CFM		kg.	

DIMENSIONS

AIR FLOW PATTERNS



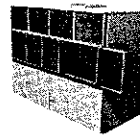
SZ.	A	B	C	D	E	F	G	H	J	K	L
IN.	105 1/2	46 1/4	77 3/4	20 1/4	25 1/4	17 1/4	11 3/4	5 11/16	5 3/4	7 1/4	22 11/16
CM.	268	117	197	51	64	44	29	14	15	20	58

SZ.	M	N	P	R	S	T	U	V	W	X	Y
IN.	1 1/2	6 3/4	20	12 1/16	42 3/4	38 1/4	33	8 11/16	96 1/2	24 1/2	
CM.	4	17	51	31	108	97	84	22	245	62	

FILTER SIZE: **20" x 25"** SHIPPING WGT. **2600 lbs.**
51x63,5 cm. **1170 kg.**

Continuing engineering research results in steady improvements. Therefore, these ratings and specifications are subject to change without notice. No one is authorized to reproduce or alter this document in any way without the written authorization of an officer of the company.

VARI-MASTER SERIES VARIABLE/CONSTANT AIR VOLUME WATER SOURCE HEAT PUMP SIZE: 803 360F

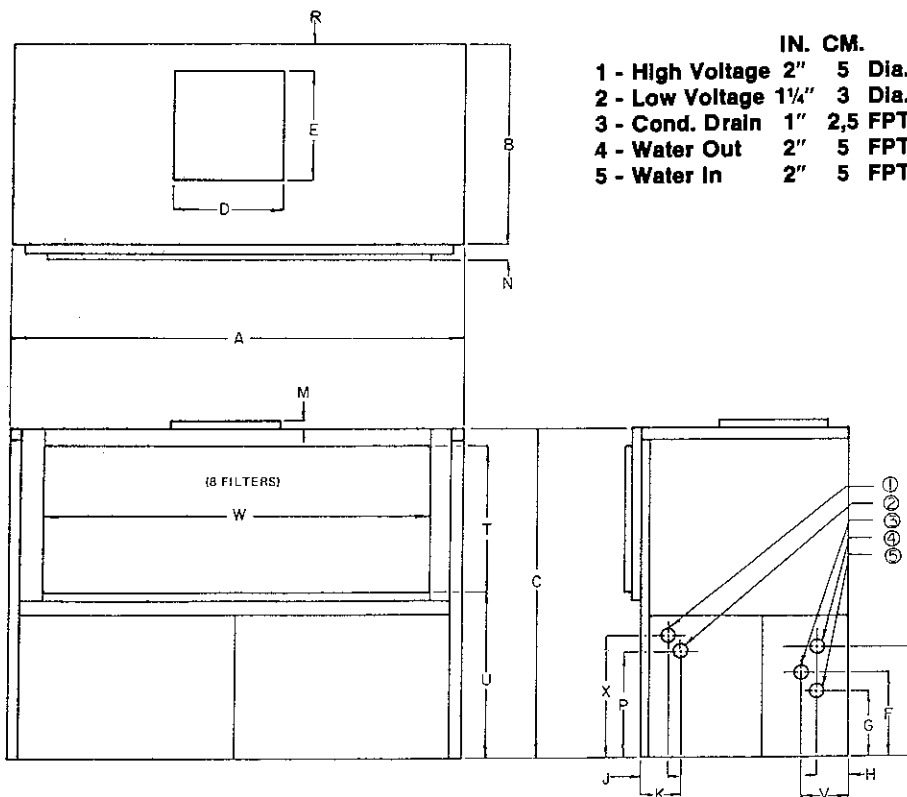


ClimateMaster
A COMBINATION OF CHP CORP. AND
FRIEDRICH™ CLIMATE MASTER, INC.

TAG: _____

JOB SCHEDULE	TOTAL BTUH	INPUT WATTS	SENSIBLE BTUH	BTUH HEAT OF ABS./REJ.	EER COP	GPM	EWT	LWT	EAT	PRESSURE DROP IN FEET
COOLING										
HEATING										
ELECTRICAL DATA		BLOWER		COMPRESSOR		MIN CKT AMPACITY		MAX. FUSE OR HACR SIZE		
VOLTAGE	PHASE	HP/FLA	RLA	LRA						
460	3	7.5/10.5	60	283			86			125
460	3	10/12.5	60	283			88			125
460	3	15/20	60	283			95			150
460	3	20/25	60	283			100			150
460	3	25/31.5	60	283			107			150
BLOWER PERFORMANCE						INSTALLED WEIGHT				
EXT. STATIC PRES. I.W.G.						lbs.				
CFM						kg.				

DIMENSIONS



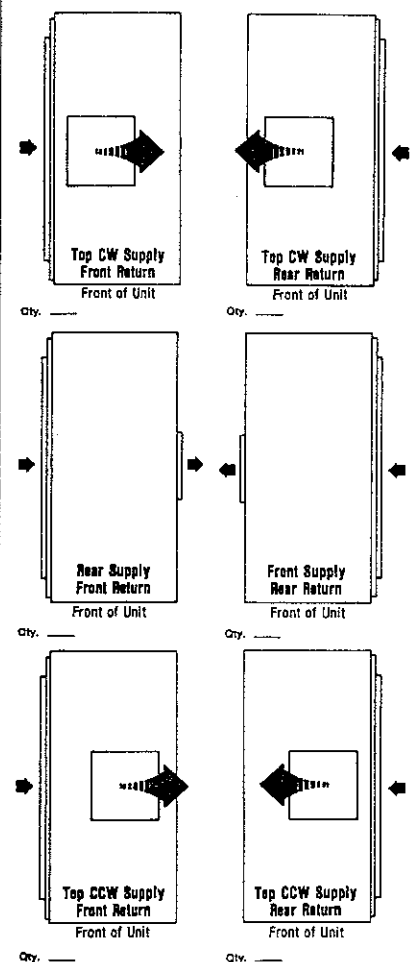
SZ.	A	B	C	D	E	F	G	H	J	K	L
IN.	105 1/2	46 3/4	77 3/4	20 3/4	25 1/4	17 1/4	11 3/4	5 1/4	5 1/4	7 3/4	22 1/4
CM.	268	117	197	51	64	44	29	14	15	20	58

SZ.	M	N	P	R	S	T	U	V	W	X	Y
IN.	1 1/2	6 3/4	20	12 3/4	42 3/4	38 3/4	33	8 1/4	96 1/2	24 1/2	
CM.	4	17	51	31	108	97	84	22	245	62	

FILTER SIZE **20"x25"**
51x63,5 cm.

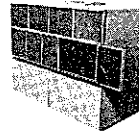
SHIPPING WGT. **2600 lbs.**
1170 kg.

AIR FLOW PATTERNS



Continuing engineering research results in steady improvements. Therefore, these ratings and specifications are subject to change without notice. No one is authorized to reproduce or alter this document in any way without the written authorization of an officer of the company.

**VARI-MASTER SERIES
VARIABLE/CONSTANT AIR VOLUME
WATER SOURCE HEAT PUMP
SIZE: 903 300N**



TAG: _____

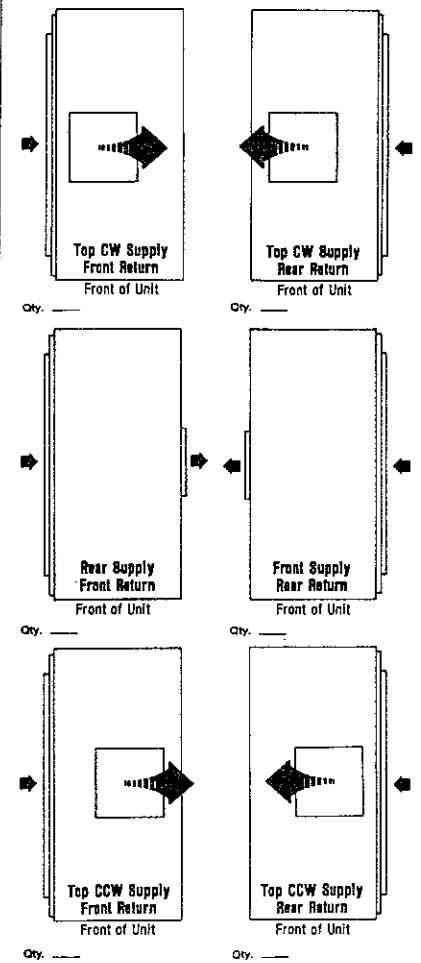
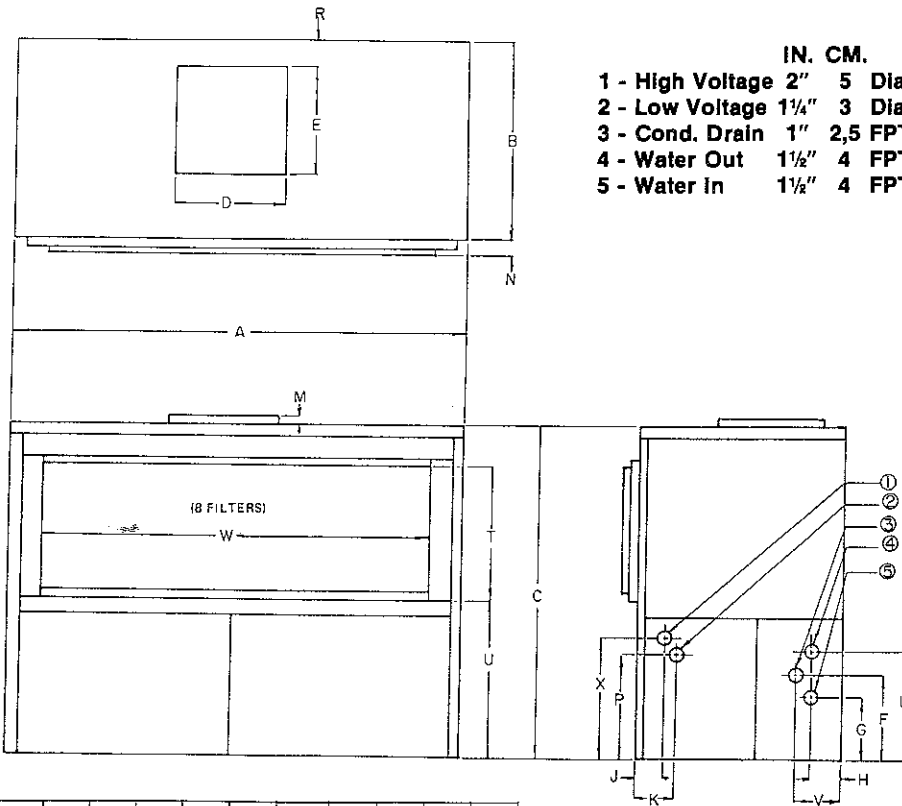
JOB SCHEDULE	TOTAL BTUH	INPUT WATTS	SENSIBLE BTUH	BTUH HEAT OF ABS./REJ.	EER COP	GPM	EWT	LWT	EAT	PRESSURE DROP IN FEET
COOLING										
HEATING										

ELECTRICAL DATA		BLOWER	COMPRESSOR		MIN CKT AMPACITY	MAX, FUSE OR HACR SIZE
VOLTAGE	PHASE	HP/FLA	RLA	LRA		
575	3	5/5.9	32	160	46	70
575	3	7.5/8.5	32	160	49	80
575	3	10.0/10.4	32	160	50	80
575	3	15/16	32	160	56	80
575	3	20/20	32	160	60	90

BLOWER PERFORMANCE			INSTALLED WEIGHT	
EXT. STATIC PRES. I.W.G.			lbs.	
CFM			kg.	

DIMENSIONS

AIR FLOW PATTERNS

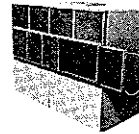


SZ.	A	B	C	D	E	F	G	H	J	K	L
IN.	105 1/2	46 3/4	77 3/8	20 1/4	25 1/4	9 13/16		8 13/16	5 1/4	7 1/4	17 1/4
CM.	268	117	197	51	64	25		22	15	20	44

SZ.	M	N	P	R	S	T	U	V	W	X	Y
IN.	1 1/2	6 1/8	20	12 1/16	42 3/8	38 1/4	33	10 1/16	96 1/2	24 1/2	6 11/16
CM.	4	17	51	31	108	97	84	27	245	62	17

FILTER SIZE **20" x 25"** SHIPPING WGT. **2400 lbs.**
51 x 63.5 cm. **1080 kg.**

VARI-MASTER SERIES VARIABLE/CONSTANT AIR VOLUME WATER SOURCE HEAT PUMP SIZE: 903 300F



ClimateMaster

A COMBINATION OF CHP CORP. AND
FRIEDRICH™ CLIMATE MASTER, INC.

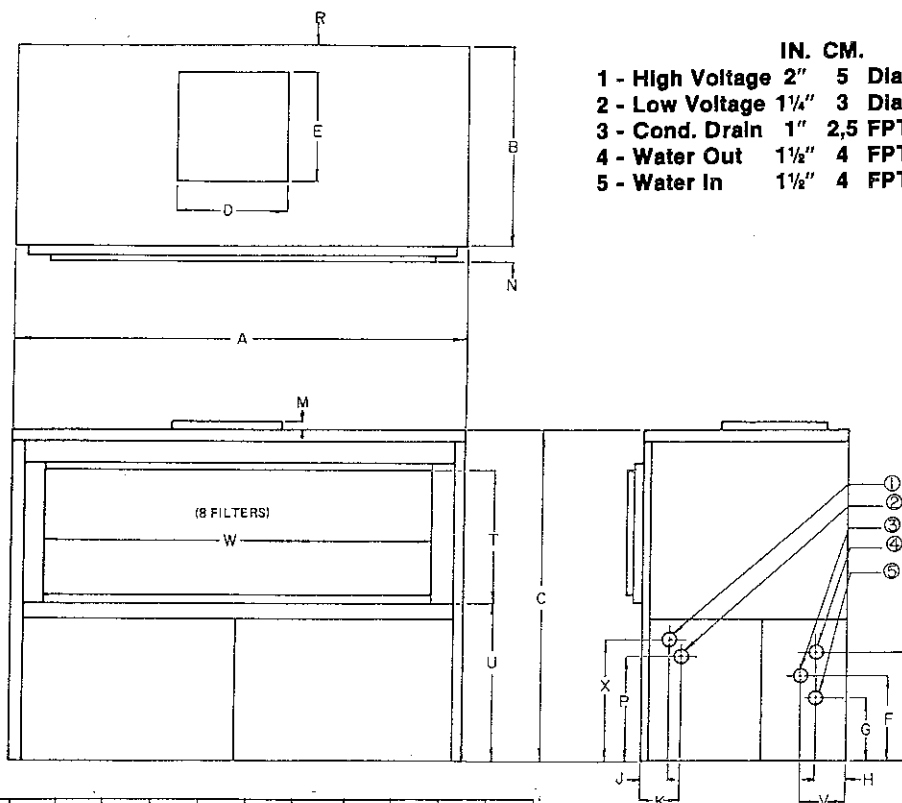
TAG: _____

JOB SCHEDULE	TOTAL BTUH	INPUT WATTS	SENSIBLE BTUH	BTUH HEAT OF ABS./REJ.	EER COP	GPM	EWT	LWT	EAT	PRESSURE DROP IN FEET
COOLING										
HEATING										

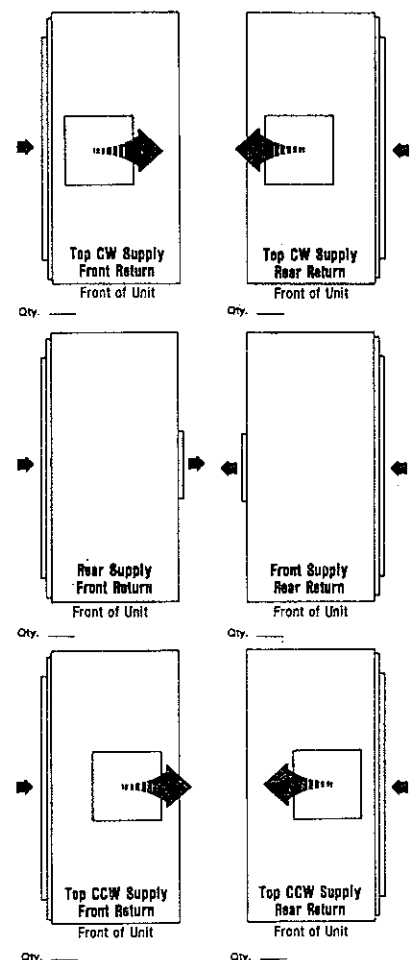
ELECTRICAL DATA		BLOWER	COMPRESSOR		MIN CKT AMPACITY	MAX. FUSE OR HACR SIZE
VOLTAGE	PHASE	HP/FLA	RLA	LRA		
460	3	5/7.3	32	160	57	90
460	3	7.5/10.5	32	160	61	100
460	3	10/12.5	32	160	63	100
460	3	15/20	32	160	70	110
460	3	20/25	32	160	75	110

BLOWER PERFORMANCE			INSTALLED WEIGHT		
EXT. STATIC PRES. I.W.G.			lbs.		
CFM			kg.		

DIMENSIONS



AIR FLOW PATTERNS



SZ.	A	B	C	D	E	F	G	H	J	K	L
IN.	105½	46¼	77¾	20¼	25¼	9 13/16		6 9/16	5¼	7¾	17¼
CM.	268	117	197	51	64	25		22	15	20	44

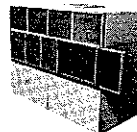
SZ.	M	N	P	R	S	T	U	V	W	X	Y
IN.	1½	6¾	20	12 3/16	42¾	38¼	33	10 7/16	96½	24½	6 1/16
CM.	4	17	51	31	108	97	84	27	245	62	17

FILTER SIZE **20"x25"**
51x63,5 cm.

SHIPPING WGT. **2400 lbs.**
1080 kg.

Continuing engineering research results in steady improvements. Therefore, these ratings and specifications are subject to change without notice.
No one is authorized to reproduce or alter this document in any way without the written authorization of an officer of the company.

VARI-MASTER SERIES VARIABLE/CONSTANT AIR VOLUME WATER SOURCE HEAT PUMP SIZE: 803 300N



ClimateMaster
A COMBINATION OF CHP CORP. AND
FRIEDRICH™ CLIMATE MASTER, INC.

TAG: _____

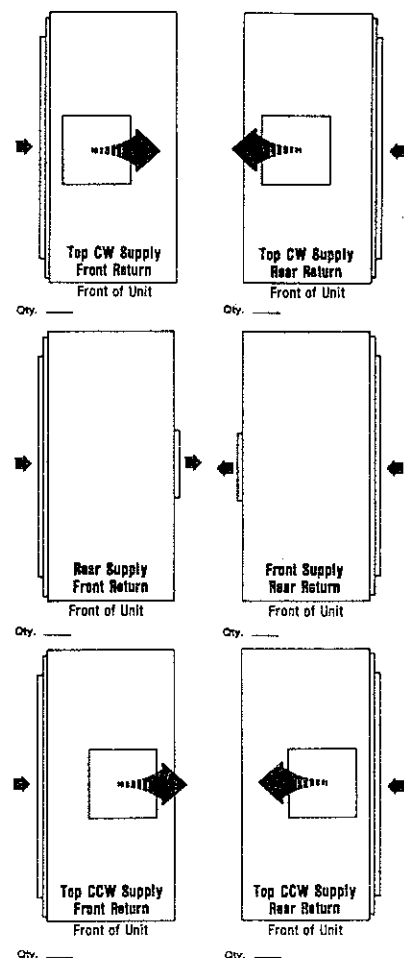
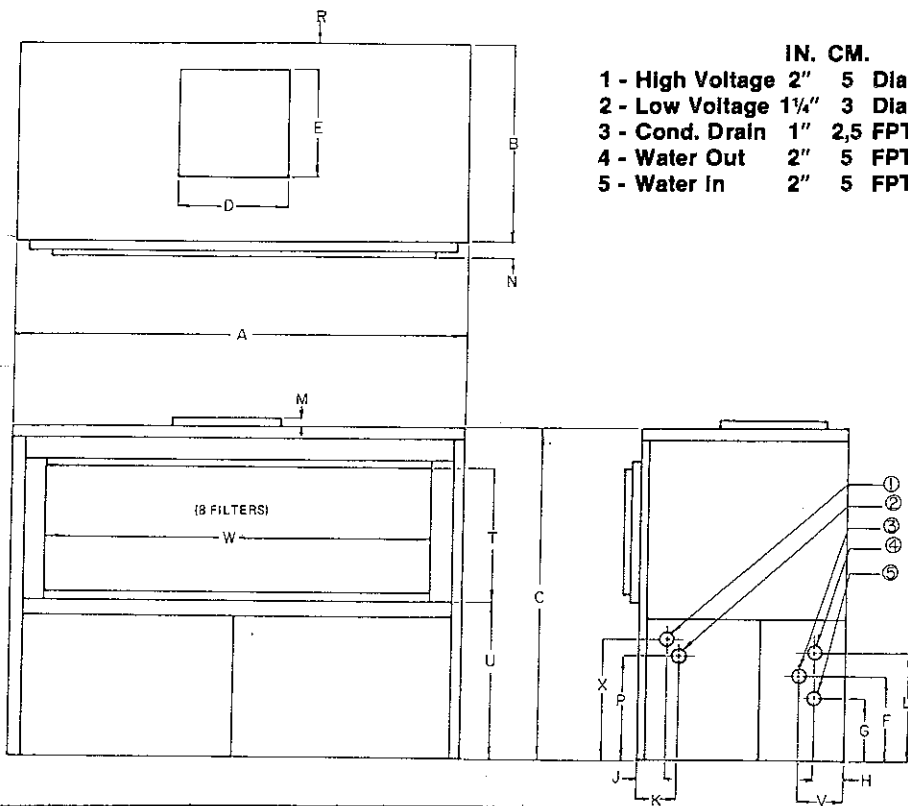
JOB SCHEDULE	TOTAL BTUH	INPUT WATTS	SENSIBLE BTUH	BTUH HEAT OF ABS./REJ.	EER COP	GPM	EWT	LWT	EAT	PRESSURE DROP IN FEET
COOLING										
HEATING										

ELECTRICAL DATA		BLOWER	COMPRESSOR		MIN CKT AMPACITY	MAX, FUSE OR HACR SIZE
VOLTAGE	PHASE	HP/FLA	RLA	LRA		
575	3	5/5.9	32	160	46	70
575	3	7.5/8.5	32	160	49	80
575	3	10.0/10.4	32	160	50	80
575	3	15/16	32	160	56	80
575	3	20/20	32	160	60	90

BLOWER PERFORMANCE			INSTALLED WEIGHT		
EXT. STATIC PRES. I.W.G.			lbs.		
CFM			kg.		

DIMENSIONS

AIR FLOW PATTERNS

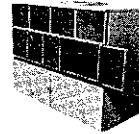


SZ.	A	B	C	D	E	F	G	H	J	K	L
IN.	105 1/2	46 1/4	77 3/4	20 3/4	25 1/4	17 1/4	11 3/4	5 11/16	5 3/4	7 3/4	22 11/16
CM.	268	117	197	51	64	44	29	14	15	20	58

SZ.	M	N	P	R	S	T	U	V	W	X	Y
IN.	1 1/2	6 3/4	20	12 3/16	42 3/4	38 1/4	33	8 11/16	96 1/2	24 1/2	
CM.	4	17	51	31	108	97	84	22	245	62	

FILTER SIZE **20" x 25"** SHIPPING WGT. **2800 lbs.**
51 x 63.5 cm. **1260 kg.**

VARI-MASTER SERIES VARIABLE/CONSTANT AIR VOLUME WATER SOURCE HEAT PUMP SIZE: 803 300F



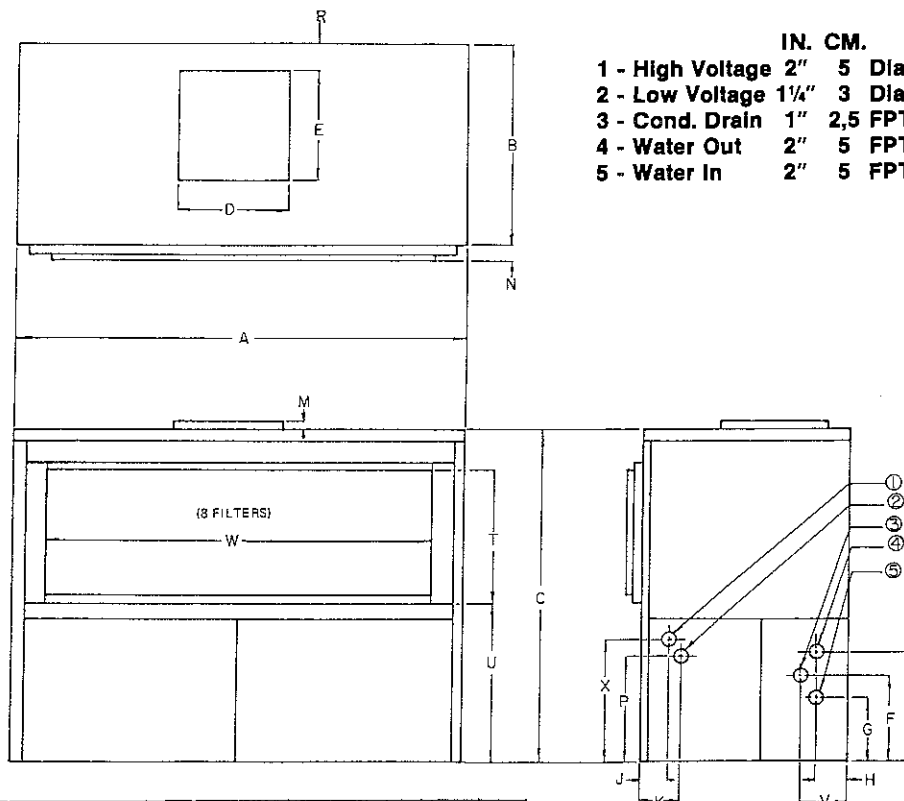
ClimateMaster

A COMBINATION OF CHP CORP. AND
FRIEDRICH™ CLIMATE MASTER, INC.

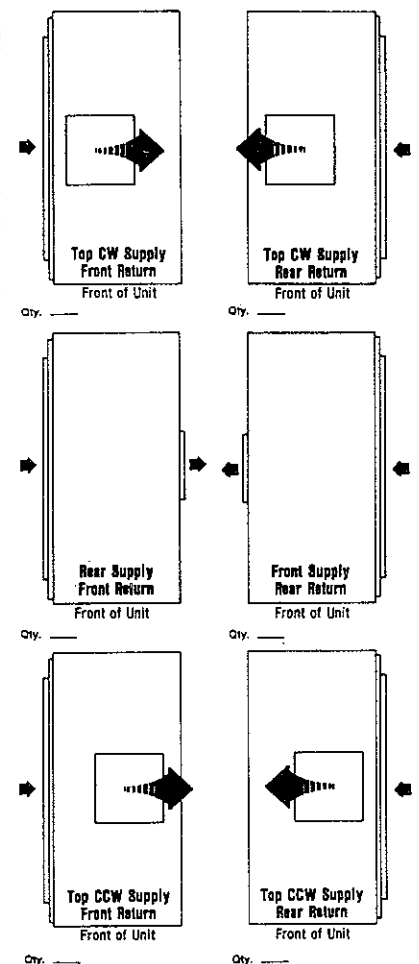
TAG: _____

JOB SCHEDULE	TOTAL BTUH	INPUT WATTS	SENSIBLE BTUH	BTUH HEAT OF ABS./REJ.	EER COP	GPM	EWT	LWT	EAT	PRESSURE DROP IN FEET
COOLING										
HEATING										
ELECTRICAL DATA		BLOWER		COMPRESSOR		MIN CKT AMPACITY		MAX. FUSE OR HACR SIZE		
VOLTAGE	PHASE	HP/FLA	RLA	LRA						
460	3	5/7.3	32	160			57			90
460	3	7.5/10.5	32	160			61			100
460	3	10/12.5	32	160			63			100
460	3	15/20	32	160			70			110
460	3	20/25	32	160			75			110
BLOWER PERFORMANCE						INSTALLED WEIGHT				
EXT. STATIC PRES. I.W.G.						lbs.				
CFM						kg.				

DIMENSIONS



AIR FLOW PATTERNS



SZ.	A	B	C	D	E	F	G	H	J	K	L
IN.	105 1/2	46 1/2	77 3/4	20 1/4	25 1/4	17 1/2	11 1/2	5 11/16	5 3/4	7 3/4	22 11/16
CM.	268	117	197	51	64	44	29	14	15	20	58

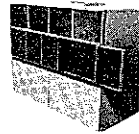
SZ.	M	N	P	R	S	T	U	V	W	X	Y
IN.	1 1/2	6 3/4	20	12 3/16	42 3/4	38 1/4	33	8 13/16	96 3/4	24 1/2	
CM.	4	17	51	31	108	97	84	22	245	62	

FILTER SIZE **20" x 25"**
51 x 63,5 cm.

SHIPPING WGT. **2800 lbs.**
1260 kg.

Continuing engineering research results in steady improvements. Therefore, these ratings and specifications are subject to change without notice.
No one is authorized to reproduce or alter this document in any way without the written authorization of an officer of the company.

VARI-MASTER SERIES
VARIABLE/CONSTANT AIR VOLUME
WATER SOURCE HEAT PUMP
SIZE: 903 240N



ClimateMaster
 A COMBINATION OF CHP CORP. AND
 FRIEDRICH™ CLIMATE MASTER, INC.

TAG: _____

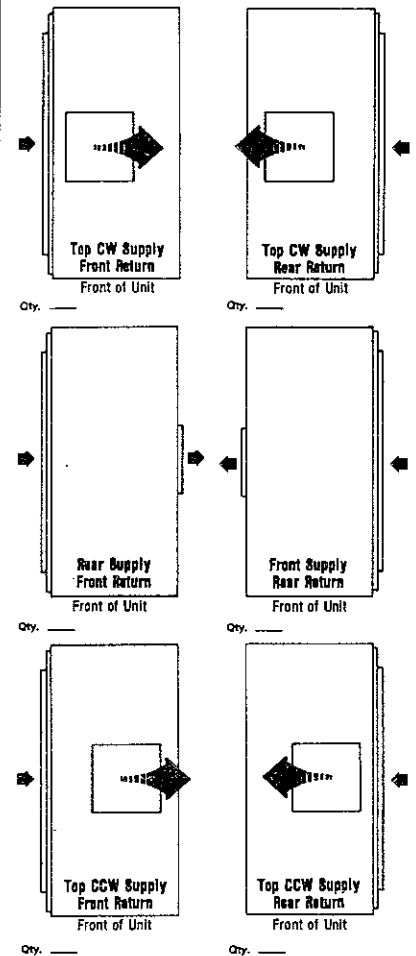
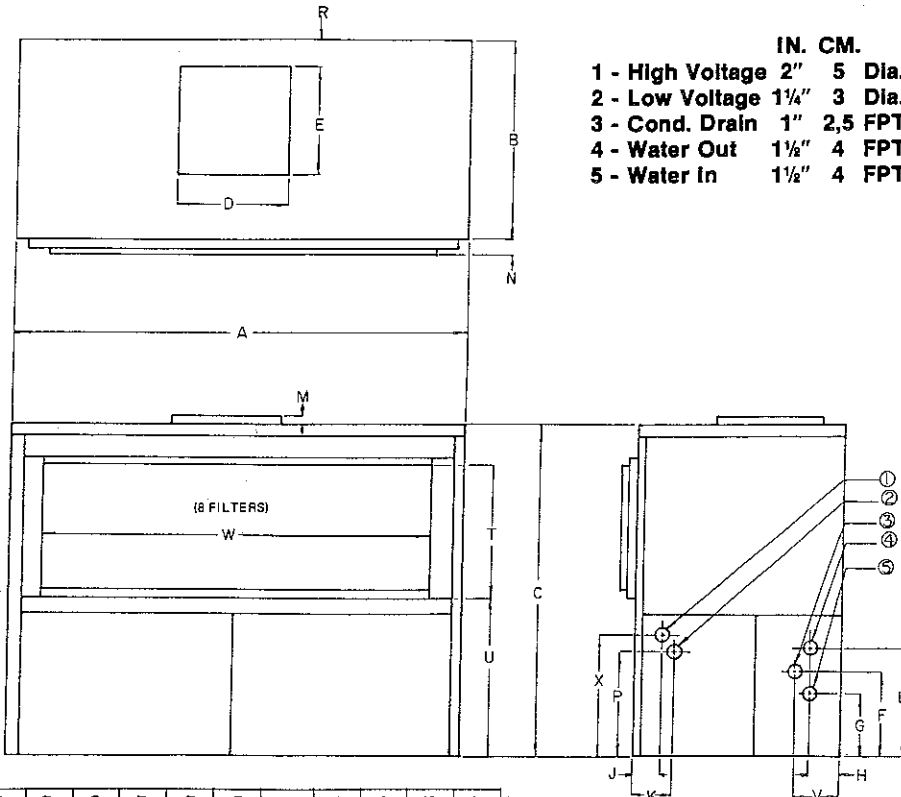
JOB SCHEDULE	TOTAL BTUH	INPUT WATTS	SENSIBLE BTUH	BTUH HEAT OF ABS./REJ.	EER COP	GPM	EWT	LWT	EAT	PRESSURE DROP IN FEET
COOLING										
HEATING										

ELECTRICAL DATA		BLOWER	COMPRESSOR		MIN CKT AMPACITY	MAX. FUSE OR HACR SIZE
VOLTAGE	PHASE	HP/FLA	RLA	LRA		
575	3	3/3.8	28	135	39	60
575	3	5/5.9	28	135	41	60
575	3	7.5/8.5	28	135	44	70
575	3	10/10.4	28	135	45	70
575	3	15/16	28	135	51	70

BLOWER PERFORMANCE		INSTALLED WEIGHT	
EXT. STATIC PRES. I.W.G.		lbs.	
CFM		kg.	

DIMENSIONS

AIR FLOW PATTERNS



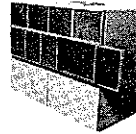
SZ.	A	B	C	D	E	F	G	H	J	K	L
IN.	105 1/4	46 1/4	77 3/4	20 1/4	25 1/4	9 3/16		8 13/16	5 3/4	7 3/4	17 1/4
CM.	268	117	197	51	64	25		22	15	20	44

SZ.	M	N	P	R	S	T	U	V	W	X	Y
IN.	1 1/2	6 3/4	20	12 7/16	42 3/4	38 3/4	33	10 7/16	96 1/4	24 1/4	6 11/16
CM.	4	17	51	31	108	97	84	27	245	62	17

FILTER SIZE **20" x 25"**
51x63,5 cm.

SHIPPING WGT. **2400 lbs.**
1080 kg.

VARI-MASTER SERIES VARIABLE/CONSTANT AIR VOLUME WATER SOURCE HEAT PUMP SIZE: 903 240F



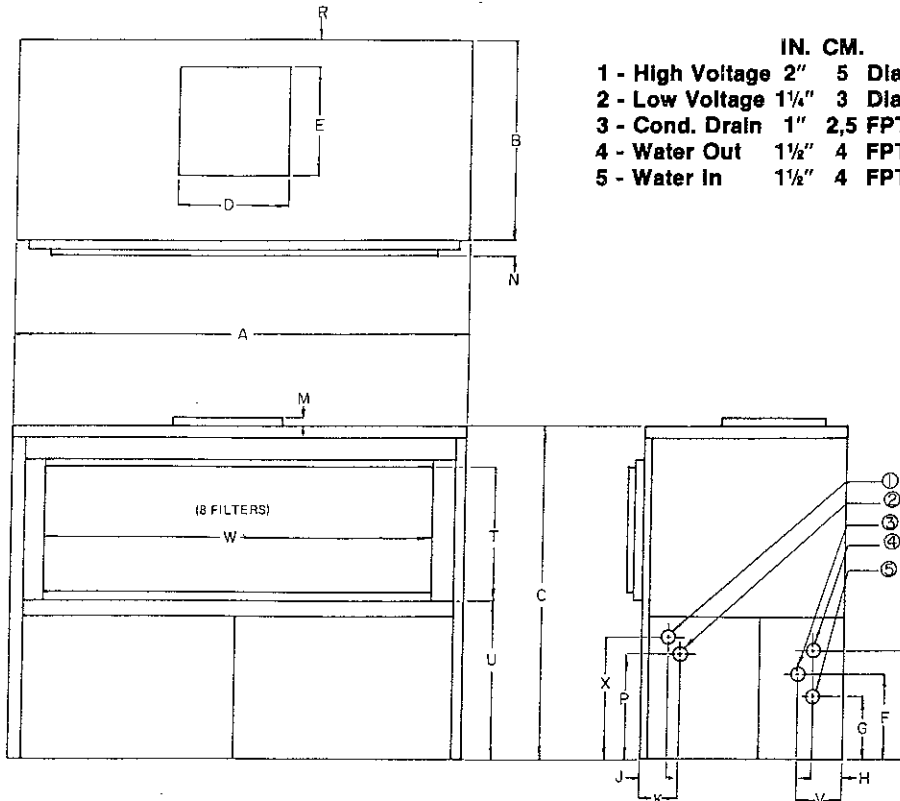
TAG: _____

JOB SCHEDULE	TOTAL BTUH	INPUT WATTS	SENSIBLE BTUH	BTUH HEAT OF ABS./REJ.	EER COP	GPM	EWT	LWT	EAT	PRESSURE DROP IN FEET
COOLING										
HEATING										

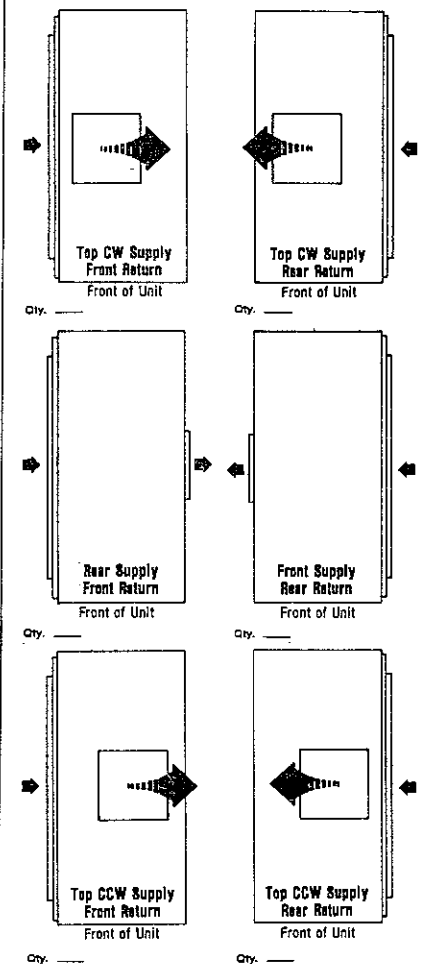
ELECTRICAL DATA		BLOWER	COMPRESSOR		MIN CKT AMPACITY	MAX, FUSE OR HACR SIZE
VOLTAGE	PHASE	HP/FLA	RLA	LRA		
460	3	3/5	35	154	49	80
460	3	5/7.3	35	154	51	80
460	3	7.5/10.5	35	154	54	80
460	3	10.0/12.5	35	154	56	90
460	3	15.0/20.0	35	154	64	90

BLOWER PERFORMANCE			INSTALLED WEIGHT		
EXT. STATIC PRES. I.W.G.			lbs.		
CFM			kg.		

DIMENSIONS



AIR FLOW PATTERNS



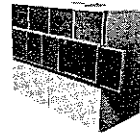
SZ.	A	B	C	D	E	F	G	H	J	K	L
IN.	105 1/2	46 1/4	77 3/8	20 3/4	25 1/4	9 13/16		8 13/16	5 3/4	7 3/4	17 1/4
CM.	268	117	197	51	64	25		22	15	20	44

SZ.	M	N	P	R	S	T	U	V	W	X	Y
IN.	1 1/2	6	20	12 3/16	42 3/4	38 1/4	33	10 7/16	96 1/2	24 1/2	6 11/16
CM.	4	17	51	31	108	97	84	27	245	62	17

FILTER SIZE **20"x25"** SHIPPING WGT. **2400 lbs.**
51x63.5 cm. **1080 kg.**

Continuing engineering research results in steady improvements. Therefore, these ratings and specifications are subject to change without notice. No one is authorized to reproduce or alter this document in any way without the written authorization of an officer of the company.

**VARI-MASTER SERIES
VARIABLE/CONSTANT AIR VOLUME
WATER SOURCE HEAT PUMP
SIZE: 803 240N**



ClimateMaster
A COMBINATION OF CHP CORP. AND
FRIEDRICH™ CLIMATE MASTER, INC.

TAG: _____

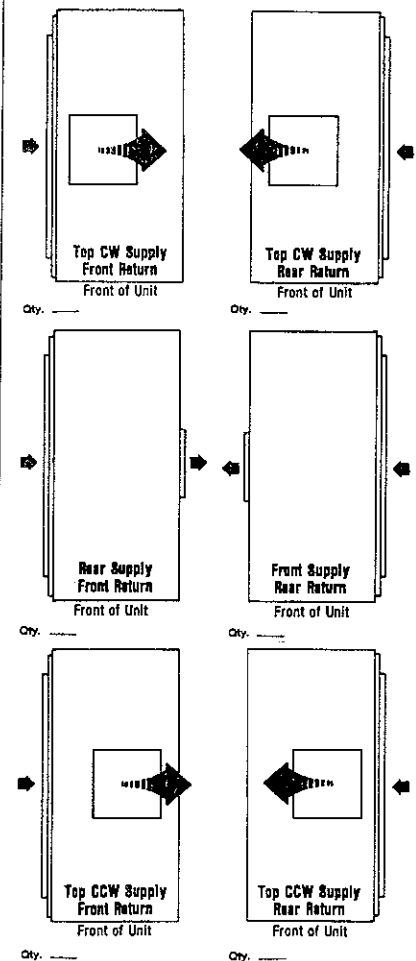
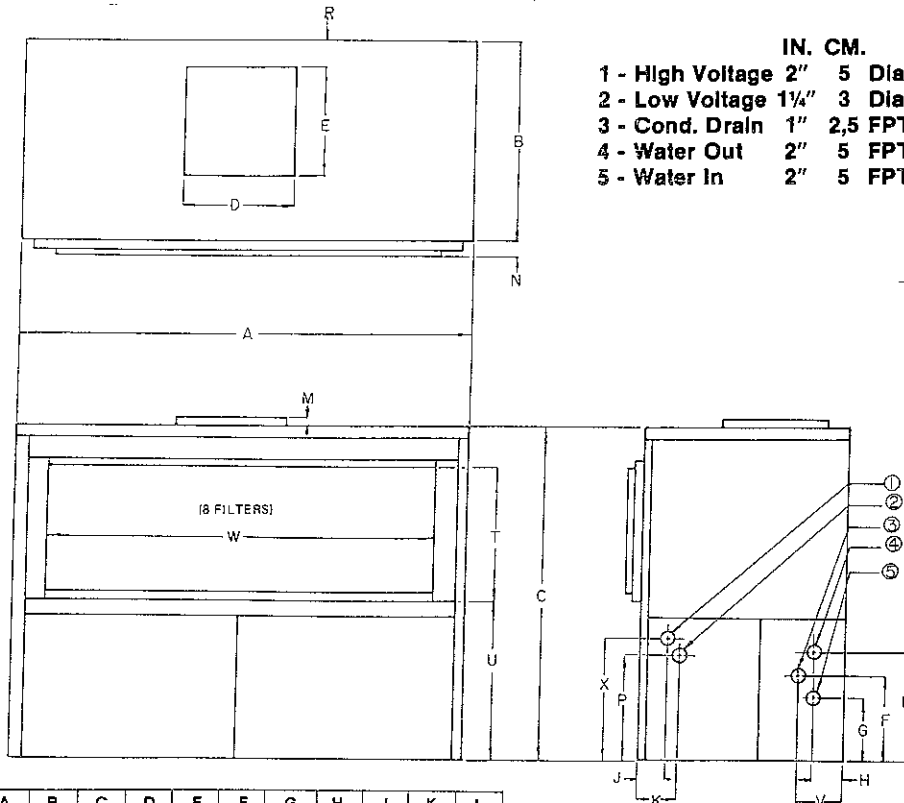
JOB SCHEDULE	TOTAL BTUH	INPUT WATTS	SENSIBLE BTUH	BTUH HEAT OF ABS./REJ.	EER COP	GPM	EWT	LWT	EAT	PRESSURE DROP IN FEET
COOLING										
HEATING										

ELECTRICAL DATA		BLOWER	COMPRESSOR		MIN CKT AMPACITY	MAX. FUSE OR HACR SIZE
VOLTAGE	PHASE	HP/FLA	RLA	LRA		
575	3	3/3.8	28	135	39	60
575	3	5/5.9	28	135	41	60
575	3	7.5/8.5	28	135	44	70
575	3	10/10.4	28	135	45	70
575	3	15/16	28	135	51	70

BLOWER PERFORMANCE			INSTALLED WEIGHT		
EXT. STATIC PRES. I.W.G.			lbs.		
CFM			kg.		

DIMENSIONS

AIR FLOW PATTERNS



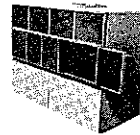
SZ.	A	B	C	D	E	F	G	H	J	K	L
IN.	105 1/2	46 1/4	77 3/4	20 3/4	25 1/4	17 1/4	11 3/4	5 1/2	5 3/4	7 3/4	22 1/2
CM.	268	117	197	51	64	44	29	14	15	20	58

SZ.	M	N	P	R	S	T	U	V	W	X	Y
IN.	1 1/2	6 3/4	20	12 3/4	42 3/4	38 3/4	33	8 1/2	96 1/2	24 1/2	
CM.	4	17	51	31	108	97	84	22	245	62	

FILTER SIZE **20"x25"** SHIPPING WGT. **2800 lbs.**
51x63,5 cm. **1260 kg.**

Continuing engineering research results in steady improvements. Therefore, these ratings and specifications are subject to change without notice. No one is authorized to reproduce or alter this document in any way without the written authorization of an officer of the company.

VARI-MASTER SERIES VARIABLE/CONSTANT AIR VOLUME WATER SOURCE HEAT PUMP SIZE: 803 240F



ClimateMaster
A COMBINATION OF CHP CORP. AND
FRIEDRICH™ CLIMATE MASTER, INC.

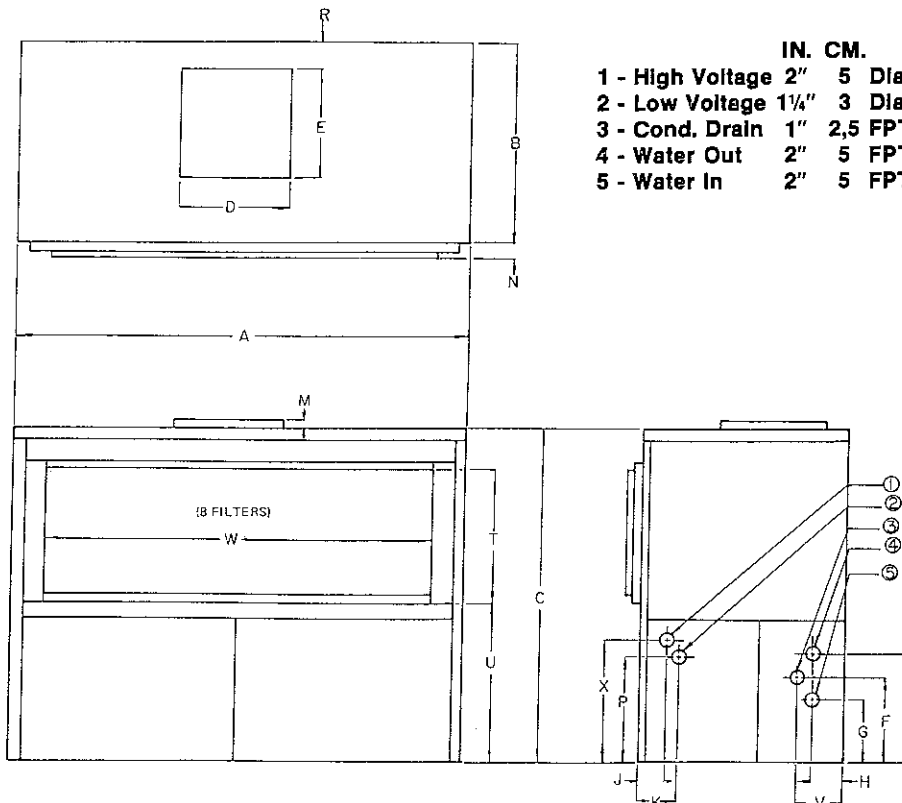
TAG: _____

JOB SCHEDULE	TOTAL BTUH	INPUT WATTS	SENSIBLE BTUH	BTUH HEAT OF ABS./REJ.	EER COP	GPM	EWT	LWT	EAT	PRESSURE DROP IN FEET
COOLING										
HEATING										

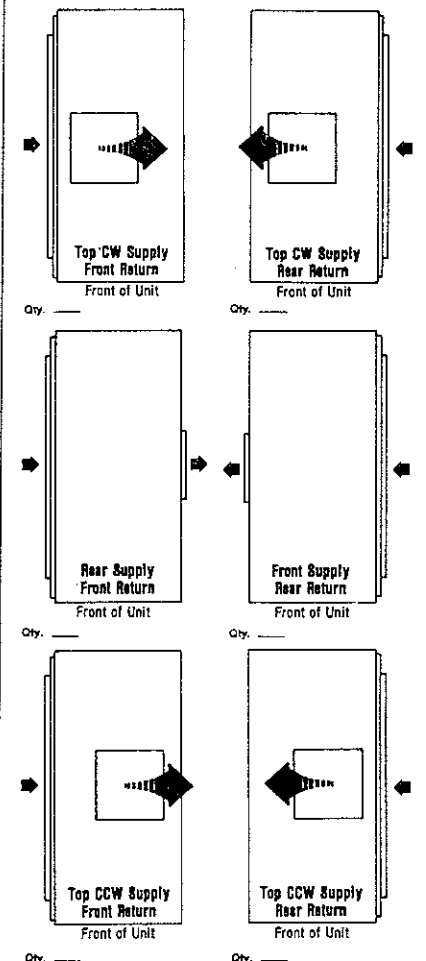
ELECTRICAL DATA		BLOWER	COMPRESSOR		MIN CKT AMPACITY	MAX. FUSE OR HACR SIZE
VOLTAGE	PHASE	HP/FLA	RLA	LRA		
460	3	3/5	35	154	49	80
460	3	5/7.3	35	154	51	80
460	3	7.5/10.5	35	154	54	80
460	3	10.0/12.5	35	154	56	90
460	3	15.0/20.0	35	154	64	90

BLOWER PERFORMANCE			INSTALLED WEIGHT		
EXT. STATIC PRES. I.W.G.			lbs.		
CFM			kg.		

DIMENSIONS



AIR FLOW PATTERNS



SZ.	A	B	C	D	E	F	G	H	J	K	L
IN.	105 1/2	46 1/4	77 3/4	20 1/4	25 1/4	17 1/4	11 1/2	5 11/16	5 1/4	7 1/4	22 11/16
CM.	268	117	197	51	64	44	29	14	15	20	58

SZ.	M	N	P	R	S	T	U	V	W	X	Y
IN.	1 1/2	8 3/4	20	12 3/16	42 3/4	38 1/4	33	8 11/16	96 1/4	24 1/2	
CM.	4	17	51	31	108	97	84	22	245	62	

FILTER SIZE **20" x 25"** SHIPPING WGT. **2800 lbs.**
51 x 63,5 cm. **1260 kg.**

Continuing engineering research results in steady improvements. Therefore, these ratings and specifications are subject to change without notice. No one is authorized to reproduce or alter this document in any way without the written authorization of an officer of the company.