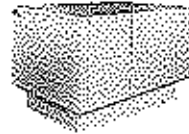


**802 SERIES  
ROOFTOP WATER SOURCE  
HEAT PUMP  
SIZE: 041M**



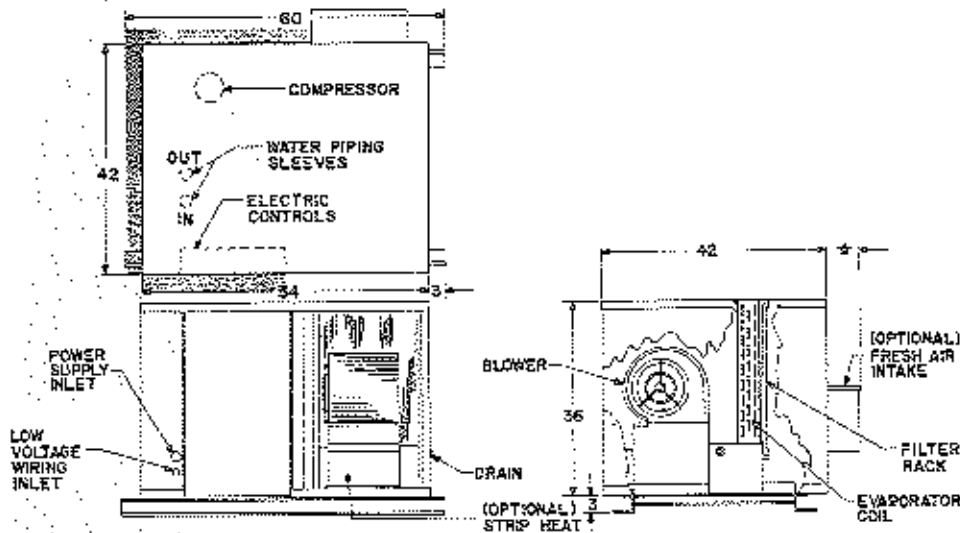
**ClimateMaster**  
A COMBINATION OF CHP CORP. AND  
FRIEDRICH™ CLIMATE MASTER, INC.

**TAG:** \_\_\_\_\_

JOB SCHEDULE	TOTAL BTUH	INPUT WATTS	SENSIBLE BTUH	BTUH HEAT OF ABS./REJ.	EER COP	GPM	EWT	LWT	EAT	PRESSURE DROP IN FEET
COOLING										
HEATING										
ELECTRICAL DATA		BLOWER		COMPRESSOR		MIN. CKT. AMPACITY		MAX. FUSE OR HACR SIZE		
VOLTAGE	PHASE	FLA	RLA	LRA						
208	3	5.7	12.2	72.0		19.3				30
230	3	5.7	12.2	72.0		19.0				30
460	3	1.6	6.1	35.0		9.4				15
BLOWER PERFORMANCE						INSTALLED WEIGHT				
EXT. STATIC PRES. I.W.G.						lbs.				
CFM						kg.				

**DIMENSIONS**

**AIR FLOW PATTERNS**



Shaded Area Indicates 3' Clearance must be left for access to Compressor and Electric Panel.

\*Add 6" for 25% outside air intake and 13" for economizer hoods

in.	3	36	42	54	60
cm.	8	91	107	137	152

FILTER SIZE 22"x28" SHIPPING WGT. 450 lbs.  
56x71 cm. 203 kg.

Continuing engineering research results in steady improvements. Therefore, these ratings and specifications are subject to change without notice. No one is authorized to reproduce or alter this document in any way without the written authorization of an officer of the company.

**802 SERIES  
ROOFTOP WATER SOURCE  
HEAT PUMP  
SIZE: 041S**



**ClimateMaster**  
A COMBINATION OF CHP CORP. AND  
FRIEDRICH™ CLIMATE MASTER, INC.

**TAG:** \_\_\_\_\_

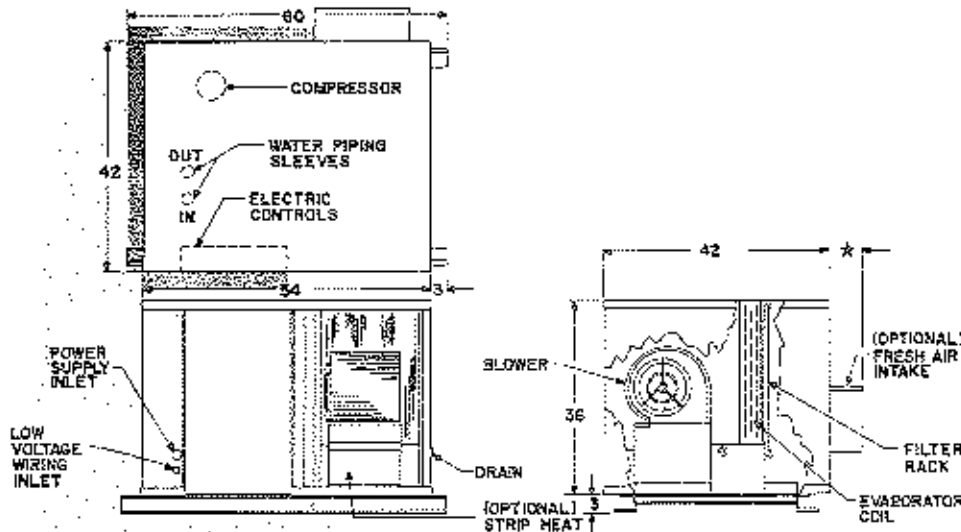
JOB SCHEDULE	TOTAL BTUH	INPUT WATTS	SENSIBLE BTUH	BTUH HEAT OF ABS./REJ.	EER COP	GPM	EWT	LWT	EAT	PRESSURE DROP IN FEET
COOLING										
HEATING										

ELECTRICAL DATA		BLOWER	COMPRESSOR		MIN. CKT. AMPACITY	MAX. FUSE OR HACR SIZE
VOLTAGE	PHASE	FLA	RLA	LRA		
208	3	4.3	12.2	72.0	21.0	30
230	3	4.3	12.2	72.0	21.0	30
460	3	1.1	6.1	35.0	9.2	15

BLOWER PERFORMANCE			INSTALLED WEIGHT		
EXT. STATIC PRES. I.W.G.			lbs.		
CFM			kg		

**DIMENSIONS**

**AIR FLOW PATTERNS**



Shaded Area Indicates 3' Clearance must be left for access to Compressor and Electric Panel.

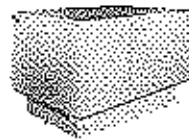
\*Add 6" for 25% outside air intake and 13" for economizer hoods

in.	3	36	42	54	60
cm.	8	91	107	137	152

FILTER SIZE	22"x28" 56x71 cm.	SHIPPING WGT.	450 lbs. 203 kg.
-------------	----------------------	---------------	---------------------

Continuing engineering research results in steady improvements. Therefore, these ratings and specifications are subject to change without notice. No one is authorized to reproduce or alter this document in any way without the written authorization of an officer of the company.

**802 SERIES  
ROOFTOP WATER SOURCE  
HEAT PUMP  
SIZE: 051M**



**TAG:** \_\_\_\_\_

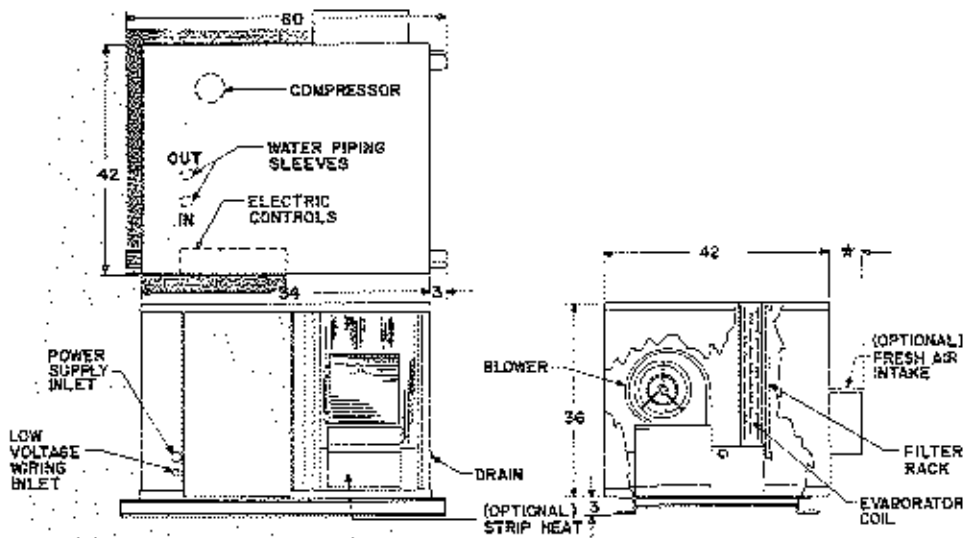
JOB SCHEDULE	TOTAL BTUH	INPUT WATTS	SENSIBLE BTUH	BTUH HEAT OF ABS./REJ.	EER COP	GPM	EWT	LWT	EAT	PRESSURE DROP IN FEET
COOLING										
HEATING										

ELECTRICAL DATA		BLOWER	COMPRESSOR		MIN. CKT. AMPACITY	MAX. FUSE OR HACR SIZE
VOLTAGE	PHASE	FLA	RLA	LRA		
208/230	3	4.0	13.5	93.0	22.5	35
460	3	1.8	7.0	47.0	11.6	15

BLOWER PERFORMANCE			INSTALLED WEIGHT		
EXT. STATIC PRES. I.W.G.			lbs.		
CFM			kg.		

**DIMENSIONS**

**AIR FLOW PATTERNS**



Shaded Area Indicates 3" Clearance must be left for access to Compressor and Electric Panel.

\*Add 6" for 25% outside air intake and 13" for economizer hoods

in.	3	36	42	54	60
cm.	8	91	107	137	152

FILTER SIZE	22"x28" 56x71 cm.	SHIPPING WGT.	500 lbs. 225 kg.
-------------	----------------------	---------------	---------------------

Continuing engineering research results in steady improvements. Therefore, these ratings and specifications are subject to change without notice. No one is authorized to reproduce or alter this document in any way without the written authorization of an officer of the company.

**802 SERIES  
ROOFTOP WATER SOURCE  
HEAT PUMP  
SIZE: 051S**



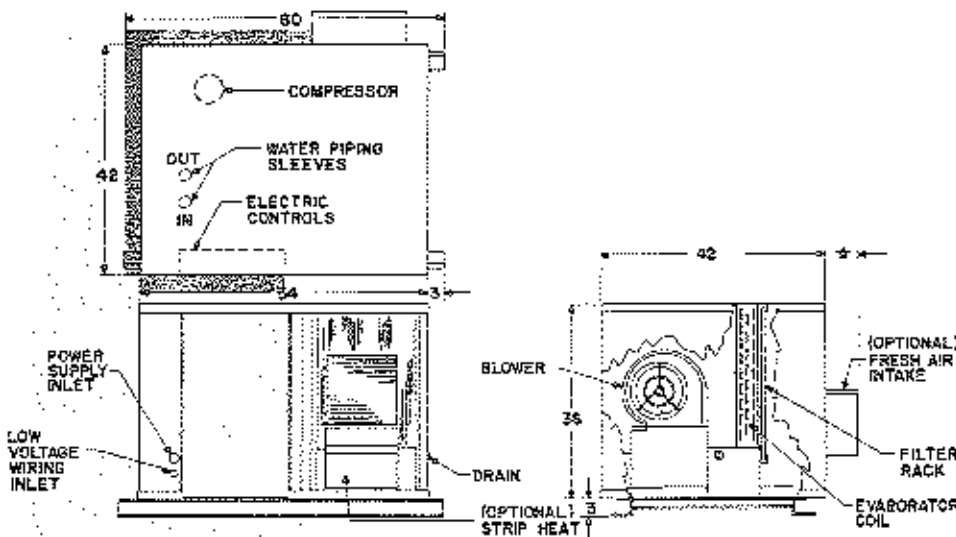
**ClimateMaster**  
A COMBINATION OF CHP CORP AND  
FRIEDRICH™ CLIMATE MASTER, INC.

**TAG:** \_\_\_\_\_

JOB SCHEDULE	TOTAL BTUH	INPUT WATTS	SENSIBLE BTUH	BTUH HEAT OF ABS./REJ.	EER COP	GPM	EWT	LWT	EAT	PRESSURE DROP IN FEET
COOLING										
HEATING										
ELECTRICAL DATA		BLOWER		COMPRESSOR		MIN. CKT AMPACITY		MAX. FUSE OR HACR SIZE		
VOLTAGE	PHASE	FLA	FLA	FLA	FLA					
208/230	3	5.7	13.5	93.0	20.9	30				
460	3	1.6	7.0	47.0	10.6	15				
BLOWER PERFORMANCE						INSTALLED WEIGHT				
EXT. STATIC PRES. I.W.G.						lbs.				
CFM						kg.				

**DIMENSIONS**

**AIR FLOW PATTERNS**



Shaded Area indicates 3" Clearance must be left for access to Compressor and Electric Panel.

\*Add 6" for 25% outside air intake and 13" for economizer hoods

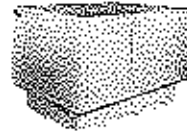
in.	3	36	42	54	60
cm.	8	91	107	137	152

FILTER SIZE	22"x28" 56x71 cm.	SHIPPING WGT.	500 lbs. 225 kg.
-------------	----------------------	---------------	---------------------

Continuing engineering research results in steady improvements. Therefore, these ratings and specifications are subject to change without notice. No one is authorized to reproduce or alter this document in any way without the written authorization of an officer of the company.



**802 SERIES  
ROOFTOP WATER SOURCE  
HEAT PUMP  
SIZE: 071S**



**ClimateMaster**  
A COMBINATION OF CHP CORP. AND  
FRIEDRICH™ CLIMATE MASTER, INC.

**TAG:** \_\_\_\_\_

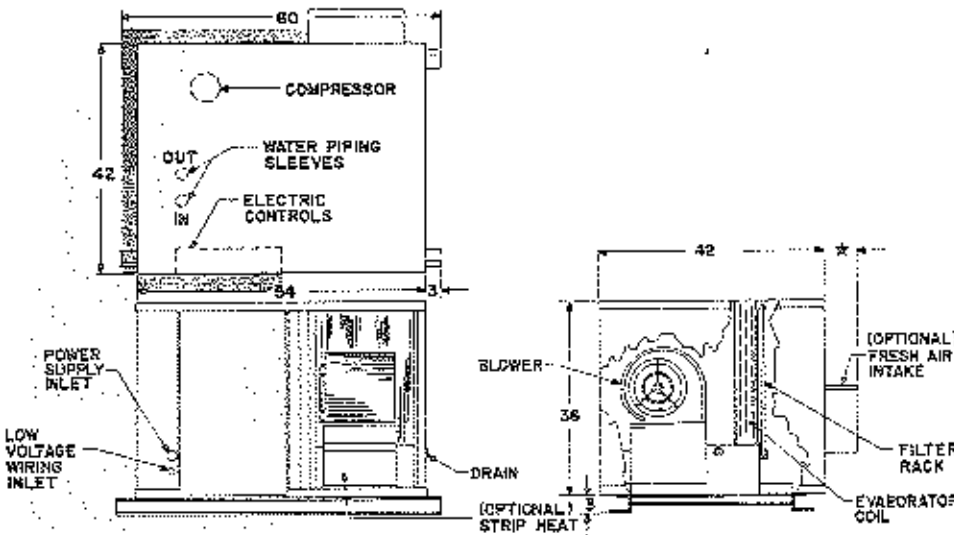
JOB SCHEDULE	TOTAL BTUH	INPUT WATTS	SENSIBLE BTUH	BTUH HEAT OF ABS./REJ.	EER COP	GPM	EWT	LWT	EAT	PRESSURE DROP IN FEET
COOLING										
HEATING										

ELECTRICAL DATA		BLOWER	COMPRESSOR		MIN CKT AMPACITY	MAX. FUSE OR HACR SIZE
VOLTAGE	PHASE	FLA	FLA	LRA		
208/230	3	4.0	18.7	125.0	27.4	45
460	3	1.8	9.5	62.0	13.7	20

BLOWER PERFORMANCE			INSTALLED WEIGHT		
EXT. STATIC PRES. I.W.G.			lbs		
CFM			kg.		

**DIMENSIONS**

**AIR FLOW PATTERNS**



Shaded Area Indicates 3' Clearance must be left for access to Compressor and Electric Panel.

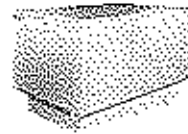
\*Add 5" for 25% outside air intake and 13" for economizer hoods

In.	3	36	42	54	60
cm.	8	91	107	137	152

FILTER SIZE 22" x 28" SHIPPING WGT. 600 lbs.  
55 x 71 cm. 270 kg.

Continuing engineering research results in steady improvements. Therefore, these ratings and specifications are subject to change without notice. No one is authorized to reproduce or alter this document in any way without the written authorization of an officer of the company.

**802 SERIES  
ROOFTOP WATER SOURCE  
HEAT PUMP  
SIZE: 092M**



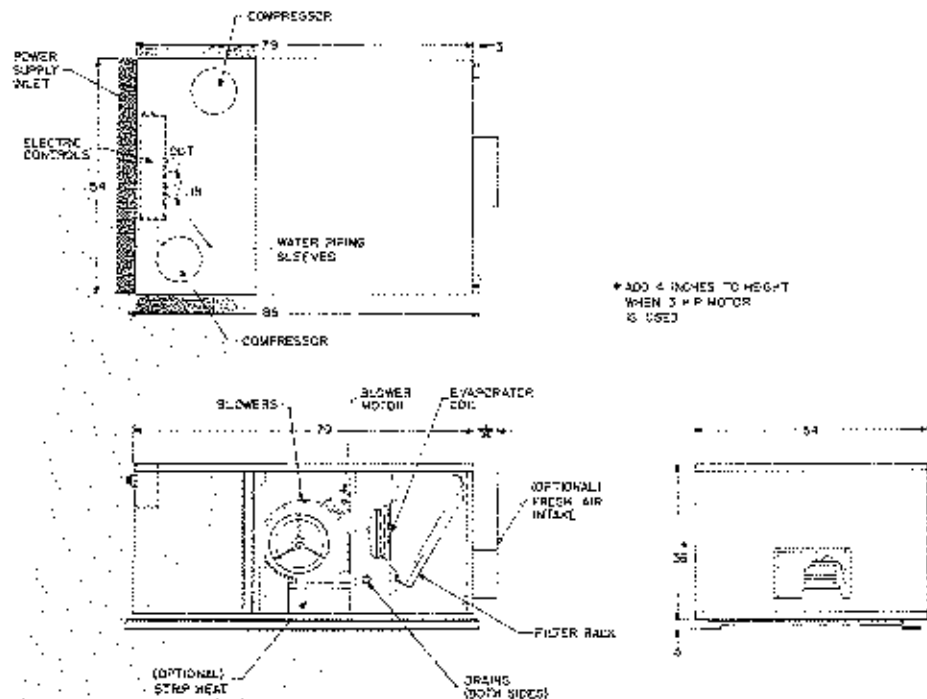
**ClimateMaster**  
A COMBINATION OF CHP CORP. AND  
FRIEDRICH™ CLIMATE MASTER, INC.

**TAG:** \_\_\_\_\_

JOB SCHEDULE	TOTAL BTUH	INPUT WATTS	SENSIBLE BTUH	BTUH HEAT OF ABS./REJ.	ZER COP	GPM	EWT	LWT	EAT	PRESSURE DROP IN FEET
COOLING										
HEATING										
ELECTRICAL DATA		BLOWER		COMPRESSOR		MIN. CRT AMPACITY		MAX. FUSE OR HACR SIZE		
VOLTAGE	PHASE	FLA	RLA	LRA						
208/230	3	6.6	12.2	72.0	33.1		45			
460	3	3.3	6.1	35.0	16.5		20			
BLOWER PERFORMANCE				INSTALLED WEIGHT						
EXT. STATIC PRES. I.W.G.				lbs.						
CFM				kg.						

**DIMENSIONS**

**AIR FLOW PATTERNS**



\* ADD 4 INCHES TO HEIGHT WHEN 3 HP MOTOR IS USED

Shaded Area indicates 3" Clearance must be left for access to Compressor and Electric Panel.

\* Add 6" for 25% outside air intake and 17" for economizer hoods

in.	3	36	54	79	85
cm.	8	91	137	201	216

FILTER SIZE	14" x 25" 36 x 64 cm.	SHIPPING WGT.	1225 lbs. 551 kg.
-------------	--------------------------	---------------	----------------------

**802 SERIES  
ROOFTOP WATER SOURCE  
HEAT PUMP  
SIZE: 092S**



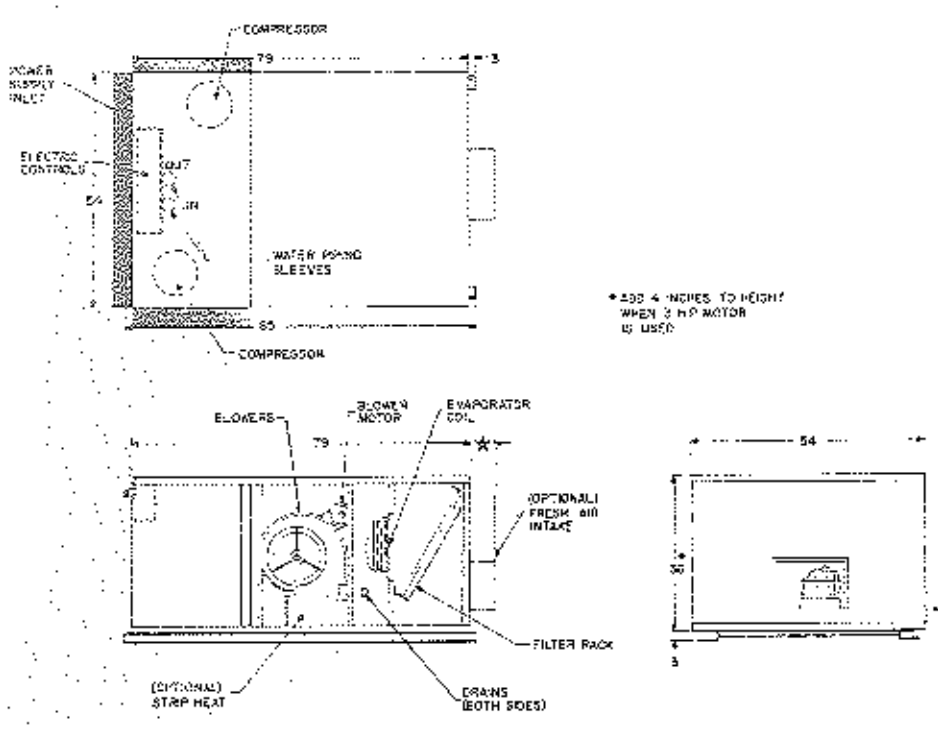
**ClimateMaster**  
A COMBINATION OF OHP CORP. AND  
FRIEDRICH™ CLIMATE MASTER, INC.

**TAG:** \_\_\_\_\_

JOB SCHEDULE	TOTAL BTUH	INPUT WATTS	SENSIBLE BTUH	BTUH HEAT OF ABS./REJ.	ESR COP	GPM	EWT	LWT	EAT	PRESSURE DROP IN FEET
COOLING										
HEATING										
ELECTRICAL DATA		BLOWER		COMPRESSOR		MIN. CKT. AMPACITY		MAX. FUSE OR HACR SIZE		
VOLTAGE	PHASE	FLA	RLA	ERA						
208/230	3	5.6	12.2	72.0	31.5		40			
460	3	2.8	6.1	35.0	15.5		20			
BLOWER PERFORMANCE						INSTALLED WEIGHT				
EXT. STATIC PRES. I.W.G.						lbs.				
CFM						kg.				

**DIMENSIONS**

**AIR FLOW PATTERNS**



Shaded Area indicates 3' Clearance must be left for access to Compressor and Electric Panel.

★Add 6" for 25% outside air intake and 17" for economizer hoods

in.	3	38	54	79	85
cm.	8	97	137	201	216

FILTER SIZE	14"x25" 36x64 cm.	SHIPPING WGT.	1225 lbs. 551 kg.
-------------	----------------------	---------------	----------------------



**802 SERIES  
ROOFTOP WATER SOURCE  
HEAT PUMP  
SIZE: 122M**



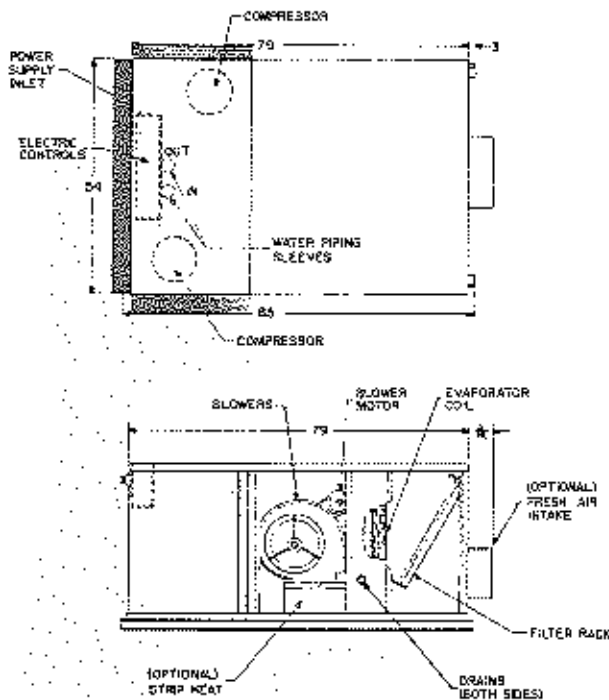
**ClimateMaster**  
A COMBINATION OF CHP CORP. AND  
FRIEDRICH™ CLIMATE MASTER, INC.

**TAG:** \_\_\_\_\_

JOB SCHEDULE	TOTAL BTUH	INPUT WATTS	SENSIBLE BTUH	BTUH HEAT OF ABS./REJ.	EER COP	GPM	EWT	LWT	EAT	PRESSURE DROP IN FEET
COOLING										
HEATING										
ELECTRICAL DATA		BLOWER		COMPRESSOR		MIN. CKT. CAPACITY		MAX. FUSE OR HACR SIZE		
VOLTAGE	PHASE	FLA	RLA	LRA						
208/230	3	6.6	16.5	103.0	43.7		60			
460	3	3.3	7.8	54.0	20.9		25			
BLOWER PERFORMANCE						INSTALLED WEIGHT				
EXT. STATIC PRES. I.W.G.						lbs.				
CFM						kg.				

**DIMENSIONS**

**AIR FLOW PATTERNS**



\* ADD 4 INCHES TO HEIGHT WHEN 3 H.P. MOTOR IS USED.

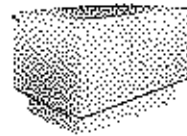
Shaded Area Indicates 3' Clearance must be left for access to Compressor and Electric Panel.

\* Add 6" for 25% outside air intake and 17" for economizer hoods

in.	3	36	54	79	85
cm.	8	91	137	201	216

FILTER SIZE	14"x25"	SHIPPING WGT.	1275 lbs.
	36x64 cm.		574 kg.

**802 SERIES  
ROOFTOP WATER SOURCE  
HEAT PUMP  
SIZE: 122S**



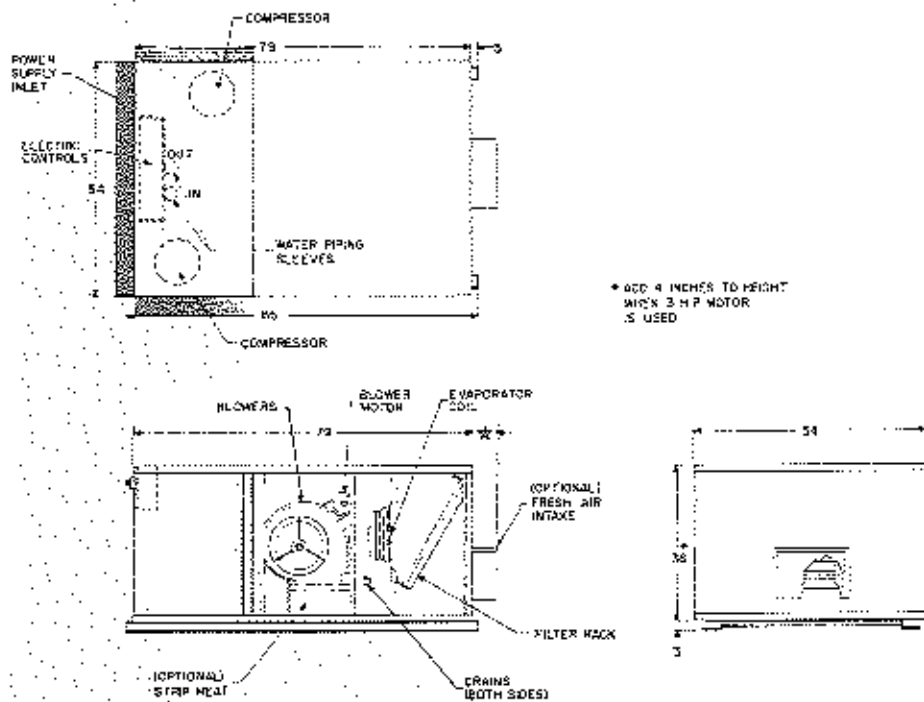
**ClimateMaster**  
A COMBINATION OF CHP CORP. AND  
FRIEDRICH CLIMATE MASTER, INC.

**TAG:** \_\_\_\_\_

JOB SCHEDULE	TOTAL BTUH	INPUT WATTS	SENSIBLE BTUH	BTUH HEAT OF ABS./REJ.	EER COP	GPM	EWT	LWT	EAT	PRESSURE DROP IN FEET
COOLING										
HEATING										
ELECTRICAL DATA		BLOWER		COMPRESSOR			MIN. CKT. AMPACITY		MAX. FUSE OR HACR SIZE	
VOLTAGE	PHASE	FLA	RLA	LRA						
208/230	3	5.6	16.5	103.0	42.7		50			
460	3	2.8	7.8	54.0	20.4		25			
BLOWER PERFORMANCE						INSTALLED WEIGHT				
EXT. STATIC PRES. I.W.G.						lbs.				
CFM						kg.				

**DIMENSIONS**

**AIR FLOW PATTERNS**



\*ADD 4 INCHES TO HEIGHT WITH 3 H.P. MOTOR IS USED

Shaded Area Indicates 3' Clearance must be left for access to Compressor and Electric Panel.

\*Add 6" for 25% outside air intake and 17" for economizer hoods

in.	3	36	54	79	85
cm.	8	91	137	201	216

FILTER SIZE	14"x25"	SHIPPING WGT.	1275 lbs.
	36x64 C.O.I.		574 kg.

Continuing engineering research results in steady improvements. Therefore, these ratings and specifications are subject to change without notice. No one is authorized to reproduce or alter this document in any way without the written authorization of an officer of the company.

**802 SERIES  
ROOFTOP WATER SOURCE  
HEAT PUMP  
SIZE: 142M**



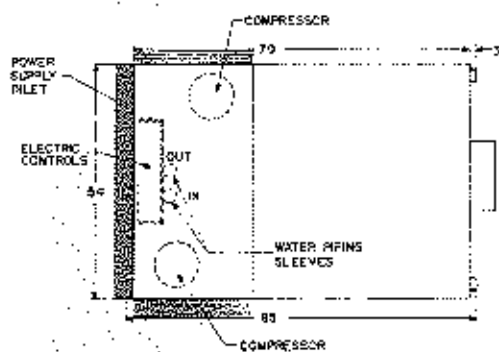
**ClimateMaster**  
A COMBINATION OF CHP CORP. AND  
FRIEDRICH™ CLIMATE MASTER, INC.

**TAG:** \_\_\_\_\_

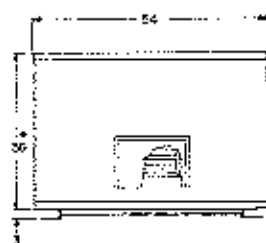
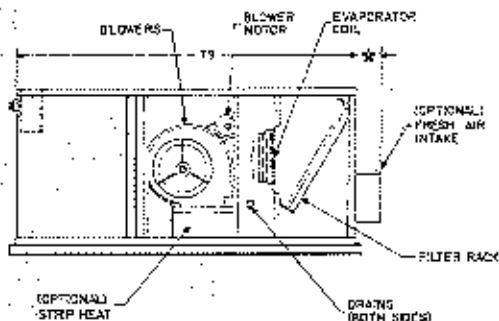
JOB SCHEDULE	TOTAL BTUH	INPUT WATTS	SENSIBLE BTUH	BTUH HEAT OF ABS./REJ.	EER COP	GPM	EWT	LWT	EAT	PRESSURE DROP IN FEET
COOLING										
HEATING										
ELECTRICAL DATA			BLOWER		COMPRESSOR		MIN. CKT AMPACITY		MAX. FUSE OR HACR SIZE	
VOLTAGE	PHASE	FLA	FLA	LRA						
208/230	3	11.3/9.8	18.7	126.0	53.3		70			
460	3	4.9	9.5	62.0	26.3		35			
BLOWER PERFORMANCE						INSTALLED WEIGHT				
EXT. STATIC PRES. I.W.G.						lbs.				
CFM						kg.				

**DIMENSIONS**

**AIR FLOW PATTERNS**



\* ADD 4 INCHES TO HEIGHT WHEN 3 H.P. MOTOR IS USED



Shaded Area Indicates 3' Clearance must be left for access to Compressor and Electric Panel.

\*Add 6" for 25% outside air intake and 17" for economizer hoods

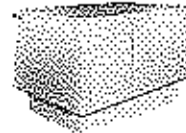
in.	3	36	54	79	85
cm.	8	91	137	201	216

FILTER SIZE 14" x 25"  
36x64 cm.

SHIPPING WGT. 1285 lbs.  
578 kg.

Continuing engineering research results in steady improvements. Therefore, these ratings and specifications are subject to change without notice. No one is authorized to reproduce or alter this document in any way without the written authorization of an officer of the company.

**802 SERIES  
ROOFTOP WATER SOURCE  
HEAT PUMP  
SIZE: 142S**



**ClimateMaster**  
A COMBINATION OF CHP CORP. AND  
FRIEDRICH™ CLIMATE MASTER, INC

**TAG:** \_\_\_\_\_

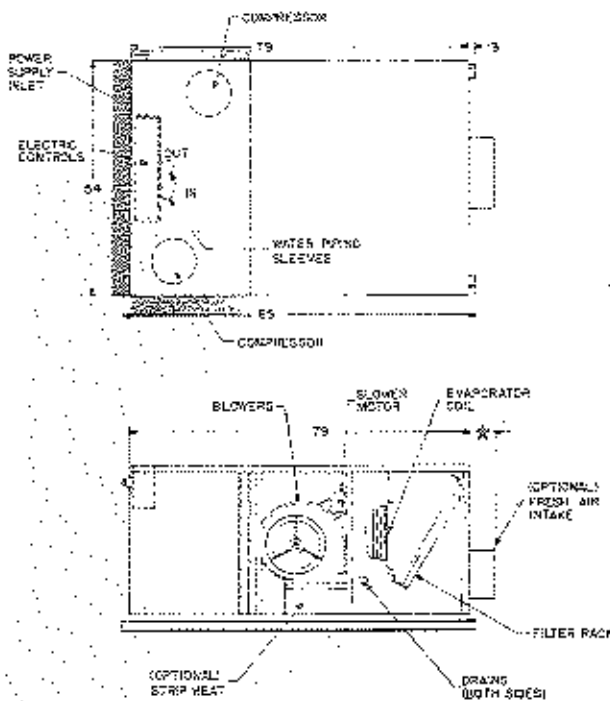
JOB SCHEDULE	TOTAL BTU/H	INPUT WATTS	SENSIBLE BTU/H	BTU/H HEAT OF ABS./REJ.	EER COP	GPM	EWT	LWT	EAT	PRESSURE DROP IN FEET
COOLING										
HEATING										

ELECTRICAL DATA		BLOWER		COMPRESSOR		MIN. CKT. AMPACITY	MAX. FUSE OR HACR SIZE
VOLTAGE	PHASE	FLA	RLA	LRA			
208/230	3	6.6	18.7	126.0		48.7	60
460	3	3.3	9.5	62.0		24.7	30

BLOWER PERFORMANCE				INSTALLED WEIGHT	
EXT. STATIC PRES. I.W.G.				lbs.	
CFM				kg.	

**DIMENSIONS**

**AIR FLOW PATTERNS**



★ ADD 4 INCHES TO HEIGHT WHEN 3 HP MOTOR IS USED



Shaded Area Indicates 3' Clearance must be left for access to Compressor and Electric Panel.

★ Add 6" for 25% outside air intake and 17" for economizer hoods

<b>in.</b>	3	36	54	79	85
<b>cm.</b>	8	91	137	201	216

FILTER SIZE 14"x25" SHIPPING WGT. 1285 lbs.  
36x64 cm. 578 kg.

Continuing engineering research results in steady improvements. Therefore, these ratings and specifications are subject to change without notice. No one is authorized to reproduce or alter this document in any way without the written authorization of an officer of the company.

**802 SERIES  
ROOFTOP WATER SOURCE  
HEAT PUMP  
SIZE: 222M**



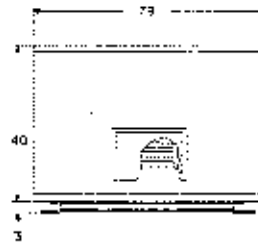
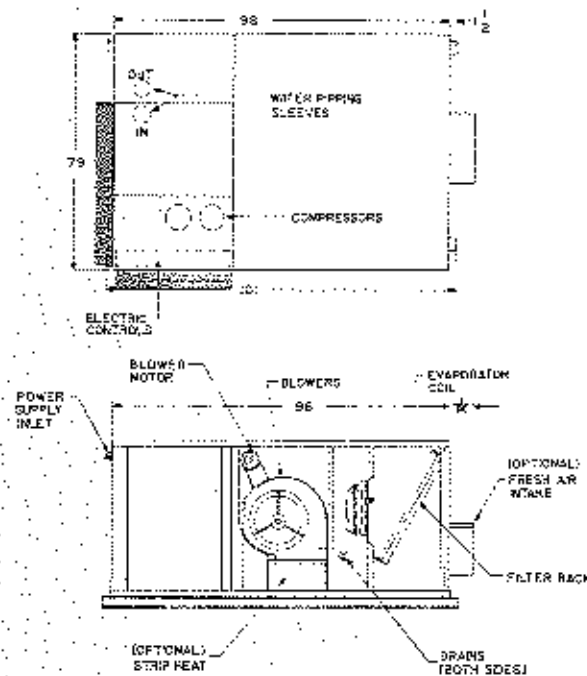
**ClimateMaster**  
A COMBINATION OF CHP CORP. AND  
FRIEDRICH™ CLIMATE MASTER, INC.

**TAG: \_\_\_\_\_**

JOB SCHEDULE	TOTAL BTUH	INPUT WATTS	SENSIBLE BTUH	BTUH HEAT OF ABS./REJ.	EER COP	GPM	EWT	LWT	EAT	PRESSURE DROP IN FEET	
COOLING											
HEATING											
ELECTRICAL DATA		BLOWER		COMPRESSOR		MIN. CKT. AMPACITY		MAX. FUSE OR HACR SIZE			
VOLTAGE	PHASE	FLA	FLA	RLA	LRA						
208/230	3	16.6/14.4		31.4	183.0	87.3/85.1		110			
460	3	7.2		14.4	93.3	39.6		50			
BLOWER PERFORMANCE								INSTALLED WEIGHT			
EXT. STATIC PRES. I.W.G.						lbs.					
CFM						kg.					

**DIMENSIONS**

**AIR FLOW PATTERNS**



Shaded Area Indicates 3' Clearance must be left for access to Compressor and Electric Panel.

\*Add 6" for 25% outside air intake and 19" for economizer hoods

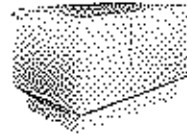
<b>in.</b>	7/8	3	40	79	98	101
<b>cm.</b>	1	8	102	201	249	257

FILTER SIZE 15"x31"  
38x78 cm.

SHIPPING WGT. 1475 lbs.  
664 kg.

Continuing engineering research results in steady improvements. Therefore, these ratings and specifications are subject to change without notice. No one is authorized to reproduce or alter this document in any way without the written authorization of an officer of the company.

**802 SERIES  
ROOFTOP WATER SOURCE  
HEAT PUMP  
SIZE: 222S**



**ClimateMaster**

A COMBINATION OF CHP CORP. AND  
FRIEDRICH\* CLIMATE MASTER, INC.

**TAG:** \_\_\_\_\_

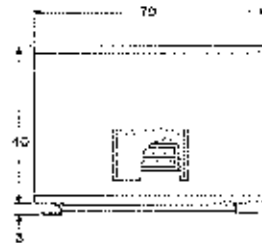
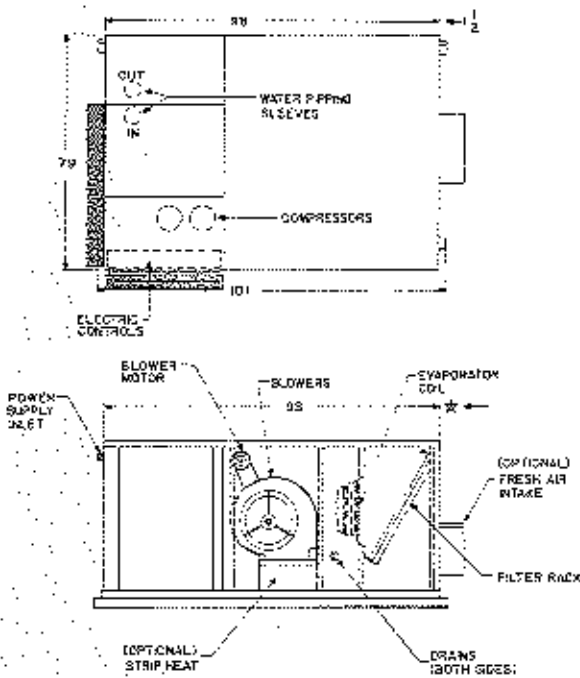
JOB SCHEDULE	TOTAL BTUH	INPUT WATTS	SENSIBLE BTUH	BTUH HEAT OF ABS./RED.	EER COP	GPM	EWT	LWT	EAT	PRESSURE DROP IN FEET
COOLING										
HEATING										


ELECTRICAL DATA		BLOWER	COMPRESSOR		MIN. CKT. AMPACITY	MAX. FUSE OR HACR SIZE
VOLTAGE	PHASE	FLA	RLA	LRA		
208/230	3	11.3/9.8	31.4	183	82.0/80.5	110
460	3	4.9	14.4	93.3	37.3	50

BLOWER PERFORMANCE			INSTALLED WEIGHT		
EXT. STATIC PRES. I.W.G.			lbs.		
CFM			kg.		

**DIMENSIONS**

**AIR FLOW PATTERNS**



 Shaded Area Indicates 3' Clearance must be left for access to Compressor and Electric Panel.

\*Add 6" for 25% outside air intake and 19" for economizer hoods

<b>in.</b>	1/2	3	40	79	98	101
<b>cm.</b>	1	8	102	201	249	257

FILTER SIZE 15"x31"  
38x78 cm.

SHIPPING WGT. 1475 lbs.  
664 kg.

Continuing engineering research results in steady improvements. Therefore, these ratings and specifications are subject to change without notice. No one is authorized to reproduce or alter this document in any way without the written authorization of an officer of the company.

**802 SERIES  
ROOFTOP WATER SOURCE  
HEAT PUMP  
SIZE: 262M**

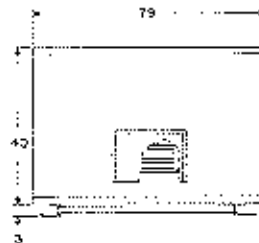
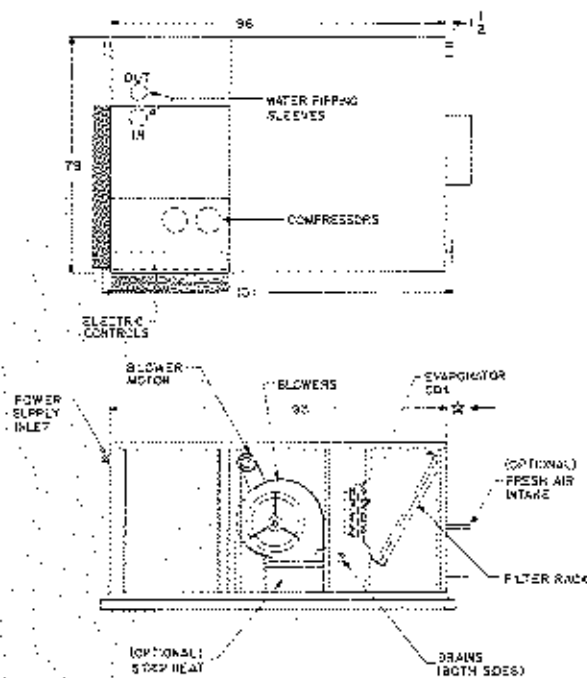


**TAG:** \_\_\_\_\_

JOB SCHEDULE	TOTAL BTUH	INPUT WATTS	SENSIBLE BTUH	BTUH HEAT OF ABS./REJ.	SEER COP	GPM	EWT	LWT	EAT	PRESSURE DROP IN FEET
COOLING										
HEATING										
ELECTRICAL DATA			BLOWER FLA		COMPRESSOR		MIN. CKT. AMPACITY		MAX. FUSE OR HACR SIZE	
VOLTAGE	PHASE		FLA	RLA	LRA					
208/230	3		16.6/14.4	38.5	229.00		111.0/109.0			125
460	3		7.2	17.8	116.00		51.1			60
BLOWER PERFORMANCE						INSTALLED WEIGHT				
EXT. STATIC PRES. I.W.G.						lbs.				
CFM						kg.				

**DIMENSIONS**

**AIR FLOW PATTERNS**



Shaded Area Indicates 3' Clearance must be left for access to Compressor and Electric Panel.

\*Add 6" for 25% outside air intake and 19" for economizer hoods

in.	1/4	3	40	79	98	101
cm.	1	8	102	201	249	257

FILTER SIZE	15"x31"	SHIPPING WGT.	1560 lbs.
	38x78 cm.		702 kg.

Continuing engineering research results in steady improvements. Therefore, these ratings and specifications are subject to change without notice. No one is authorized to reproduce or alter this document in any way without the written authorization of an officer of the company.

**802 SERIES  
ROOFTOP WATER SOURCE  
HEAT PUMP  
SIZE: 262S**



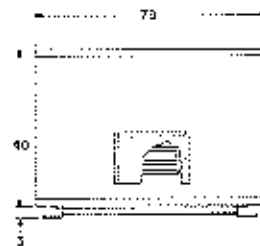
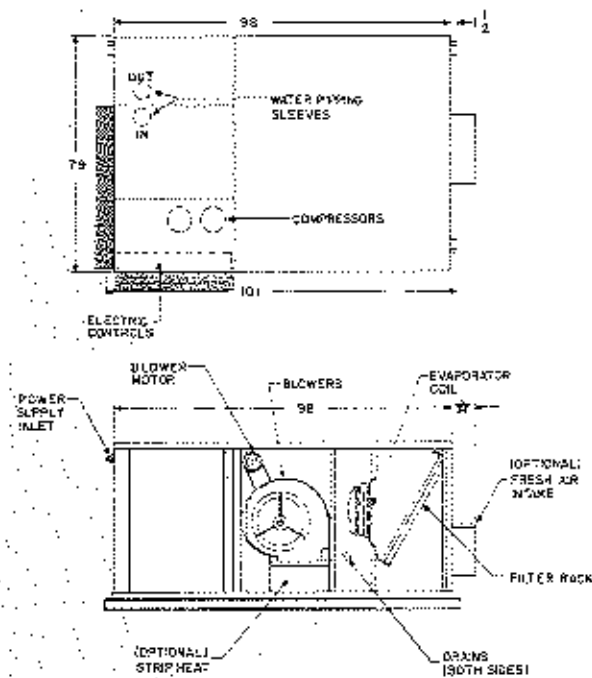
**ClimateMaster**  
A COMBINATION OF CHP CORP. AND  
FRIEDRICH™ CLIMATE MASTER, INC.

**TAG:** \_\_\_\_\_

JOB SCHEDULE	TOTAL BTUH	INPUT WATTS	SENSIBLE BTUH	BTUH HEAT OF ABS./REJ.	EER COP	GPM	EWT	LWT	EAT	PRESSURE DROP IN FEET
COOLING										
HEATING										
ELECTRICAL DATA		BLOWER		COMPRESSOR		MIN. CKT. AMPACITY		MAX. FUSE OR HACR SIZE		
VOLTAGE	PHASE	FLA	FLA	RLA	LRA					
208/230	3	11.3/9.8	38.5	229	103.0/101.0			125		
460	3	4.9	17.8	116	47.3			60		
BLOWER PERFORMANCE						INSTALLED WEIGHT				
EXT. STATIC PRES. I.W.G.						lbs.				
CFM						kg.				

**DIMENSIONS**

**AIR FLOW PATTERNS**



Shaded Area indicates 3' Clearance must be left for access to Compressor and Electric Panel.

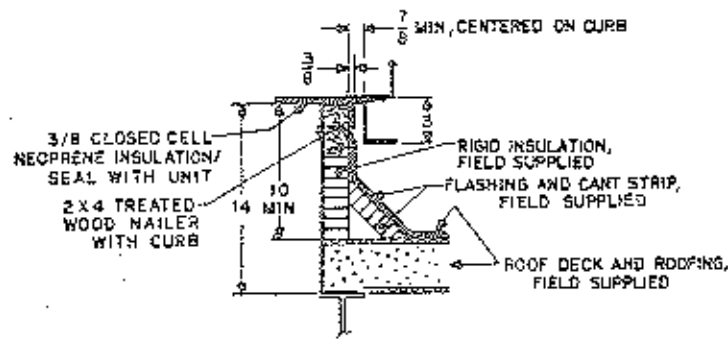
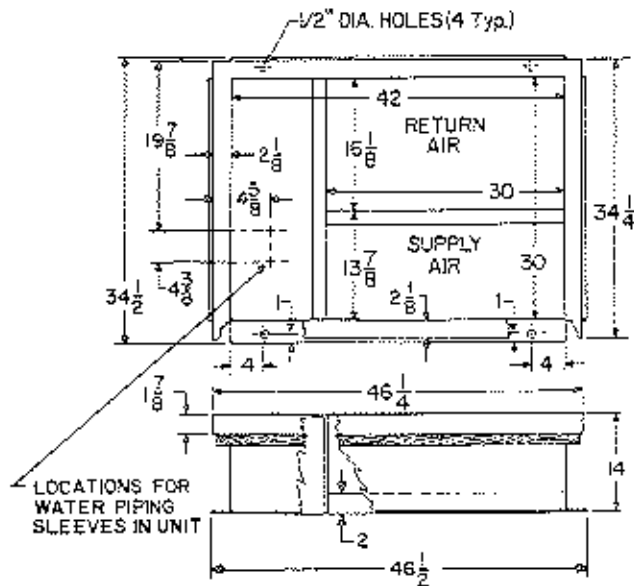
\*Add 6" for 25% outside air intake and 19" for economizer floods

in.	1/2	3	40	79	98	101
cm.	t	8	102	201	249	257

FILTER SIZE	15"x31" 38x78 cm.	SHIPPING WGT.	1560 lbs. 702 kg.
-------------	----------------------	---------------	----------------------

Continuing engineering research results in steady improvements. Therefore, these ratings and specifications are subject to change without notice. No one is authorized to reproduce or alter this document in any way without the written authorization of an officer of the company.





SECTION OF  
TYPICAL CURB INSTALLATION

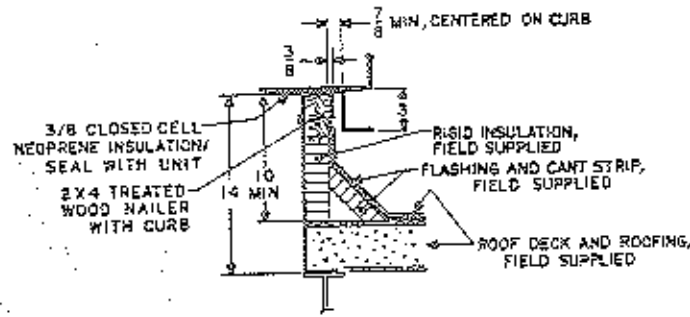
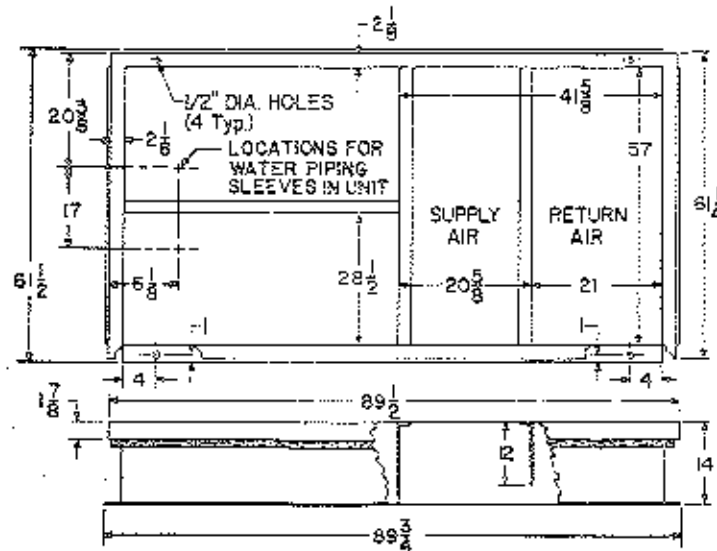
557 CURB



Continuing engineering research results in steady improvements. Therefore, these specifications are subject to change without notice.

Printed in U.S.A.

**ClimateMaster**  
A COMBINATION OF CHP CORP. AND FRIEDRICH™ CLIMATE MASTER, INC.



SECTION OF TYPICAL CURB INSTALLATION

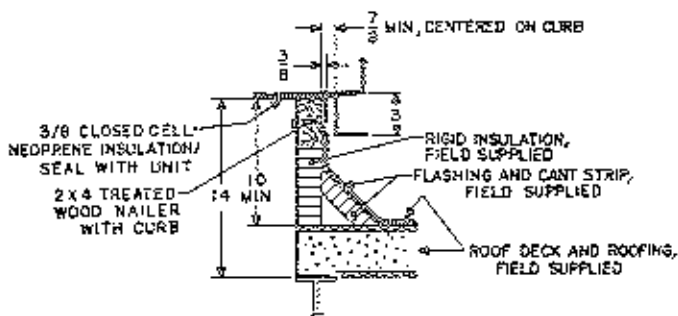
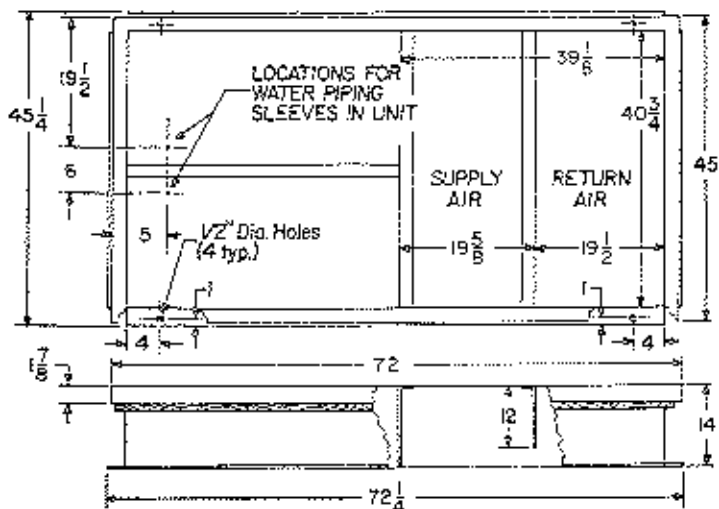
559 CURB



Continuing engineering research results in steady improvements. Therefore, these specifications are subject to change without notice.

Printed in U.S.A.





SECTION OF TYPICAL CURB INSTALLATION

563 CURB



Continuing engineering research results in steady improvements. Therefore, these specifications are subject to change without notice.

Printed in U.S.A.

**ClimateMaster**  
 A COMBINATION OF CHP CORR AND FRIEDRICH™ CLIMATE MASTER, INC.