

**801 SERIES  
WATER SOURCE  
HEAT PUMP CONSOLE**  
SIZE: 08 (48") L.H. PIPING



TAG: \_\_\_\_\_

JOB SCHEDULE	TOTAL BTUH	INPUT WATTS	SENSIBLE BTUH	BTUH HEAT OF ABS./REJ.	EER COP	GPM	EWT	LWT	EAT	PRESSURE DROP IN FEET
COOLING										
HEATING										

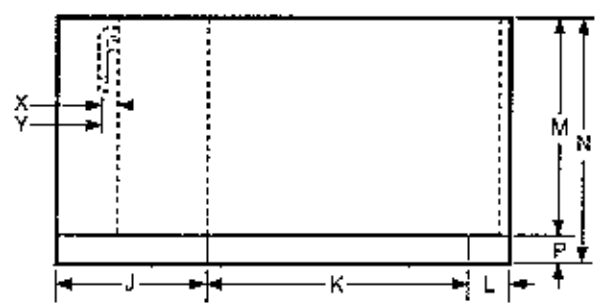
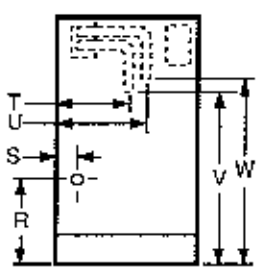
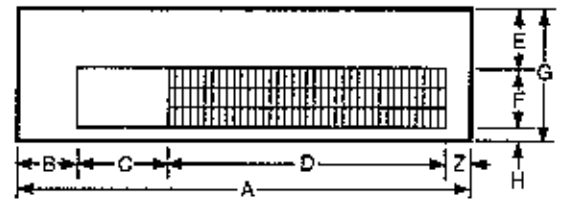
ELECTRICAL DATA		BLOWER	COMPRESSOR		HEATER WATTS	TOTAL FLA	MIN CKT AMPACITY	MAX. FUSE OR HACR SIZE
VOLTAGE	PHASE	FLA	RLA	LRA				
208/230	1/60	0.45	3.50	22.4		3.95	4.83	15
208/230	1/60	0.45	3.50	22.4	1000/1220	5.75	7.10	15
208/230	1/60	0.45	3.50	22.4	1510/1850	8.45	10.50	15
208/230	1/60	0.45	3.50	22.4	2000/2450	11.15	13.80	15
208/230	1/60	0.45	3.50	22.4	2880/3600	16.10	20.00	20
208/230	1/60	0.45	3.50	22.4	3800/4850	20.65	25.80	30
265	1/60	0.45	3.00	19.0		3.45	4.20	15
265	1/60	0.45	3.00	19.0	1000	4.25	5.20	15
265	1/60	0.45	3.00	19.0	1500	6.15	7.60	15
265	1/60	0.45	3.00	19.0	2000	8.00	9.90	15
265	1/60	0.45	3.00	19.0	3000	11.75	14.60	15
265	1/60	0.45	3.00	19.0	3700	14.40	17.90	20
200/240	1/50	0.45	3.00	19.0		3.45	4.20	15
200/240	1/50	0.45	3.00	19.0	961/1273	5.75	7.08	15
200/240	1/50	0.45	3.00	19.0	1451/1930	8.49	10.50	15
200/240	1/50	0.45	3.00	19.0	1923/2555	11.10	13.76	15
200/240	1/50	0.45	3.00	19.0	2846/3756	16.10	20.01	20
200/240	1/50	0.45	3.00	19.0	3654/4852	20.67	25.72	30

BLOWER PERFORMANCE			INSTALLED WEIGHT		
EXT. STATIC PRES. I.W.G.			lbs.		
CFM			kg.		

NOTE: "TOTAL FLA" and "MIN. CKT AMPACITY" are calculated at maximum possible condition caused by operation of either the compressor or electrical heater.

**DIMENSIONS**

Item	48" Cabinet	Item	48" Cabinet	Item	48" Cabinet
A	48" (122.0)	T	14 1/4" (35.2)	Y	3 3/4" (9.4)
B	5 1/2" (14.0)	U	31" (78.7)	Z	2 1/2" (6.4)
C	6 1/2" (16.5)	V	2 3/4" (7.0)		
D	31 1/2" (80.0)	W	21" (53.3)		
E	8 3/4" (22.1)	X	24" (61.0)		
F	5 3/4" (14.6)				
G	13" (33.0)				
H	1/2" (1.3)				



FILTER SIZE	10 3/4" x 30 3/4" x 3/8" (27.3 x 78.1 x 1.0)	SHIPPING WGT.	178 lbs. 80 kg.
-------------	---	---------------	--------------------

Continuing engineering research results in steady improvements. Therefore, these ratings and specifications are subject to change without notice. No one is authorized to reproduce or alter this document in any way without the written authorization of an officer of the company.

**801 SERIES  
WATER SOURCE  
HEAT PUMP CONSOLE**  
SIZE: 12 (48") L.H. PIPING

**ClimateMaster**

TAG: \_\_\_\_\_

JOB SCHEDULE	TOTAL BTUH	INPUT WATTS	SENSIBLE BTUH	BTUH HEAT OF ABS./REJ.	EER COP	GPM	EWT	LWT	EAT	PRESSURE DROP IN FEET
COOLING										
HEATING										

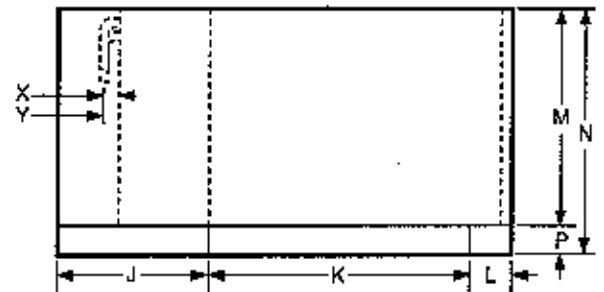
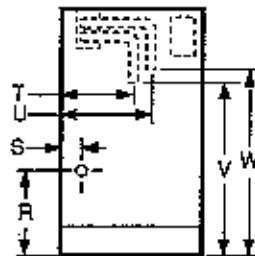
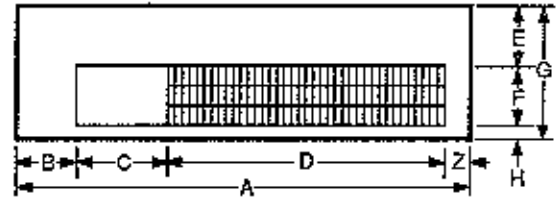
ELECTRICAL DATA		BLOWER	COMPRESSOR			HEATER WATTS	TOTAL FLA	MIN CKT AMPACITY	MAX. FUSE OR HACR SIZE
VOLTAGE	PHASE	FLA	RLA	LRA					
208/230	1/60	0.45	5.70	28.0		6.15	7.58	15	
208/230	1/60	0.45	5.70	28.0	1000/1220	6.15	7.58	15	
208/230	1/60	0.45	5.70	28.0	1510/1850	8.45	10.50	15	
208/230	1/60	0.45	5.70	28.0	2000/2450	11.15	13.80	15	
208/230	1/60	0.45	5.70	28.0	2980/3800	16.10	20.00	20	
208/230	1/60	0.45	5.70	28.0	3800/4850	20.65	25.80	30	
265	1/60	0.45	5.00	27.4		5.45	6.70	15	
265	1/60	0.45	5.00	27.4	1000	5.45	6.70	15	
265	1/60	0.45	5.00	27.4	1500	6.15	7.60	15	
265	1/60	0.45	5.00	27.4	2000	8.00	9.90	15	
265	1/60	0.45	5.00	27.4	3000	11.75	14.60	15	
265	1/60	0.45	5.00	27.4	3700	14.40	17.90	20	
200/240	1/50	0.45	5.00	27.4		5.45	6.70	15	
200/240	1/50	0.45	5.00	27.4	961/1273	5.75	7.08	15	
200/240	1/50	0.45	5.00	27.4	1451/1990	8.49	10.50	15	
200/240	1/50	0.45	5.00	27.4	1923/2556	11.10	13.78	15	
200/240	1/50	0.45	5.00	27.4	2846/3756	16.10	20.01	25	
200/240	1/50	0.45	5.00	27.4	3654/4852	20.67	25.72	30	

BLOWER PERFORMANCE		INSTALLED WEIGHT	
EXT. STATIC PRES. I.W.G.		lbs.	
CFM		kg.	

NOTE: "TOTAL FLA" and "MIN. CKT AMPACITY" are calculated at maximum possible condition caused by operation of either the compressor or electrical heater.

**DIMENSIONS**

Item	48" Cabinet	Item	48" Cabinet	Item	48" Cabinet
A	45" (122.0)	J	14 1/4" (36.2)	Y	5 3/4" (14.6)
B	5 1/2" (14.0)	K	31" (78.7)	U	7" (17.8)
C	8 1/2" (21.6)	L	2 3/4" (7.0)	V	17" (43.2)
D	31 1/2" (80.0)	M	21" (53.3)	W	18" (45.7)
E	8 3/4" (22.1)	N	24" (61.0)	X	1 1/2" (3.8)
F	5 3/4" (14.6)	P	3" (7.6)	Z	9 1/2" (24.1)
G	13" (33.0)	R	4 7/8" (12.4)		
H	1 1/2" (3.8)	S	1 3/4" (4.4)		



FILTER SIZE	10 3/4" x 30 3/4" x 3/8" (27.9 x 78.1 x 1.0)	SHIPPING WGT.	195 lbs. 88 kg.
-------------	---	---------------	--------------------

Continuing engineering research results in steady improvements. Therefore, these ratings and specifications are subject to change without notice. No one is authorized to reproduce or alter this document in any way without the written authorization of an officer of the company.

**801 SERIES  
WATER SOURCE  
HEAT PUMP CONSOLE  
SIZE: 12 (48") R.H. PIPING**

**ClimateMaster**

**TAG:** \_\_\_\_\_

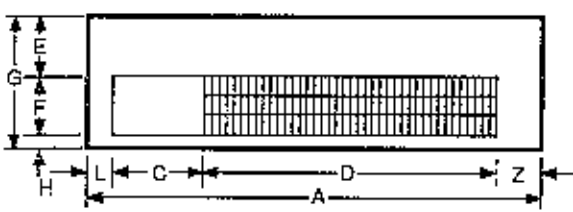
JOB SCHEDULE	TOTAL BTUH	INPUT WATTS	SENSIBLE BTUH	BTUH HEAT OF ABS./REJ.	EER COP	GPM	EWT	LWT	EAT	PRESSURE DROP IN FEET
COOLING										
HEATING										

ELECTRICAL DATA		BLOWER	COMPRESSOR		HEATER WATTS	TOTAL FLA	MIN CKT AMPACITY	MAX. FUSE OR HACR SIZE
VOLTAGE	PHASE	FLA	RLA	LRA				
208/230	1/60	0.45	5.70	28.0		6.15	7.58	15
208/230	1/60	0.45	5.70	28.0	1000/1220	6.15	7.58	15
208/230	1/60	0.45	5.70	28.0	1510/1850	8.45	10.50	15
208/230	1/60	0.45	5.70	28.0	2000/2450	11.15	13.80	15
208/230	1/60	0.45	5.70	28.0	2950/3600	16.10	20.00	20
208/230	1/60	0.45	5.70	28.0	3800/4650	20.65	25.80	30
265	1/60	0.45	5.00	27.4		5.45	6.70	15
265	1/60	0.45	5.00	27.4	1000	5.45	6.70	15
285	1/60	0.45	5.00	27.4	1500	6.15	7.60	15
285	1/60	0.45	5.00	27.4	2000	8.00	9.90	15
265	1/60	0.45	5.00	27.4	3000	11.75	14.60	15
265	1/60	0.45	5.00	27.4	3700	14.40	17.80	20
200/240	1/50	0.45	5.00	27.4		5.45	6.70	15
200/240	1/50	0.45	5.00	27.4	951/1273	5.75	7.08	15
200/240	1/50	0.45	5.00	27.4	1451/1930	8.49	10.50	15
200/240	1/50	0.45	5.00	27.4	1923/2556	11.10	13.76	15
200/240	1/50	0.45	5.00	27.4	2846/3756	16.10	20.01	25
200/240	1/50	0.45	5.00	27.4	3654/4852	20.67	25.72	30

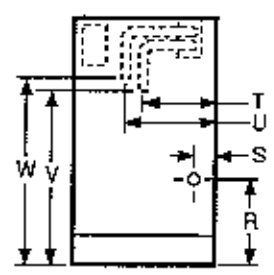
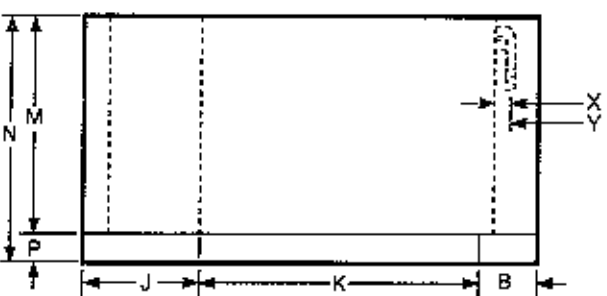
BLOWER PERFORMANCE		INSTALLED WEIGHT	
EXT. STATIC PRES. I.W.G.		lbs.	
CFM		kg.	

NOTE: "TOTAL FLA" and "MIN. CKT AMPACITY" are calculated at maximum possible condition caused by operation of either the compressor or electrical heater.

**DIMENSIONS**



Item	48" Cabinet	Item	48" Cabinet	Item	48" Cabinet
A	48" (122.0)	J	12" (30.5)	T	5 3/4" (14.3)
B	5" (12.7)	K	31" (79.7)	U	7" (17.8)
C	8 1/2" (21.6)	L	2 1/2" (6.4)	V	17" (43.2)
D	31 1/2" (80.0)	M	21" (53.3)	W	18" (45.7)
E	6 3/4" (17.1)	N	24" (61.0)	X	1 1/8" (3.8)
F	5 3/4" (14.3)	P	3" (7.6)	Y	3 1/2" (9.9)
G	13" (33.0)	R	4 7/8" (12.4)	Z	5 1/2" (14.0)
H	1/2" (1.3)	S	1 3/4" (4.4)		



FILTER SIZE	10 3/4" x 30 3/4" x 3/8" (27.3 x 78.1 x 1.0)	SHIPPING WGT.	195 lbs. 88 kg.
-------------	---	---------------	--------------------

Continuing engineering research results in steady improvements. Therefore, these ratings and specifications are subject to change without notice. No one is authorized to reproduce or alter this document in any way without the written authorization of an officer of the company.

**801 SERIES  
WATER SOURCE  
HEAT PUMP CONSOLE**  
SIZE: 15 (52") L.H. PIPING

**ClimateMaster**

**TAG:** \_\_\_\_\_

JOB SCHEDULE	TOTAL BTUH	INPUT WATTS	SENSIBLE BTUH	BTUH HEAT OF ABS./REJ.	EER COP	GPM	EWT	LWT	EAT	PRESSURE DROP IN FEET
COOLING										
HEATING										

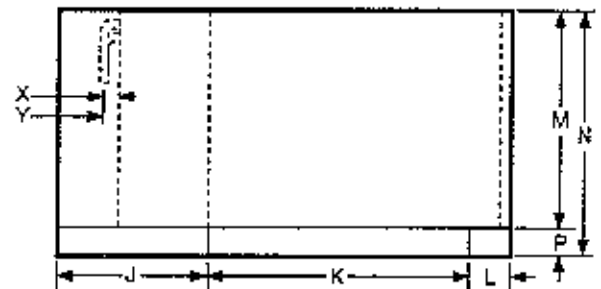
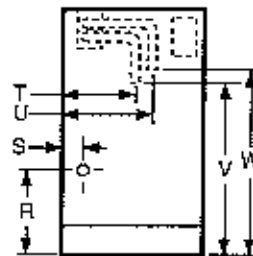
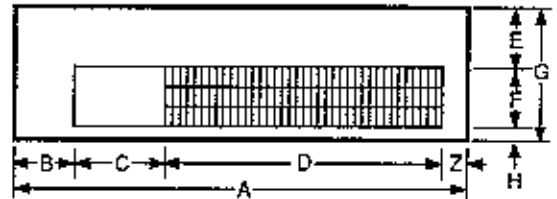
ELECTRICAL DATA		BLOWER	COMPRESSOR		HEATER WATTS	TOTAL FLA	MIN. CKT AMPACITY	MAX. FUSE OR HACR SIZE
VOLTAGE	PHASE	FLA	RLA	LRA				
208/230	1/60	0.55	6.20	36.0	1000/1220	6.75	8.30	15
208/230	1/60	0.55	6.20	36.0	1510/1850	6.75	8.30	15
208/230	1/60	0.55	6.20	36.0	2000/2450	8.45	10.50	15
208/230	1/60	0.55	6.20	36.0	2960/3600	11.15	13.80	15
208/230	1/60	0.55	6.20	36.0	3800/4650	16.10	20.00	20
265	1/60	0.50	5.40	33.0	1000	20.65	25.80	30
265	1/60	0.50	5.40	33.0	1500	5.90	7.30	15
265	1/60	0.50	5.40	33.0	2000	5.90	7.30	15
265	1/60	0.50	5.40	33.0	3000	6.15	7.60	15
265	1/60	0.50	5.40	33.0	3700	8.00	9.90	15
265	1/60	0.50	5.40	33.0	3700	11.75	14.60	15
200/240	1/50	0.50	5.40	33.0	1000	14.40	17.80	20
200/240	1/50	0.50	5.40	33.0	1500	5.90	7.30	15
200/240	1/50	0.50	5.40	33.0	961/1273	5.80	7.13	15
200/240	1/50	0.50	5.40	33.0	1451/1930	8.54	10.55	15
200/240	1/50	0.50	5.40	33.0	1923/2556	11.15	13.81	15
200/240	1/50	0.50	5.40	33.0	2846/3756	16.15	20.06	25
200/240	1/50	0.50	5.40	33.0	3664/4852	20.72	25.77	30

BLOWER PERFORMANCE		INSTALLED WEIGHT	
EXT. STATIC PRES. I.W.G.		lbs.	
CFM		kg.	

NOTE: "TOTAL FLA" and "MIN. CKT AMPACITY" are calculated at maximum possible condition caused by operation of either the compressor or electrical heater.

**DIMENSIONS**

Item	52" Cabinet	Item	52" Cabinet	Item	52" Cabinet
A	52" (132,1)	J	16 1/4" (41,3)	T	5 3/4" (14,6)
B	7 1/2" (19,1)	K	33" (83,8)	U	7" (17,8)
C	8 1/2" (21,6)	L	2 3/4" (7,0)	V	7" (43,2)
D	31 1/2" (80,3)	M	21" (53,3)	W	18" (45,7)
E	6 3/4" (17,1)	N	24" (61,3)	X	1 1/2" (3,8)
F	5 3/4" (14,8)	P	3" (7,6)	Y	3 1/2" (8,9)
G	13" (33,0)	R	4 7/8" (12,4)	Z	4 1/2" (11,4)
H	1/2" (1,3)	S	1 3/4" (4,4)		



FILTER SIZE	10 3/4" x 32 3/4" x 3/8" (27,3 x 83,2 x 1,0)	SHIPPING WGT.	200 lbs. 90 kg.
-------------	---	---------------	--------------------

Continuing engineering research results in steady improvements. Therefore, these ratings and specifications are subject to change without notice. No one is authorized to reproduce or alter this document in any way without the written authorization of an officer of the company.

**801 SERIES  
WATER SOURCE  
HEAT PUMP CONSOLE  
SIZE: 15 (52") R.H. PIPING**



**TAG:** \_\_\_\_\_

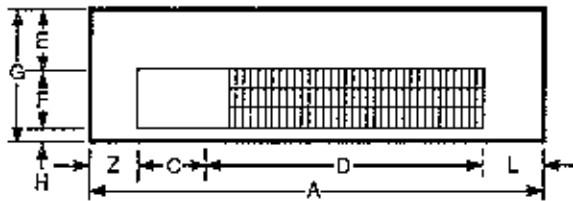
JOB SCHEDULE	TOTAL BTUH	INPUT WATTS	SENSIBLE BTUH	BTUH HEAT OF ABS./REJ.	EER COP	GPM	EWT	LWT	EAT	PRESSURE DROP IN FEET
COOLING										
HEATING										

ELECTRICAL DATA		BLOWER	COMPRESSOR			HEATER WATTS	TOTAL FLA	MIN. CKT AMPACITY	MAX. FUSE OR HACR SIZE
VOLTAGE	PHASE	FLA	RLA	LRA					
208/230	1/60	0.55	6.20	36.0		6.75	8.30	15	
208/230	1/60	0.55	6.20	36.0	1000/220	6.75	8.30	15	
208/230	1/60	0.55	6.20	36.0	1510/350	8.45	10.50	15	
208/230	1/60	0.55	6.20	36.0	2000/2450	11.15	13.80	15	
208/230	1/60	0.55	6.20	36.0	2950/3500	16.10	20.00	20	
208/230	1/60	0.55	6.20	36.0	3800/4650	20.65	25.80	30	
265	1/60	0.50	5.40	33.0		5.90	7.30	15	
265	1/60	0.50	5.40	33.0	1000	5.90	7.30	15	
265	1/60	0.50	5.40	33.0	1500	6.15	7.60	15	
265	1/60	0.50	5.40	33.0	2000	8.00	9.90	15	
265	1/60	0.50	5.40	33.0	3000	11.75	14.60	15	
265	1/60	0.50	5.40	33.0	3700	14.40	17.90	20	
200/240	1/50	0.50	5.40	33.0		5.90	7.30	15	
200/240	1/50	0.50	5.40	33.0	961/1273	5.80	7.13	15	
200/240	1/50	0.50	5.40	33.0	1451/1930	8.54	10.55	15	
200/240	1/50	0.50	5.40	33.0	1923/2556	11.15	13.81	15	
200/240	1/50	0.50	5.40	33.0	2846/3756	16.15	20.06	25	
200/240	1/50	0.50	5.40	33.0	3854/4862	20.72	25.77	30	

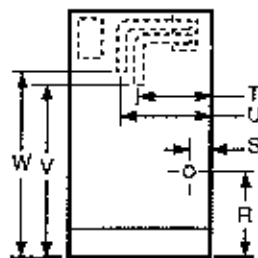
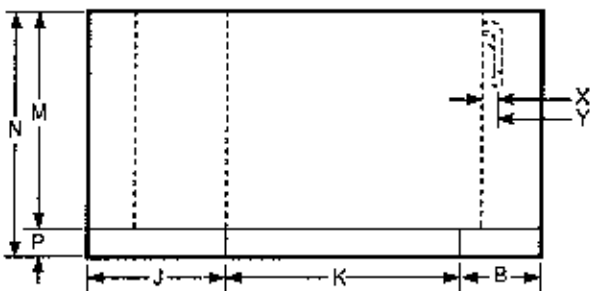
BLOWER PERFORMANCE		INSTALLED WEIGHT	
EXT. STATIC PRES. I.W.G.		lbs.	
CFM		kg.	

NOTE: "TOTAL FLA" and "MIN. CKT AMPACITY" are calculated at maximum possible condition caused by operation of either the compressor or electrical heater.

**DIMENSIONS**



Item	52" Cabinet	Item	52" Cabinet	Item	52" Cabinet
A	53" (132,1)	J	12" (30,5)	T	5 3/4" (14,8)
B	7" (17,8)	K	33" (83,8)	U	7" (17,8)
C	5 1/2" (21,8)	L	7 1/2" (19,1)	V	17" (43,2)
D	31 1/2" (80,3)	M	21" (53,3)	W	18" (45,7)
E	6 3/4" (17,1)	N	34" (86,6)	X	1 1/2" (3,8)
F	5 3/4" (14,6)	P	3" (7,6)	Y	3 1/2" (8,9)
G	3" (76,0)	R	4 7/8" (12,4)	Z	4 1/2" (11,4)
H	1 1/2" (3,8)	S	2 3/4" (6,4)		



FILTER SIZE	10 3/4" x 32 3/4" x 3/8" (27,3 x 83,2 x 1,0)	SHIPPING WGT.	200 lbs. 90 kg.
-------------	---	---------------	--------------------

Continuing engineering research results in steady improvements. Therefore, these ratings and specifications are subject to change without notice. No one is authorized to reproduce or alter this document in any way without the written authorization of an officer of the company.

**801 SERIES  
WATER SOURCE  
HEAT PUMP CONSOLE**  
SIZE: 19 (52") L.H. PIPING

**ClimateMaster**

TAG: \_\_\_\_\_

JOB SCHEDULE	TOTAL BTUH	INPUT WATTS	SENSIBLE BTUH	BTUH HEAT OF ABS./REJ.	EER COP	GPM	EWT	LWT	EAT	PRESSURE DROP IN FEET
COOLING										
HEATING										

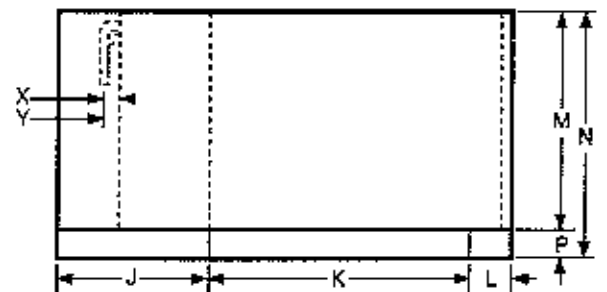
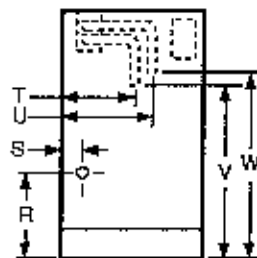
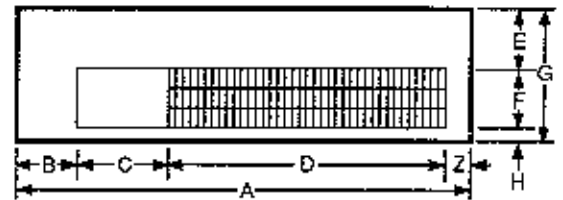
ELECTRICAL DATA		BLOWER	COMPRESSOR		HEATER WATTS	TOTAL FLA	MIN. CKT AMPACITY	MAX. FUSE OR HACR SIZE
VOLTAGE	PHASE	FLA	FLA	LRA				
208/230	1/60	0.55	7.80	40.6		8.35	10.30	15
308/230	1/60	0.55	7.80	40.6	1000/1220	8.35	10.30	15
208/230	1/60	0.55	7.80	40.6	1510/1830	8.35	10.50	15
208/230	1/60	0.55	7.80	40.6	2000/2450	8.45	13.80	15
208/230	1/60	0.55	7.80	40.6	2950/3600	11.15	20.00	20
208/230	1/60	0.50	7.80	40.6	3800/4650	16.10	25.80	30
265	1/60	0.50	6.70	34.0		7.20	8.90	15
265	1/60	0.55	6.70	34.0	1000	7.20	8.90	15
265	1/60	0.50	6.70	34.0	1500	7.20	8.90	15
285	1/60	0.50	6.70	34.0	2000	8.00	9.90	15
285	1/60	0.50	6.70	34.0	3000	11.75	14.60	15
285	1/60	0.50	6.70	34.0	3700	14.40	17.90	20
200/240	1/50	0.50	6.70	34.0		7.20	8.90	15
200/240	1/50	0.50	6.70	34.0	951/1273	5.80	7.13	15
200/240	1/50	0.50	6.70	34.0	1451/1930	8.54	10.55	15
200/240	1/50	0.50	6.70	34.0	1923/2556	11.15	13.81	15
200/240	1/50	0.50	6.70	34.0	2846/3756	16.15	20.06	25
200/240	1/50	0.50	6.70	34.0	3854/4852	20.72	25.77	30

BLOWER PERFORMANCE		INSTALLED WEIGHT	
EXT. STATIC PRES. I.W.G.		lbs.	
CFM		kg.	

NOTE: "TOTAL FLA" and "MIN. CKT AMPACITY" are calculated at maximum possible condition caused by operation of either the compressor or electrical heater.

**DIMENSIONS**

Item	52" Cabinet	Item	52" Cabinet	Item	52" Cabinet
A	52" (132.3)	J	6 1/4" (61.9)	T	5 3/4" (14.6)
B	7 1/2" (19.1)	K	33" (85.8)	U	7" (17.8)
C	6 1/2" (21.8)	L	2 3/4" (7.6)	V	17" (43.2)
D	31 1/2" (80.0)	M	21" (53.3)	W	13" (45.7)
E	8 3/4" (17.1)	N	24" (61.0)	X	1 1/2" (3.8)
F	5 3/4" (14.6)	P	3" (7.6)	Y	3 1/2" (8.9)
G	19" (49.5)	R	4 7/8" (12.4)	Z	4 1/2" (11.4)
H	1/2" (1.3)	S	1 3/4" (4.4)		



FILTER SIZE	10 3/4" x 32 3/4" x 3/8" (27.3 x 83.2 x 1.0)	SHIPPING WGT.	220 lbs. 99 kg.
-------------	---	---------------	--------------------

Continuing engineering research results in steady improvements. Therefore, these ratings and specifications are subject to change without notice. No one is authorized to reproduce or alter this document in any way without the written authorization of an officer of the company.

**801 SERIES  
WATER SOURCE  
HEAT PUMP CONSOLE  
SIZE: 19 (52") R.H. PIPING**

**ClimateMaster**

**TAG:** \_\_\_\_\_

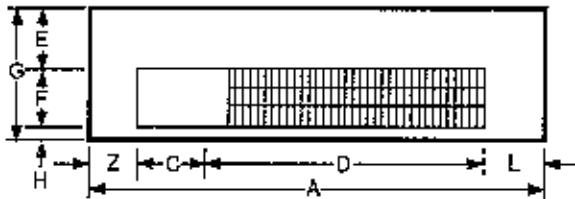
JOB SCHEDULE	TOTAL BTUH	INPUT WATTS	SENSIBLE BTUH	BTUH HEAT OF ABS./REJ.	EER COP	GPM	EWT	LWT	EAT	PRESSURE DROP IN FEET
COOLING										
HEATING										

ELECTRICAL DATA		BLOWER	COMPRESSOR		HEATER WATTS	TOTAL FLA	MIN CKT AMPACITY	MAX. FUSE OR HACR SIZE
VOLTAGE	PHASE	FLA	FLA	LRA				
208/230	1/60	0.55	7.80	40.6	1000/1220	8.35	10.30	15
208/230	1/60	0.55	7.80	40.6	1510/1850	8.35	10.30	15
208/230	1/60	0.55	7.80	40.6	2000/2450	8.45	13.80	15
208/230	1/60	0.55	7.80	40.6	2960/3600	11.15	20.00	20
208/230	1/60	0.55	7.80	40.6	3800/4650	16.10	25.80	30
265	1/60	0.50	6.70	34.0	1000	7.20	8.90	15
265	1/60	0.50	6.70	34.0	1500	7.20	8.90	15
265	1/60	0.50	6.70	34.0	2000	8.00	9.90	15
265	1/60	0.50	6.70	34.0	3000	11.75	14.60	15
265	1/60	0.50	6.70	34.0	3700	14.40	17.80	20
200/240	1/50	0.50	6.70	34.0	1000	7.20	8.90	15
200/240	1/50	0.50	6.70	34.0	961/1273	5.80	7.13	15
200/240	1/50	0.50	6.70	34.0	1451/1930	8.54	10.55	15
200/240	1/50	0.50	6.70	34.0	1929/2556	11.15	13.81	15
200/240	1/50	0.50	6.70	34.0	2848/3756	16.15	20.06	25
200/240	1/50	0.50	6.70	34.0	3654/4852	20.72	25.77	30

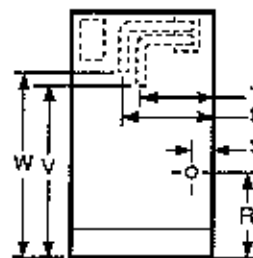
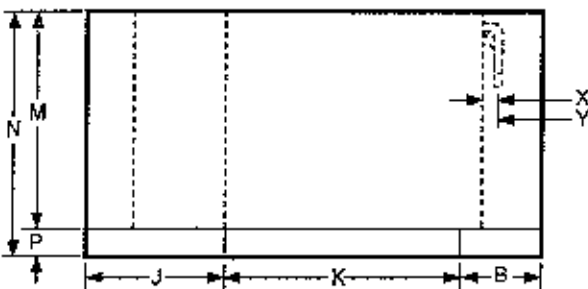
BLOWER PERFORMANCE		INSTALLED WEIGHT	
EXT. STATIC PRES. I.W.G.		lbs.	
CFM		kg.	

NOTE: "TOTAL FLA" and "MIN. CKT AMPACITY" are calculated at maximum possible condition caused by operation of either the compressor or electrical heater.

**DIMENSIONS**



Item	52" Cabinet	Item	52" Cabinet	Item	52" Cabinet
A	52" (132.1)	J	12" (30.5)	T	5 3/4" (14.6)
B	7" (17.8)	K	93" (236.8)	U	7" (17.8)
C	8 1/2" (21.6)	L	7 1/2" (19.1)	V	17" (43.2)
D	31 1/2" (80.0)	M	21" (53.3)	W	18" (45.7)
E	6 3/4" (17.1)	N	22" (56.0)	X	1 1/2" (3.8)
F	5 3/4" (14.6)	P	3" (7.6)	Y	3 1/2" (8.9)
G	13" (33.0)	R	4 7/8" (12.4)	Z	4 1/2" (11.4)
H	12" (30.5)	S	1 3/4" (4.4)		



FILTER SIZE	10 3/4" x 32 3/4" x 3/8" (27.3 x 83.2 x 1.0)	SHIPPING WGT.	220 lbs. 99 kg.
-------------	---	---------------	--------------------

Continuing engineering research results in steady improvements. Therefore, these ratings and specifications are subject to change without notice. No one is authorized to reproduce or alter this document in any way without the written authorization of an officer of the company.

**801 SERIES  
WATER SOURCE  
HEAT PUMP CONSOLE  
SIZE: 12 (48") L.H. PIPING**



**TAG:** \_\_\_\_\_

JOB SCHEDULE	TOTAL BTUH	INPUT WATTS	SENSIBLE BTUH	BTUH HEAT OF ABS./REJ.	EER COP	GPM	EWT	LWT	EAT	PRESSURE DROP IN FEET
COOLING										
HEATING										

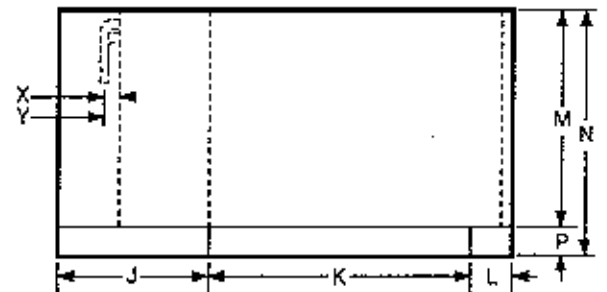
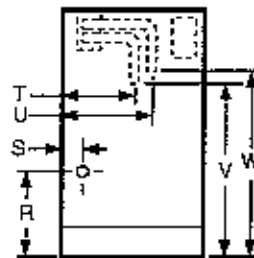
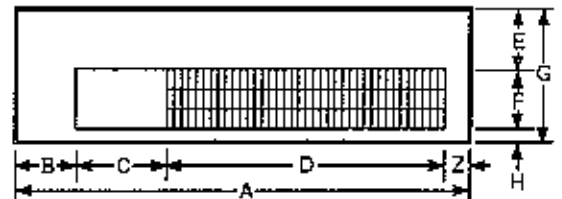
ELECTRICAL DATA		BLOWER	COMPRESSOR		HEATER WATTS	TOTAL FLA	MIN CKT AMPACITY	MAX FUSE OR HACR SIZE
VOLTAGE	PHASE	FLA	RLA	LRA				
208/230	1/60	0.45	5.70	28.0		6.15	7.58	15
208/230	1/60	0.45	5.70	28.0	1000/1220	6.15	7.58	15
208/230	1/60	0.45	5.70	28.0	1510/1850	8.45	10.50	15
208/230	1/60	0.45	5.70	28.0	2000/2450	11.15	13.80	15
208/230	1/60	0.45	5.70	28.0	2960/3600	16.10	20.00	20
208/230	1/60	0.45	5.70	28.0	3600/4650	20.65	25.80	30
265	1/60	0.45	5.00	27.4		5.45	6.70	15
265	1/60	0.45	5.00	27.4	1000	5.45	6.70	15
265	1/60	0.45	5.00	27.4	1500	6.15	7.60	15
265	1/60	0.45	5.00	27.4	2000	8.00	9.90	15
265	1/60	0.45	5.00	27.4	3000	11.75	14.60	15
265	1/60	0.45	5.00	27.4	3700	14.40	17.90	20
200/240	1/50	0.45	5.00	27.4		5.45	6.70	15
200/240	1/50	0.45	5.00	27.4	961/1273	5.75	7.08	15
200/240	1/50	0.45	5.00	27.4	1451/1930	8.49	10.50	15
200/240	1/50	0.45	5.00	27.4	1923/2556	11.10	13.78	15
200/240	1/50	0.45	5.00	27.4	2848/3756	16.10	20.01	25
200/240	1/50	0.45	5.00	27.4	3654/4852	20.67	25.72	30

BLOWER PERFORMANCE		INSTALLED WEIGHT	
EXT. STATIC PRES. I.W.G.		lbs.	
CFM		kg.	

NOTE: "TOTAL FLA" and "MIN. CKT AMPACITY" are calculated at maximum possible condition caused by operation of either the compressor or electrical heater.

**DIMENSIONS**

Item	48" Cabinet	Item	48" Cabinet	Item	48" Cabinet
A	48" (122.0)	J	14 1/4" (36.2)	T	5 3/4" (14.6)
B	5 1/2" (14.0)	X	31" (78.7)	U	7" (17.8)
C	6 1/2" (16.5)	L	2 3/4" (7.0)	V	17" (43.2)
D	31 1/2" (80.0)	M	21" (53.3)	W	16" (40.7)
E	6 3/4" (17.1)	N	24" (61.0)	X	1 1/2" (3.8)
F	6 3/4" (17.1)	P	3" (7.6)	Y	3 1/2" (8.9)
G	12" (30.5)	R	4 7/8" (12.4)	Z	2 1/2" (6.4)
H	12" (30.5)	S	1 3/4" (4.4)		



FILTER SIZE <u>10 3/4" x 30 3/4" x 3/8"</u> (27.3 x 78.1 x 1.0)	SHIPPING WGT. <u>135 lbs.</u> 85 kg.
--	---

Continuing engineering research results in steady improvements. Therefore, these ratings and specifications are subject to change without notice. No one is authorized to reproduce or alter this document in any way without the written authorization of an officer of the company.



**801 SERIES  
WATER SOURCE  
HEAT PUMP CONSOLE**  
SIZE: 08 (52") R.H. PIPING



**TAG:** \_\_\_\_\_

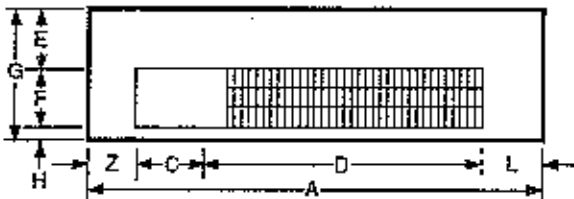
JOB SCHEDULE	TOTAL BTUH	INPUT WATTS	SENSIBLE BTUH	BTUH HEAT OF ABS./REJ.	EER COP	GPM	EWT	LWT	EAT	PRESSURE DROP IN FEET
COOLING										
HEATING										

ELECTRICAL DATA		BLOWER	COMPRESSOR		HEATER WATTS	TOTAL FLA	MIN. CKT AMPACITY	MAX. FUSE OR HACR SIZE
VOLTAGE	PHASE	FLA	FLA	LRA				
208/230	1/60	0.45	3.50	22.4		3.95	4.83	15
208/230	1/60	0.45	3.50	22.4	1000/1220	5.75	7.10	15
208/230	1/60	0.45	3.50	22.4	1510/1850	8.45	10.50	15
208/230	1/60	0.45	3.50	22.4	2000/2450	11.15	13.80	15
208/230	1/60	0.45	3.50	22.4	2980/3800	16.10	20.00	20
208/230	1/60	0.45	3.50	22.4	3800/4650	20.65	25.80	30
265	1/60	0.45	3.00	19.0		3.45	4.20	15
265	1/60	0.45	3.00	19.0	1000	4.25	5.20	15
265	1/60	0.45	3.00	19.0	1500	6.15	7.60	15
265	1/60	0.45	3.00	19.0	2000	8.00	9.90	15
265	1/60	0.45	3.00	19.0	3000	11.75	14.60	15
265	1/60	0.45	3.00	19.0	3700	14.40	17.90	20
200/240	1/50	0.45	3.00	19.0		3.45	4.20	15
200/240	1/50	0.45	3.00	19.0	961/1273	5.75	7.08	15
200/240	1/50	0.45	3.00	19.0	1451/1930	8.49	10.50	15
200/240	1/50	0.45	3.00	19.0	1929/2556	11.10	13.78	15
200/240	1/50	0.45	3.00	19.0	2848/3756	16.10	20.01	20
200/240	1/50	0.45	3.00	19.0	3854/4852	20.67	25.72	30

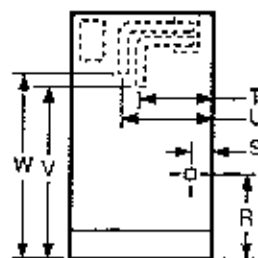
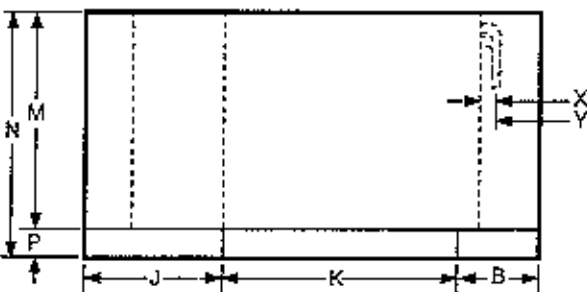
BLOWER PERFORMANCE		INSTALLED WEIGHT	
EXT. STATIC PRES. I.W.G.		lbs.	
CFM		kg.	

NOTE: "TOTAL FLA" and "MIN. CKT AMPACITY" are calculated at maximum possible condition caused by operation of either the compressor or electrical heater.

**DIMENSIONS**



Item	52" Cabinet	Item	52" Cabinet	Item	52" Cabinet
A	52" (132,1)	J	13 1/2" (34,3)	T	5 3/4" (14,3)
B	7 1/2" (19,3)	K	31" (78,7)	U	7" (17,8)
C	6 1/2" (21,5)	L	7 1/2" (19,1)	V	17" (43,2)
D	31 1/2" (80,0)	H	21" (53,3)	W	18" (45,7)
E	6 3/4" (17,1)	N	24" (61,0)	X	1 1/2" (3,8)
F	5 3/4" (14,6)	P	2" (7,6)	Y	5 1/2" (14,0)
G	13" (33,0)	R	4 7/8" (12,4)	Z	4 1/2" (11,4)
H	1/2" (1,3)	S	1 3/4" (4,4)		



FILTER SIZE	10 3/4" x 30 3/4" x 3/8" (27,3 x 78,1 x 1,0)	SHIPPING WGT.	178 lbs. 80 kg.
-------------	---	---------------	--------------------

Continuing engineering research results in steady improvements. Therefore, these ratings and specifications are subject to change without notice. No one is authorized to reproduce or alter this document in any way without the written authorization of an officer of the company.

**801 SERIES  
WATER SOURCE  
HEAT PUMP CONSOLE**  
SIZE: 10 (52") L.H. PIPING



TAG: \_\_\_\_\_

JOB SCHEDULE	TOTAL BTUH	INPUT WATTS	SENSIBLE BTUH	BTUH HEAT OF ABS./REJ.	EER COP	GPM	EWT	LWT	EAT	PRESSURE DROP IN FEET
COOLING										
HEATING										

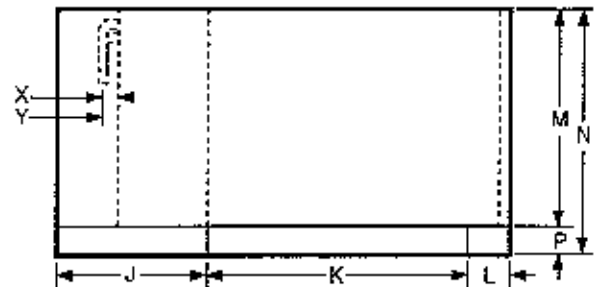
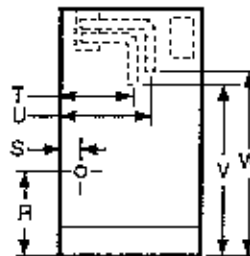
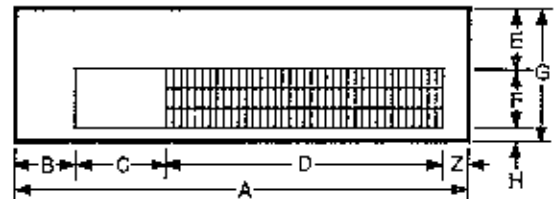
ELECTRICAL DATA		BLOWER	COMPRESSOR		HEATER WATTS	TOTAL FLA	MIN. CKT AMPACITY	MAX. FUSE OR HACR SIZE
VOLTAGE	PHASE	FLA	RLA	LRA				
208/230	1/60	0.45	4.40	21.3	1000/1220	4.85	5.95	15
208/230	1/60	0.45	4.40	21.3	1000/1220	5.75	7.10	15
208/230	1/60	0.45	4.40	21.3	1510/1850	8.45	10.50	15
208/230	1/60	0.45	4.40	21.3	2000/2450	11.15	13.80	15
208/230	1/60	0.45	4.40	21.3	2960/3600	16.10	20.00	20
208/230	1/60	0.45	4.40	21.3	3800/4650	20.65	25.80	30
285	1/60	0.45	3.90	22.3	1000	4.35	5.40	15
285	1/60	0.45	3.90	22.3	1500	6.15	7.60	15
285	1/60	0.45	3.90	22.3	2000	8.00	9.90	15
285	1/60	0.45	3.90	22.3	3000	11.75	14.60	15
285	1/60	0.45	3.90	22.3	3700	14.40	17.90	20
200/240	1/50	0.45	3.90	22.3	1000	4.35	5.40	15
200/240	1/50	0.45	3.90	22.3	961/1273	5.75	7.08	15
200/240	1/50	0.45	3.90	22.3	1451/1930	8.49	10.50	15
200/240	1/50	0.45	3.90	22.3	1923/2556	11.10	13.76	15
200/240	1/50	0.45	3.90	22.3	2846/3756	16.10	20.01	25
200/240	1/50	0.45	3.90	22.3	3654/4852	20.87	25.72	30

BLOWER PERFORMANCE		INSTALLED WEIGHT	
EXT. STATIC PRES. I.W.G.		lbs.	
CFM		kg.	

NOTE: "TOTAL FLA" and "MIN. CKT AMPACITY" are calculated at maximum possible condition caused by operation of either the compressor or electrical heater.

**DIMENSIONS**

Item	52" Cabinet	Item	52" Cabinet	Item	52" Cabinet
A	52" (132,1)	J	18 3/4" (47,3)	I	5 3/4" (14,6)
B	7 1/2" (19,1)	K	31" (78,7)	U	7" (17,8)
C	8 1/2" (21,6)	L	43 3/4" (112,1)	V	17" (43,2)
D	31 1/2" (80,0)	M	21" (53,3)	W	7 3/8" (18,7)
E	8 3/4" (22,1)	N	24" (61,0)	X	1 1/2" (3,8)
F	5 3/4" (14,6)	P	3" (7,6)	Y	5 1/2" (14,0)
G	13" (33,0)	R	47 5/8" (12,4)	Z	4 1/2" (11,4)
H	1/2" (1,3)	S	13 3/4" (34,9)		



FILTER SIZE	10 3/4" x 30 3/4" x 3/8" (27,3 x 78,1 x 1,0)	SHIPPING WGT.	180 lbs. 81 kg.
-------------	---	---------------	--------------------

Continuing engineering research results in steady improvements. Therefore, these ratings and specifications are subject to change without notice. No one is authorized to reproduce or alter this document in any way without the written authorization of an officer of the company.

**801 SERIES  
WATER SOURCE  
HEAT PUMP CONSOLE**  
SIZE: 10 (52") L.H. PIPING



TAG: \_\_\_\_\_

JOB SCHEDULE	TOTAL BTUH	INPUT WATTS	SENSIBLE BTUH	BTUH HEAT OF ABS./REJ.	EER COP	GPM	EWT	LWT	EAT	PRESSURE DROP IN FEET
COOLING										
HEATING										

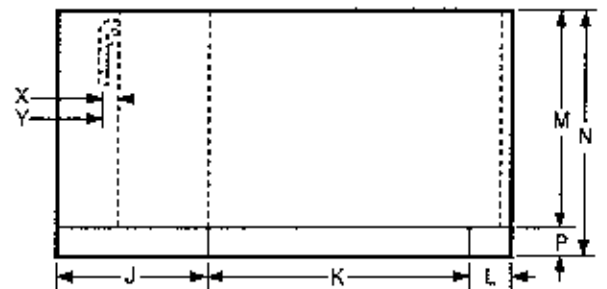
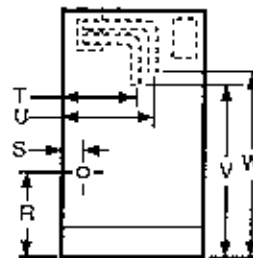
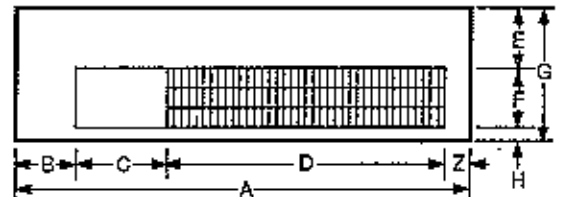
ELECTRICAL DATA		BLOWER	COMPRESSOR		HEATER WATTS	TOTAL FLA	MIN CKT AMPACITY	MAX. FUSE OR HACR SIZE
VOLTAGE	PHASE	FLA	RLA	LRA				
208/230	1/60	0.45	4.40	21.3	1000/1220	4.85	5.95	15
208/230	1/60	0.45	4.40	21.3	1000/1220	5.75	7.10	15
208/230	1/60	0.45	4.40	21.3	1510/1850	8.45	10.50	15
208/230	1/60	0.45	4.40	21.3	2000/2450	11.15	13.80	15
208/230	1/60	0.45	4.40	21.3	2880/3600	16.10	20.00	20
208/230	1/60	0.45	4.40	21.3	3800/4650	20.65	25.80	30
265	1/80	0.45	3.90	22.3	1000	4.35	5.40	15
265	1/60	0.45	3.90	22.3	1000	4.35	5.40	15
265	1/80	0.45	3.90	22.3	1500	6.15	7.60	15
265	1/60	0.45	3.90	22.3	2000	8.00	9.90	15
265	1/80	0.45	3.90	22.3	3000	11.75	14.60	15
265	1/60	0.45	3.90	22.3	3700	14.40	17.90	20
200/240	1/50	0.45	3.90	22.3	1000	4.35	5.40	15
200/240	1/50	0.45	3.90	22.3	981/1273	5.75	7.08	15
200/240	1/50	0.45	3.90	22.3	1451/1820	8.45	10.50	15
200/240	1/50	0.45	3.90	22.3	1923/2556	11.10	13.75	15
200/240	1/50	0.45	3.90	22.3	2848/3756	16.10	20.01	25
200/240	1/50	0.45	3.90	22.3	3654/4852	20.67	25.72	30

BLOWER PERFORMANCE		INSTALLED WEIGHT	
EXT. STATIC PRES. I.W.G.		lbs.	
CFM		kg.	

NOTE: "TOTAL FLA" and "MIN. CKT AMPACITY" are calculated at maximum possible condition caused by operation of either the compressor or electrical heater.

**DIMENSIONS**

Item	52" Cabinet	Item	52" Cabinet	Item	52" Cabinet
A	52" (132.1)	J	16 1/4" (41.3)	T	6 3/4" (14.6)
B	7 1/2" (19.7)	K	31" (78.7)	U	7" (17.5)
C	8 1/2" (21.6)	L	4 3/4" (12.1)	V	17" (43.2)
D	31 1/2" (80.3)	M	21" (53.3)	W	18" (45.7)
E	6 3/4" (17.7)	N	24" (61.0)	X	1 1/2" (3.8)
F	5 3/4" (14.6)	P	3" (7.6)	Y	5 1/2" (14.0)
G	13" (33.0)	R	4 7/8" (12.4)	Z	4 1/2" (11.4)
H	1 1/2" (1.3)	S	1 3/4" (4.4)		



FILTER SIZE	10 3/4" x 30 3/4" x 3/8" (27.3 x 78.1 x 1.0)	SHIPPING WGT.	180 lbs. 81 kg.
-------------	---	---------------	--------------------

Continuing engineering research results in steady improvements. Therefore, these ratings and specifications are subject to change without notice. No one is authorized to reproduce or alter this document in any way without the written authorization of an officer of the company.

**801 SERIES  
WATER SOURCE  
HEAT PUMP CONSOLE**  
SIZE: 10 (52") R.H. PIPING

**ClimateMaster**

TAG: \_\_\_\_\_

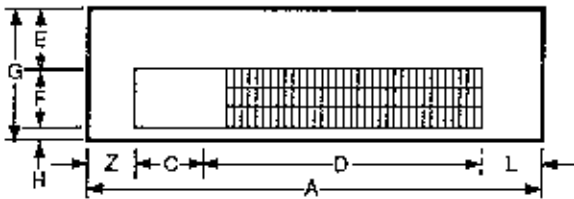
JOB SCHEDULE	TOTAL BTUH	INPUT WATTS	SENSIBLE BTUH	BTJH HEAT OF ABS./REJ.	EER COP	GPM	EWT	LWT	EAT	PRESSURE DROP IN FEET
COOLING										
HEATING										

ELECTRICAL DATA		BLOWER	COMPRESSOR		HEATER WATTS	TOTAL FLA	MIN CKT AMPACITY	MAX. FUSE OR HACR SIZE
VOLTAGE	PHASE	FLA	RLA	LRA				
208/230	1/80	0.45	4.40	21.3		4.85	5.95	15
208/230	1/80	0.45	4.40	21.3	1000/1220	5.75	7.10	15
208/230	1/80	0.45	4.40	21.3	1510/1850	8.45	10.50	15
208/230	1/80	0.45	4.40	21.3	2000/2450	11.15	13.80	15
208/230	1/80	0.45	4.40	21.3	2960/3600	16.10	20.00	20
208/230	1/80	0.45	4.40	21.3	3800/4650	20.85	25.80	30
265	1/60	0.45	3.90	22.3		4.35	5.40	15
265	1/60	0.45	3.90	22.3	1600	4.35	5.40	15
265	1/60	0.45	3.90	22.3	1500	6.15	7.60	15
265	1/60	0.45	3.90	22.3	2000	8.00	9.90	15
265	1/60	0.45	3.90	22.3	3000	11.75	14.60	15
265	1/60	0.45	3.90	22.3	3700	14.40	17.90	20
200/240	1/50	0.45	3.90	22.3		4.35	5.40	15
200/240	1/50	0.45	3.90	22.3	861/1273	5.75	7.08	15
200/240	1/50	0.45	3.90	22.3	1451/1930	8.49	10.50	15
200/240	1/50	0.45	3.90	22.3	1923/2558	11.10	13.78	15
200/240	1/50	0.45	3.90	22.3	2846/3756	16.10	20.01	25
200/240	1/50	0.45	3.90	22.3	3654/4852	20.87	25.72	30

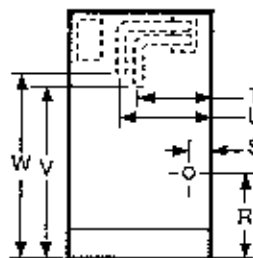
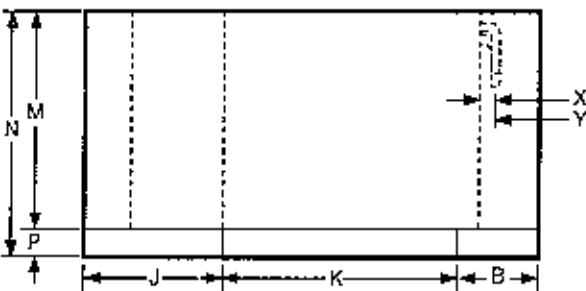
BLOWER PERFORMANCE		INSTALLED WEIGHT	
EXT. STATIC PRES. I.W.G.		lbs.	
CFM		kg.	

NOTE: "TOTAL FLA" and "MIN. CKT AMPACITY" are calculated at maximum possible condition caused by operation of either the compressor or electrical heater.

**DIMENSIONS**



Item	52" Cabinet	Item	52" Cabinet	Item	52" Cabinet
A	52" (132,1)	J	13 1/2" (34,3)	T	5 3/4" (14,6)
B	7 1/2" (19,1)	K	9 1" (23,3)	U	7" (17,8)
C	8 1/2" (21,6)	L	7 1/2" (19,1)	V	17" (43,2)
D	31 1/2" (80,0)	M	21" (53,3)	W	18" (45,7)
E	6 3/4" (17,1)	N	24" (61,0)	X	1 1/2" (3,8)
F	5 3/4" (14,3)	P	3" (7,6)	Y	5 1/2" (14,0)
G	13" (33,0)	Q	4 7/8" (12,4)	Z	4 1/2" (11,4)
H	12" (30,5)	S	7 3/4" (19,4)		



FILTER SIZE	10 3/4" x 30 3/4" x 3/8" (27,3 x 78,1 x 1,0)	SHIPPING WGT.	180 lbs. 81 kg.
-------------	---	---------------	--------------------

Continuing engineering research results in steady improvements. Therefore, these ratings and specifications are subject to change without notice. No one is authorized to reproduce or alter this document in any way without the written authorization of an officer of the company.

**801 SERIES  
WATER SOURCE  
HEAT PUMP CONSOLE**  
SIZE: 12 (52") L.H. PIPING

**ClimateMaster**

TAG: \_\_\_\_\_

JOB SCHEDULE	TOTAL BTUH	INPUT WATTS	SENSIBLE BTUH	BTUH HEAT OF ABS./REJ.	EER COP	GPM	EWT	LWT	EAT	PRESSURE DROP IN FEET
COOLING										
HEATING										

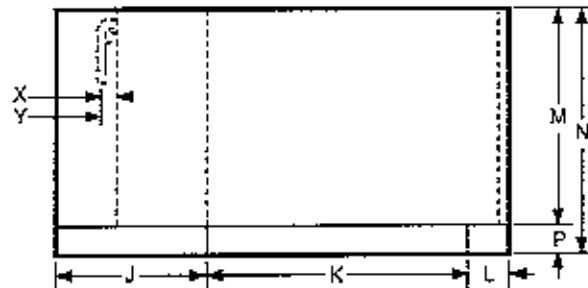
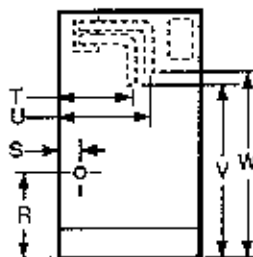
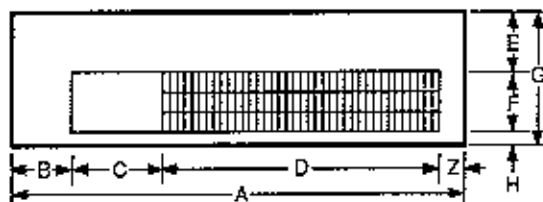
ELECTRICAL DATA		BLOWER		COMPRESSOR		HEATER WATTS	TOTAL FLA	MIN CKT AMPACITY	MAX. FUSE OR HACR SIZE
VOLTAGE	PHASE	FLA	RLA	LEA					
208/230	1/80	0.45	5.70	28.0		1000/1220	6.15	7.58	15
208/230	1/80	0.45	5.70	28.0		1510/1850	8.45	10.50	15
208/230	1/80	0.45	5.70	28.0		2000/2480	11.15	13.80	15
208/230	1/80	0.45	5.70	28.0		2860/3600	16.10	20.00	20
208/230	1/80	0.45	5.70	28.0		3800/4650	20.65	25.80	30
265	1/80	0.45	5.00	27.4		1000	5.45	6.70	15
265	1/80	0.45	5.00	27.4		1500	6.15	7.60	15
265	1/80	0.45	5.00	27.4		2000	6.00	9.90	15
265	1/80	0.45	5.00	27.4		3000	11.75	14.80	15
265	1/80	0.45	5.00	27.4		3700	14.40	17.80	20
200/240	1/50	0.45	5.00	27.4		961/1273	5.75	7.08	15
200/240	1/50	0.45	5.00	27.4		1451/1930	8.49	10.50	15
200/240	1/50	0.45	5.00	27.4		1923/2556	11.10	13.76	15
200/240	1/50	0.45	5.00	27.4		2846/3756	16.10	20.01	25
200/240	1/50	0.45	5.00	27.4		3654/4852	20.67	25.72	30

BLOWER PERFORMANCE		INSTALLED WEIGHT	
EXT. STATIC PRES. I.W.G.		lbs.	
CFM		kg.	

NOTE: "TOTAL FLA" and "MIN. CKT AMPACITY" are calculated at maximum possible condition caused by operation of either the compressor or electrical heater.

**DIMENSIONS**

Item	52" Cabinet	Item	52" Cabinet	Item	52" Cabinet
A	52" (132.1)	J	18 1/4" (46.3)	T	5 3/4" (14.6)
B	7 1/2" (19.1)	K	31" (78.7)	U	7" (17.6)
C	8 1/2" (21.6)	L	4 3/4" (12.1)	V	17" (43.2)
D	31 1/2" (80.3)	M	21" (53.3)	W	18" (45.7)
E	6 3/4" (17.1)	N	24" (61.0)	X	1 1/2" (3.8)
F	5 3/4" (14.6)	P	3" (7.6)	Y	5 1/2" (14.0)
G	13" (33.0)	R	4 7/8" (12.4)	Z	4 1/2" (11.4)
H	1 1/2" (3.8)	S	1 3/4" (4.4)		



FILTER SIZE	10 3/4" x 30 3/4" x 3/8" (27.3 x 78.1 x 1.0)	SHIPPING WGT.	155 lbs. 88 kg.
-------------	---	---------------	--------------------

Continuing engineering research results in steady improvements. Therefore, these ratings and specifications are subject to change without notice. No one is authorized to reproduce or alter this document in any way without the written authorization of an officer of the company.

**801 SERIES  
WATER SOURCE  
HEAT PUMP CONSOLE**  
SIZE: 12 (52") R.H. PIPING

**ClimateMaster**

TAG: \_\_\_\_\_

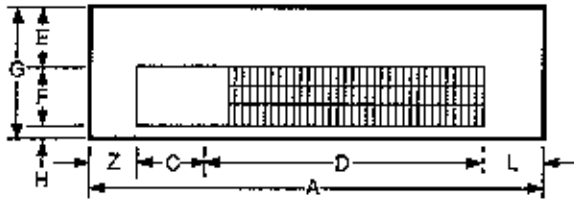
JOB SCHEDULE	TOTAL BTUH	INPUT WATTS	SENSIBLE BTUH	BTUH HEAT OF ABS./REJ.	EER COP	GPM	EWT	LWT	EAT	PRESSURE DROP IN FEET
COOLING										
HEATING										

ELECTRICAL DATA		BLOWER	COMPRESSOR			HEATER WATTS	TOTAL FLA	MIN CKT AMPACITY	MAX. FUSE OR HACR SIZE
VOLTAGE	PHASE	FLA	RLA	LRA					
208/230	1/60	0.45	5.70	28.0		6.15	7.58	15	
208/230	1/60	0.45	5.70	28.0	1000/1220	6.15	7.58	15	
208/230	1/60	0.45	5.70	28.0	1510/1850	8.45	10.50	15	
208/230	1/60	0.45	5.70	28.0	2000/2450	11.15	13.80	15	
208/230	1/60	0.45	5.70	28.0	2960/3600	16.10	20.00	20	
208/230	1/60	0.45	5.70	28.0	3800/4650	20.65	25.80	30	
265	1/60	0.45	5.00	27.4		5.45	6.70	15	
265	1/60	0.45	5.00	27.4	1000	5.45	6.70	15	
265	1/60	0.45	5.00	27.4	1500	6.15	7.60	15	
265	1/60	0.45	5.00	27.4	2000	8.00	9.90	15	
265	1/60	0.45	5.00	27.4	3000	11.75	14.60	15	
265	1/60	0.45	5.00	27.4	3700	14.40	17.90	20	
200/240	1/50	0.45	5.00	27.4		5.45	6.70	15	
200/240	1/50	0.45	5.00	27.4	961/1279	5.75	7.08	15	
200/240	1/50	0.45	5.00	27.4	1451/1930	8.49	10.50	15	
200/240	1/50	0.45	5.00	27.4	1923/2556	11.10	13.76	15	
200/240	1/50	0.45	5.00	27.4	2848/3756	16.10	20.01	25	
200/240	1/50	0.45	5.00	27.4	3654/4852	20.67	25.72	30	

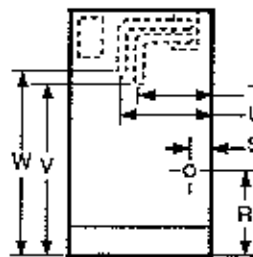
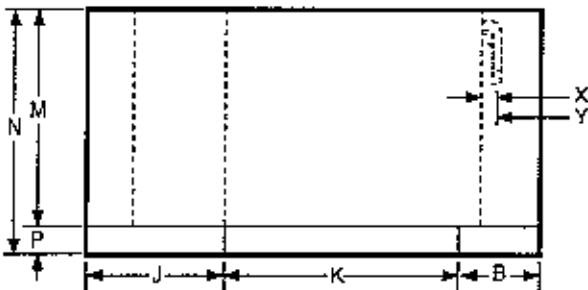
BLOWER PERFORMANCE		INSTALLED WEIGHT	
EXT. STATIC PRES. I.W.G.		lbs.	
CFM		kg.	

NOTE: "TOTAL FLA" and "MIN. CKT AMPACITY" are calculated at maximum possible condition caused by operation of either the compressor or electrical heater.

**DIMENSIONS**



Item	52" Cabinet	Item	52" Cabinet	Item	52" Cabinet
A	52" (132.1)	J	13 1/2" (34.3)	T	5 3/4" (14.6)
B	7 1/2" (19.1)	K	31" (78.7)	U	7" (17.8)
C	6 1/2" (21.6)	L	7 1/2" (19.1)	V	17" (43.2)
D	31 1/2" (80.0)	M	21" (53.3)	W	18" (45.7)
E	6 3/4" (17.1)	N	24" (61.0)	X	1 1/2" (3.8)
F	5 3/4" (14.6)	P	3" (7.6)	Y	5 1/2" (14.0)
G	13" (33.0)	R	4 7/8" (12.4)	Z	4 1/2" (11.4)
H	12" (30.5)	S	1 3/4" (4.4)		



FILTER SIZE	10 3/4" x 30 3/4" x 3/8" (27.3 x 78.1 x 1.0)	SHIPPING WGT.	195 lbs. 88 kg.
-------------	---	---------------	--------------------

Continuing engineering research results in steady improvements. Therefore, these ratings and specifications are subject to change without notice. No one is authorized to reproduce or alter this document in any way without the written authorization of an officer of the company.

**801 SERIES  
WATER SOURCE  
HEAT PUMP CONSOLE**  
SIZE: 08 (48") R.H. PIPING

**ClimateMaster**

TAG: \_\_\_\_\_

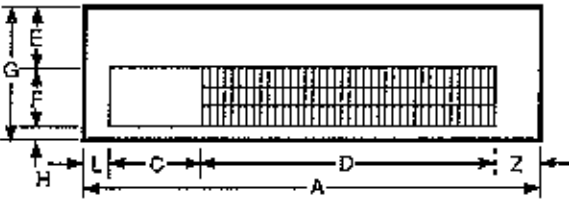
JOB SCHEDULE	TOTAL BTUH	INPUT WATTS	SENSIBLE BTUH	BTUH HEAT OF ABS./REJ.	EER COP	GPM	EWT	LWT	EAT	PRESSURE DROP IN FEET
COOLING										
HEATING										

ELECTRICAL DATA		BLOWER	COMPRESSOR			HEATER WATTS	TOTAL FLA	MIN. CKT AMPACITY	MAX. FUSE OR HACR SIZE
VOLTAGE	PHASE	FLA	RLA	LRA					
208/230	1/60	0.45	3.50	22.4			9.95	4.83	15
208/230	1/60	0.45	3.50	22.4	1000/1220		5.75	7.10	15
208/230	1/60	0.45	3.50	22.4	1510/1850		8.45	10.50	15
208/230	1/60	0.45	3.50	22.4	2000/2450		11.15	13.80	15
208/230	1/60	0.45	3.50	22.4	2960/3600		16.10	20.00	20
208/230	1/60	0.45	3.50	22.4	3800/4650		20.65	25.80	30
265	1/60	0.45	3.00	19.0			3.45	4.20	15
265	1/60	0.45	3.00	19.0	1000		4.25	5.20	15
265	1/60	0.45	3.00	19.0	1500		6.15	7.60	15
265	1/60	0.45	3.00	19.0	2000		8.00	9.90	15
265	1/60	0.45	3.00	19.0	3000		11.75	14.60	15
265	1/60	0.45	3.00	19.0	3700		14.40	17.90	20
200/240	1/50	0.45	3.00	19.0			3.45	4.20	15
200/240	1/50	0.45	3.00	19.0	961/1273		5.75	7.08	15
200/240	1/50	0.45	3.00	19.0	1451/1930		8.49	10.50	15
200/240	1/50	0.45	3.00	19.0	1923/2556		11.10	13.76	15
200/240	1/50	0.45	3.00	19.0	2646/3756		18.10	20.01	20
200/240	1/50	0.45	3.00	19.0	3654/4852		20.67	25.72	30

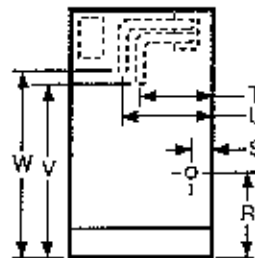
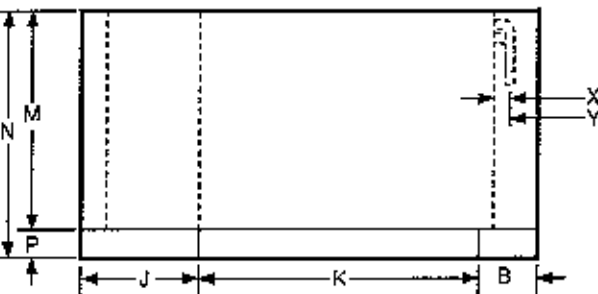
BLOWER PERFORMANCE			INSTALLED WEIGHT		
EXT. STATIC PRES. I.W.G.			lbs.		
CFM			kg.		

NOTE: "TOTAL FLA" and "MIN. CKT AMPACITY" are calculated at maximum possible condition caused by operation of either the compressor or electrical heater.

**DIMENSIONS**



Item	48" Cabinet	Item	48" Cabinet	Item	48" Cabinet
A	48" (122,0)	J	12" (30,5)	T	5 3/4" (14,3)
B	5" (12,7)	K	31" (78,7)	U	7" (17,8)
C	8 1/2" (21,6)	L	2 1/2" (6,4)	V	17" (43,2)
D	31 1/2" (80,0)	M	21" (53,3)	W	18" (45,7)
E	6 3/4" (17,1)	N	24" (61,0)	X	1 1/2" (3,8)
F	5 3/4" (14,6)	P	3" (7,6)	Y	3 1/2" (8,9)
G	13" (33,0)	R	4 1/8" (12,4)	Z	5 1/2" (14,0)
H	1/2" (1,3)	S	1 3/4" (4,4)		



FILTER SIZE	10 3/4" x 30 3/4" x 3/8" (27,3 x 78,1 x 1,0)	SHIPPING WGT.	178 lbs. 80 kg.
-------------	---	---------------	--------------------

Continuing engineering research results in steady improvements. Therefore, these ratings and specifications are subject to change without notice. No one is authorized to reproduce or alter this document in any way without the written authorization of an officer of the company.

**801 SERIES  
WATER SOURCE  
HEAT PUMP CONSOLE  
SIZE: 10 (48") R.H. PIPING**



**TAG:** \_\_\_\_\_

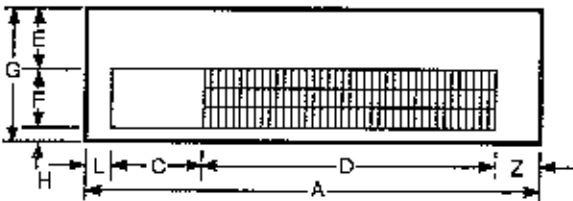
JOB SCHEDULE	TOTAL BTUH	INPUT WATTS	SENSIBLE BTUH	BTUH HEAT OF ABS./REJ.	EER COP	GPM	EWT	LWT	EAT	PRESSURE DROP IN FEET
COOLING										
HEATING										

ELECTRICAL DATA		BLOWER	COMPRESSOR		HEATER WATTS	TOTAL FLA	MIN CKT AMPACITY	MAX. FUSE OR HACR SIZE
VOLTAGE	PHASE	FLA	RLA	LRA				
208/230	1/60	0.45	4.40	21.3	1000/1220	4.65	5.95	15
208/230	1/60	0.45	4.40	21.3	1510/1850	5.75	7.10	15
208/230	1/60	0.45	4.40	21.3	2000/2450	8.45	10.50	15
208/230	1/60	0.45	4.40	21.3	2950/3600	11.15	13.80	15
208/230	1/60	0.45	4.40	21.3	3800/4650	16.10	20.00	20
265	1/60	0.45	3.90	22.3	1000	20.65	25.80	30
265	1/60	0.45	3.90	22.3	1500	4.35	5.40	15
265	1/60	0.45	3.90	22.3	2000	6.15	7.60	15
265	1/60	0.45	3.90	22.3	3000	8.00	9.90	15
265	1/60	0.45	3.90	22.3	3700	11.75	14.60	15
200/240	1/50	0.45	3.90	22.3	1451/1830	14.40	17.90	20
200/240	1/50	0.45	3.90	22.3	961/1273	4.35	5.40	15
200/240	1/50	0.45	3.90	22.3	1451/1830	5.75	7.08	15
200/240	1/50	0.45	3.90	22.3	1923/2556	8.49	10.50	15
200/240	1/50	0.45	3.90	22.3	2846/3756	11.10	13.78	15
200/240	1/50	0.45	3.90	22.3	3654/4852	16.10	20.01	25
200/240	1/50	0.45	3.90	22.3		20.67	25.72	30

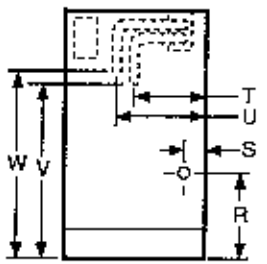
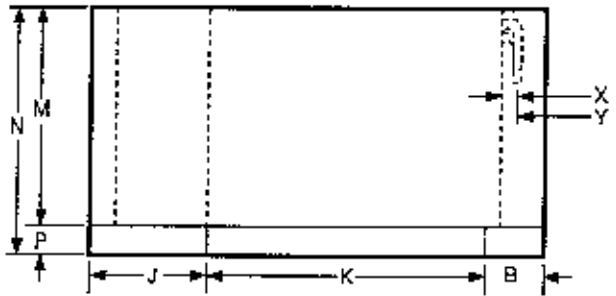
BLOWER PERFORMANCE		INSTALLED WEIGHT	
EXT. STATIC PRES. I.W.G.		lbs.	
CFM		kg.	

NOTE: "TOTAL FLA" and "MIN. CKT AMPACITY" are calculated at maximum possible condition caused by operation of either the compressor or electrical heater.

**DIMENSIONS**



Item	48" Cabinet	Item	48" Cabinet	Item	48" Cabinet
A	48" (122.0)	J	12" (30.5)	T	5 3/4" (14.6)
B	5" (12.7)	K	31" (78.7)	U	7" (17.8)
C	6 1/2" (16.5)	L	2 1/2" (6.4)	V	17" (43.2)
D	31 1/2" (80.0)	H	21" (53.3)	W	13" (45.7)
E	5 3/4" (14.6)	N	2" (5.1)	X	1 1/2" (3.8)
F	4 3/4" (11.9)	P	3" (7.6)	Y	5 1/2" (13.9)
G	13" (33.0)	R	4 7/8" (12.4)	Z	5 1/2" (14.0)
H	12" (30.5)	S	1 3/4" (4.4)		



FILTER SIZE	10 3/4" x 30 3/4" x 3/8" (27.3 x 78.1 x 1.0)	SHIPPING WGT.	180 lbs. 81 kg.
-------------	---	---------------	--------------------

Continuing engineering research results in steady improvements. Therefore, these ratings and specifications are subject to change without notice. No one is authorized to reproduce or alter this document in any way without the written authorization of an officer of the company.



**801 SERIES  
WATER SOURCE  
HEAT PUMP CONSOLE**  
SIZE: 10 (48") L.H. PIPING



TAG: \_\_\_\_\_

JOB SCHEDULE	TOTAL BTUH	INPUT WATTS	SENSIBLE BTUH	BTUH HEAT OF ABS./REJ.	EER COP	GPM	EWT	LWT	EAT	PRESSURE DROP IN FEET
COOLING										
HEATING										

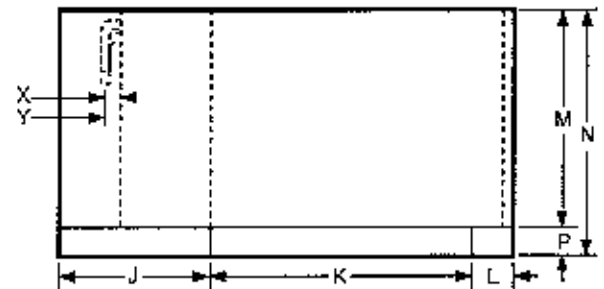
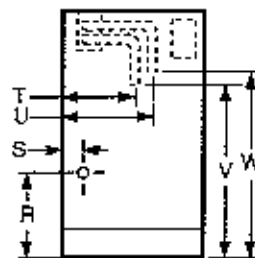
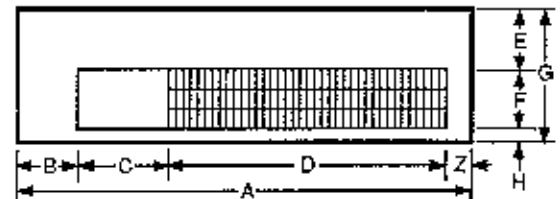
ELECTRICAL DATA		BLOWER	COMPRESSOR		HEATER WATTS	TOTAL FLA	MIN CKT AMPACITY	MAX. FUSE OR HACR SIZE
VOLTAGE	PHASE	FLA	RLA	LRA				
208/230	1/60	0.45	4.40	21.3	1000/1220	4.85	5.95	15
208/230	1/60	0.45	4.40	21.3	1000/1220	5.75	7.10	15
208/230	1/60	0.45	4.40	21.3	1510/1850	8.45	10.50	15
208/230	1/60	0.45	4.40	21.3	2090/2450	11.15	13.80	15
208/230	1/60	0.45	4.40	21.3	2960/3500	16.10	20.00	20
208/230	1/60	0.45	4.40	21.3	3800/4550	20.65	25.80	30
265	1/60	0.45	3.00	22.3	1000	4.35	5.40	15
265	1/60	0.45	3.90	22.3	1000	4.35	5.40	15
265	1/60	0.45	3.90	22.3	1500	6.15	7.60	15
265	1/60	0.45	3.90	22.3	2000	8.00	9.90	15
265	1/60	0.45	3.90	22.3	3000	11.75	14.60	15
265	1/60	0.45	3.90	22.3	3700	14.40	17.90	20
200/240	1/50	0.45	3.90	22.3	960/1273	4.35	5.40	15
200/240	1/50	0.45	3.80	22.3	1451/1900	8.49	10.50	15
200/240	1/50	0.45	3.80	22.3	1823/2556	11.10	13.76	15
200/240	1/50	0.45	3.80	22.3	2846/3756	16.10	20.01	25
200/240	1/50	0.45	3.80	22.3	3654/4852	20.67	25.72	30

BLOWER PERFORMANCE		INSTALLED WEIGHT	
EXT. STATIC PRES. I.W.G.		lbs.	
CFM		kg.	

NOTE: "TOTAL FLA" and "MIN. CKT AMPACITY" are calculated at maximum possible condition caused by operation of either the compressor or electrical heater.

**DIMENSIONS**

Item	48" Cabinet	Item	48" Cabinet	Item	48" Cabinet
A	48" (122.0)	J	14 1/2" (36.2)	I	5 3/4" (14.6)
B	5 1/2" (14.0)	K	31" (76.7)	U	7" (17.8)
C	8 1/2" (21.5)	L	2 3/4" (7.0)	V	17" (43.2)
D	31 1/2" (80.0)	M	21" (53.3)	W	19" (48.7)
E	6 3/4" (17.1)	N	24" (61.0)	X	1 1/2" (3.8)
F	5 9/4" (14.6)	P	3" (7.6)	Y	3 1/2" (8.9)
G	13" (33.0)	R	4 7/8" (12.4)	Z	2 1/2" (6.4)
H	10" (25.3)	S	1 3/4" (4.4)		



FILTER SIZE	10 3/4" x 30 3/4" x 3/8" (27.3 x 78.1 x 1.0)	SHIPPING WGT.	180 lbs. 81 kg.
-------------	---	---------------	--------------------

Continuing engineering research results in steady improvements. Therefore, these ratings and specifications are subject to change without notice. No one is authorized to reproduce or alter this document in any way without the written authorization of an officer of the company.