

# Commercial Rooftop Line

Air Source G/E, AC and HP



Office

School

Restaurant

Health Care

Retail

## COMMERCIAL SERIES

Package Equipment: 3–25 Ton Models



## OUR HISTORY

ClimateMaster's role as a domestic energy and geothermal heating and cooling leader extends back to the late 1950s when the company was first founded in Florida.

ClimateMaster was later relocated to New York where it started manufacturing water loop heat pump systems, and finally moved its headquarters to Oklahoma City where it continues to thrive today.

For more than 50 years, the company has been developing and producing the industry's most innovative and energy efficient heating and cooling systems.

Throughout its history, ClimateMaster has continued to invest in the value of its U.S.-patented technologies, expansion of its American manufacturing facilities, growth of its national network of distributors and training of its domestic employees.

Today, the company remains committed to its Engineered and Assembled in the USA heritage by operating a 510,000 square-foot cutting-edge plant in Oklahoma City, sustaining over 600 American jobs and supporting over 1,200 independent dealers.

## Office / School / Restaurant / Health Care / Retail

In every industry, reliable cost efficient heating and cooling is not an option...it is an absolute necessity. Whether you're looking to keep a workplace cool and productive, students attentive, consumers comfortable or even need to ensure optimal conditions for climate-sensitive materials, Climatemaster Commercial Roof Top Units can get the job done. One of the world's leading manufacturers of central heating and cooling products, Climatemaster distributes a full line of industry standard R-410A commercial products.

### TOTAL COMFORT SOLUTIONS PROVIDER

Choosing ClimateMaster is the best HVAC decision for all of your projects. Why? For over 50 years, we have improved business and home environments around the world. As the world's largest and most innovative manufacturer of water-source and geothermal heat pumps and air-cooled roof top units, we have the best and broadest product offering to help you fit any application. We strive to make your job of specifying and installing our HVAC solutions easier with our cutting-edge tools and first-class support in every market. The quality and durability of our American-made products is shown in that ClimateMaster leads the industry in awards and certifications. Looking ahead, we are constantly looking for better innovations and processes to provide you with the best solutions for your designs and buildings.

### BUSINESS SOLUTIONS

Multi-million dollar testing facilities are used to create the heavy duty business solutions you depend on. Every commercial unit undergoes a complete and unrelenting system of evaluation and testing to ensure its quality and reliability. The ability to withstand rigorous salt spray testing in operating conditions from 0-125°F, proves that Climatemaster Commercial Roof Top Units are the toughest in the industry. Our lean manufacturing focus, including state-of-the-art machinery, provides the flexibility required to integrate new innovative designs quickly, ensuring swift product introduction and availability. Nothing is spared when it comes to advancing the value of Climatemaster Commercial Roof Top Units. Satisfaction guaranteed.



## PACKAGED GAS ELECTRIC



### RGE CZR

- 1 & 3 Phase
- Diagnostics with 7-Segment LED Display
- Nominal Sizes: 3, 4, 5 Ton



### RGE CZT

- 3 Phase Models
- Efficiencies up to 14.6 EER
- 2 Stage Scroll™ Compressor
- Micro Channel Coil
- Nominal Sizes: 6 Ton



### RKQN-A/-C (15 SEER)

- 3 Phase
- -A Electro Mech. Models
- -C 3 Phase DDC Models
- Scroll™ Compressor
- Nominal Sizes: 3, 4, 5 Ton



### RKPN-A/-C (14 SEER)

- 3 Phase
- -A Electro Mech. Models
- -C 3 Phase DDC Models
- Scroll™ Compressor
- Nominal Sizes: 3, 4, 5 Ton



### RGED ZT

- Standard VFD and optional Hot Gas Reheat Technology
- Two-Stage Cooling
- Diagnostics with 7-Segment LED Display
- Nominal Sizes: 7.5, 8.5, 10 & 12.5 Ton



### RGED ZS

- Optional VFD and Hot Gas Reheat Technology
- Two-Stage Cooling
- Diagnostics with 7-Segment LED Display
- Nominal Sizes: 7.5, 8.5, 10 & 12.5 Ton



### RGED ZR

- Single-Stage Cooling
- Diagnostics with 7-Segment LED Display
- Nominal Sizes: 7.5, 8.5, & 10 Ton



15 - 20 Ton

### RKNL-B

- 3 Phase Electro Mech. Models
- Scroll™ Compressor
- Nominal Sizes: 15, 17.5 & 20 Ton



### RKNL-C/-G/-H

- 3 Phase DDC Models with Scroll™ Compressor
- Nominal Sizes:
  - C Models: (15, 17.5 & 20 Ton)
  - G Models: (5, 20 & 25 Ton)
  - H Models: (15, 20 & 25 Ton)
- RKNL-G: Hot Gas Reheat models & features VFD Technology on 7.5 Ton & above
- RKNL-H: Includes VFD Technology



### RKRL-C/-H

- 3 Phase DDC Models
- Scroll™ Compressor
- Nominal Sizes: 15-20 Ton
- RKRL-H: Includes VFD Technology



**PACKAGED AIR CONDITIONERS**



**RACCZR**

- Single-Stage Cooling
- Diagnostics with 7-Segment LED Display
- Scroll™ Compressor
- Nominal Sizes: 3, 4 & 5 Ton



**RACCZT**

- Single-Stage Cooling
- Diagnostics with 7-Segment LED Display
- Scroll™ Compressor
- Nominal Sizes: 6 Ton



**RLPN-A/-C (14 SEER)**

- 1 & 3 Phase
- -A Electro Mech. Models
- -C 3 Phase DDC Models
- Scroll™ Compressor
- Nominal Sizes: 3, 4, 5 Ton
- Hot Gas Reheat option available



**RLQN-A/-C (15 SEER)**

- 1 & 3 Phase
- -A Electro Mech. Models
- -C 3 Phase DDC Models
- Scroll™ Compressor
- Nominal Sizes: 3, 4, 5 Ton



**RLKN-B**

- 3 Phase Electro Mech. Models
- Efficiencies up to 11.2 EER
- Scroll™ Compressor
- Micro Channel Coil
- Nominal Sizes: 6 Ton



**RACDZT**

- Standard VFD and optional Hot Gas Reheat Technology
- Two-Stage Cooling
- Diagnostics with 7-Segment LED Display
- Nominal Sizes: 7.5, 8.5, 10 & 12.5 Ton



**RACDZS**

- Optional VFD and Hot Gas Reheat Technology
- Two-Stage Cooling
- Diagnostics with 7-Segment LED Display
- Nominal Sizes: 7.5, 8.5, 10 & 12.5 Ton



**RACDZR**

- Single-Stage Cooling
- Diagnostics with 7-Segment LED Display
- Nominal Sizes: 7.5, 8.5, & 10 Ton



**RLNL-B**

- 3 Phase Electro Mech. Models
- Scroll™ Compressor
- Nominal Sizes: 15, 17.5, 20 & 25 Ton



**RLNL-C/-G/-H**

- 3 Phase DDC Models with Scroll™ Compressor
- Nominal Sizes:
  - C Models: (20 Ton)
  - G Models: (15, 20 & 25 Ton)
  - H Models: (15, 20 & 25 Ton)
- RLNL-G: Hot Gas Reheat models & features VFD Technology on 7.5 Ton & above
- RLNL-H: Includes VFD Technology



**RLRL-C/-H**

- 3 Phase DDC Models
- Scroll™ Compressor
- Nominal Sizes: 15 & 20 Ton
- RLRL-H: Includes VFD Technology

**Commercial Rooftop Series**

*Limited Warranty\* Information:*

- Refer to applicable manufacturer product warranty card for specific details
- Compressor – 5 Years (Commercial Applications)
- Parts – 1 Year (Commercial Applications)
- Stainless Steel Heat Exchanger – 20 Years (Commercial Applications)
- Standard Heat Exchanger – 10 Years (Commercial Applications)



# FAMILY OF PRODUCTS

## PACKAGED HEAT PUMPS



### RJPL-C (14 SEER)

- 3 Phase DDC Models
- Scroll™ Compressor
- Nominal Sizes: 3–5 Ton



### RJPL-A (14 SEER)

- 1 & 3 Phase Electro Mech. Models
- Scroll™ Compressor
- Nominal Sizes: 3–5 Ton



### RHPDZT

- Standard VFD Technology
- Two-Stage Cooling
- Diagnostics with 7-Segment LED Display
- Nominal Sizes: 7.5, 8.5 & 10 Ton



### RHPDZS

- Optional VFD Technology
- Two-Stage Cooling
- Diagnostics with 7-Segment LED Display
- Nominal Sizes: 7.5, 8.5 & 10 Ton



### RHPCZR

- 1 & 3 Phase Models
- Scroll™ Compressor
- Diagnostics with 7-Segment LED Display
- Nominal Sizes: 3, 4 & 5 Ton



### RHPCZT

- Scroll™ Compressor
- Diagnostics with 7-Segment LED Display
- Nominal Sizes: 6 Ton



## STANDARD FEATURES

- R-410A Refrigerant
- TXV refrigerant control<sup>1</sup>
- Enhanced access with 1/4 turn fasteners and hinges<sup>1</sup>
- Removable drain pan<sup>1</sup>
- High and low pressure control
- Filter driers
- Easy low voltage connection
- Molded compressor plug
- Enhanced wiring harnesses
- Slide-out indoor fan assembly<sup>1</sup>
- Cooling operation to 125°F
- Smoke detector wiring<sup>1</sup>
- Improved IFC (Integrated Furnace Control)
- Thru-the-curb gas piping<sup>1</sup>
- Dependable outdoor fan shaft down design
- Evaporator is intertwined face split
- Sturdy cabinet
- Scroll™ compressor technology in all models
- Powder coat paint finish
- Convertible airflow
- External gauge ports
- Optional louvered hail guards
- Factory charged, wired and run-tested
- Drawn base pan
- Commercial grade base rails

<sup>1</sup>Not standard on all models. See model specifications sheet for details.

## COMMERCIAL ROOFTOP FEATURES & OPTIONS



### HAIL GUARD

- Provides coil protection from hail or vandalism



### ECONOMIZER

- Single enthalpy (outdoor)
- Optional field-installed power exhaust
- Optional field-installed carbon dioxide detector
- Optional field-installed dual enthalpy
- California energy code 24 compliant



### STAINLESS STEEL HEAT EXCHANGER

- 20-Year warranty in commercial applications



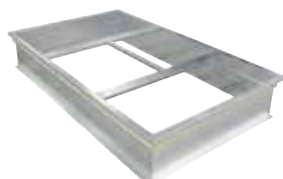
### UNWIRED CONVENIENCE OUTLET

- 120 VAC
- 15 amp GFCI



### UNFUSED SERVICE DISCONNECT

- Provides convenient disconnect access



### ROOF CURB

#### RXSG

- 2–5 ton

#### RXKG

- 3–25 ton

#### ROOF CURB ADAPTERS

#### RXXR



### COMMERCIAL COILS

#### RCCL

- Dual furnace coils
- Nominal Sizes: 6.5, 7.5 & 10 ton

### ADDITIONAL OPTIONS

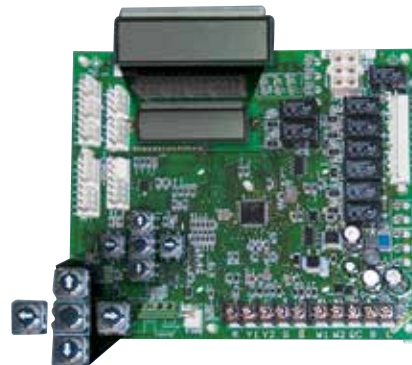
- Low ambient control kit
- Freeze-stat kit



## Direct Digital Control

Direct Digital Control (DDC) constantly monitors multiple parameters, providing industry leading diagnostics and communication.

- Two line, 16 character LCD
- Keypad driven menu
- Compatible with most 24 volt thermostats
- BAS compatible (Modbus, BACnet or LonWorks)
- Unmatched factory sensors, unprecedented diagnostics

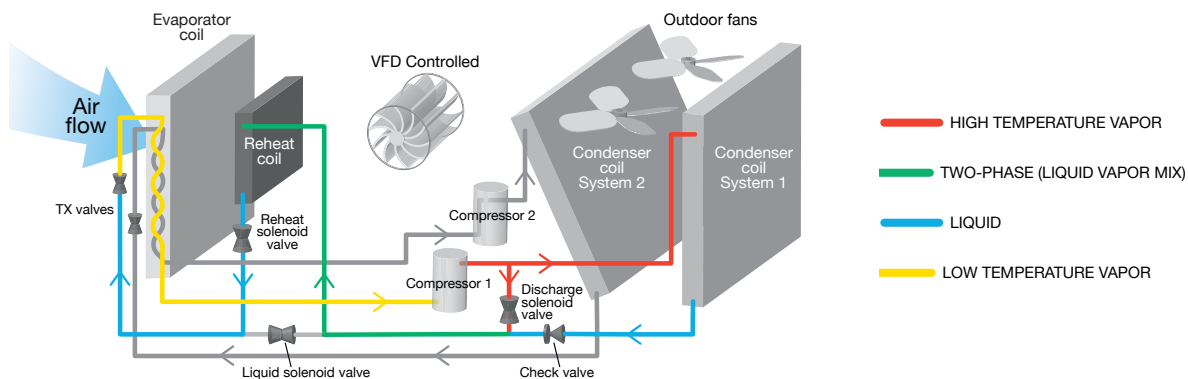


## Hot Gas Reheat

The Commercial Rooftop Unit with Hot Gas Reheat keeps humidity levels constant, even when there's little or no demand for air conditioning, giving business owners independent control of temperature and humidity.

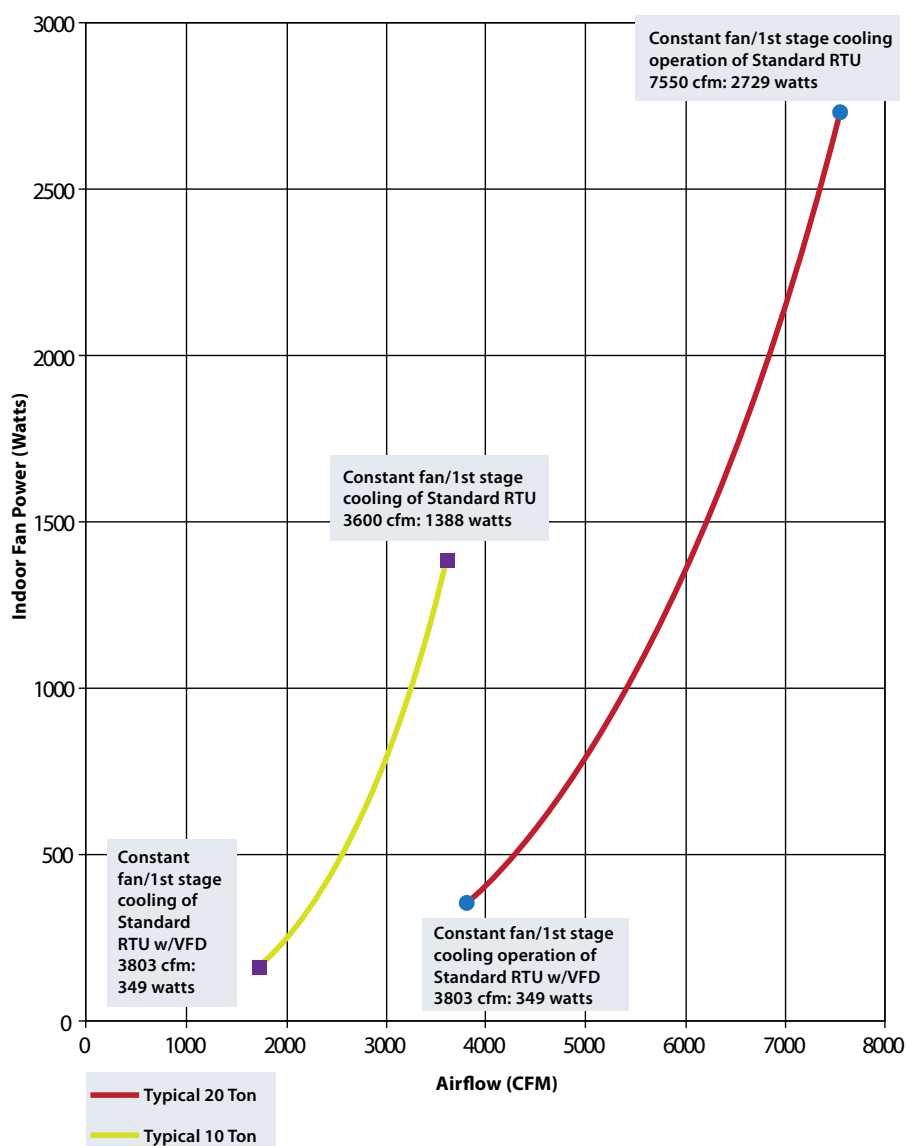
- Delivers dry, neutral air in reheat mode
- Available on package gas electric units and package air conditioners in 3–25 ton models
- Variable Frequency Drive (VFD) Technology standard on 7.5 ton and above models
- Easy installation and service with ClearControl

### DEHUMIDIFICATION MODE





## INDOOR FAN AIRFLOW VS. POWER



### VFD TECHNOLOGY



### VFD TECHNOLOGY

Climatemaster Commercial Package Units, featuring VFD Technology integrate variable frequency drive operation for substantial energy savings and improved comfort.

- 85% reduction of indoor fan power during first stage cooling
- Improves part load efficiency (IEER) 15% to 30%
- Removes twice as much moisture than standard package units for lower relative humidity and increased comfort
- Meets ASHRAE 90.1-2010 and California Title 24 requirements
- Available on 7.5–25 ton package gas electric units and package air conditioners



## PACKAGE GAS ELECTRIC

COOLING DATA							HEAT INPUT		PHYSICAL DATA	
MODEL	NOMINAL TONNAGE	GROSS CAPACITY (BTUH)	AHRI RATED NET CAPACITY (BTUH)	NOMINAL CFM/AHRI (CFM)	EER	SEER/IEER	STANDARD: (BTUH)	HIGH: (BTUH)	DIMENSIONS H X W X L (INCHES)	SHIPPING WEIGHT (LBS)
RGECZT072	6.0	70,000	68,000	2,400	11	NA/14.6	75,000/52,500 <sup>1</sup>	120,000/84,000 <sup>1</sup>	41 x 44 x 78	620
RGECZR036	3.0	36,000	35,400	1,200/1,300	11.2	NA	75,000/52,500 <sup>1</sup>	100,000/70,000 <sup>1</sup>	41 x 45 x 78	645
RGECZR048	4.0	48,000	47,500	1,600/1,730	11.2	NA	75,000/52,500 <sup>1</sup>	100,000/70,000 <sup>1</sup>	41 x 45 x 78	668
RGECZR060	5.0	60,000	57,500	2,000/1,950	11.2	NA	75,000/52,500 <sup>1</sup>	100,000/70,000 <sup>1</sup>	41 x 45 x 78	671
RKPN-(A,C)036	3.0	36,200	34,600	1,200/1,250	11.6	14.0/NA	80,000	120,000	35 x 46.5 x 76	527
RKPN-(A,C)048	4.0	48,000	46,000	1,600/1,500	11.5	14.0/NA	80,000	135,000	35 x 46.5 x 76	567
RKPN-(A,C)060	5.0	60,000	58,500	2,000/1,800	11.5	14.0/NA	100,000	135,000	35 x 46.5 x 76	579
RKQN-(A,C)036	3.0	36,200	35,400	1,200/1,250	12.5	15.0/NA	80,000	120,000	35 x 46.5 x 76	532
RKQN-(A,C)048	4.0	48,000	46,500	1,600/1,600	12.5	15.0/NA	80,000	135,000	35 x 46.5 x 76	567
RKQN-(A,C)060	5.0	59,000	49,000/57,000 <sup>1</sup>	1,375/1,800	19.9/11.5 <sup>1</sup>	15.0/NA	100,000	135,000	35 x 46.5 x 76	579
RGEDZR090	7.5	88,000	85,000	3,000/3,175	11.0	NA/12.7	105,000/150,000 <sup>1</sup>	143,000/205,000	50 x 58 x 89	878
RGEDZR102	8.5	99,000	96,000	3,400/3,200	11.0	NA/12.7	105,000/150,000 <sup>1</sup>	157,500/225,000 <sup>1</sup>	50 x 58 x 89	907
RGEDZR120	10.0	118,000	114,000	4,000/3,480	11.0	NA/12.7	105,000/150,000 <sup>1</sup>	157,500/225,000 <sup>1</sup>	50 x 58 x 89	935
RGEDZS090	7.5	88,000	85,000	3,000/3,175	11.0	NA/12.7	105,000/150,000 <sup>1</sup>	143,000/205,000 <sup>1</sup>	50 x 58 x 89	878
RGEDZS102	8.5	99,000	96,000	3,400/3,225	11.0	NA/12.7	105,000/150,000 <sup>1</sup>	157,500/225,000 <sup>1</sup>	50 x 58 x 89	907
RGEDZS120	10.0	118,000	114,000	4,000/3,480	11.0	NA/12.7	105,000/150,000 <sup>1</sup>	157,500/225,000 <sup>1</sup>	50 x 58 x 89	935
RGEDZS150	12.5	148,000	142,000	5,000/3,750	11.0	NA/12.7	105,000/150,000 <sup>1</sup>	157,500/225,000 <sup>1</sup>	60 x 58 x 89	1,133
RGEDZT090	7.5	88,000	85,000	3,000/3,175	11.0	NA/14.6	105,000/150,000 <sup>1</sup>	143,000/205,000 <sup>1</sup>	50 x 58 x 89	878
RGEDZT102	8.5	99,000	96,000	3,400/3,225	11.0	NA/14.6	105,000/150,000 <sup>1</sup>	157,500/225,000 <sup>1</sup>	50 x 58 x 89	907
RGEDZT120	10.0	118,000	79,600	4,000/3,480	11.0	NA/14.6	105,000/150,000 <sup>1</sup>	157,500/225,000 <sup>1</sup>	50 x 58 x 89	935
RGEDZT150	12.5	148,000	142,000	5,000/3,750	10.8	NA/14.0	105,000/150,000 <sup>1</sup>	157,500/225,000 <sup>1</sup>	60 x 58 x 89	1,133
RKNL-(B,C)180	15.0	188,000	172,000	6,000/5,900	10.8	NA/12.2	125,000/250,000 <sup>1</sup>	175,000/350,000 <sup>1</sup>	57 x 86 x 152	2,115
RKNL-(B,C)210	17.5	212,000	200,000	7,000/7,025	10.8	NA/12.2	125,000/250,000 <sup>1</sup>	175,000/350,000 <sup>1</sup>	57 x 86 x 152	2,329
RKNL-(B,C)240	20.0	244,000	228,000	8000/7,725	10.8	NA/12.2	150,000/300,000 <sup>1</sup>	200,000/400,000 <sup>1</sup>	57 x 86 x 152	2,461
RKNL-(H,G)180 <sup>2</sup>	15.0	188,000	172,000	6,000/5,900	10.8	NA/14.0	125,000/250,000 <sup>1</sup>	175,000/350,000 <sup>1</sup>	57 x 86 x 152	2,206
RKNL-(H,G)240 <sup>2</sup>	20.0	244,000	228,000	8,000/7,725	10.8	NA/14.0	150,000/300,000 <sup>1</sup>	200,000/400,000 <sup>1</sup>	57 x 86 x 152	2,547
RKNL-(H,G)300 <sup>2</sup>	25.0	312,000	286,000	10,000/9,475	9.8	NA/13.0	150,000/300,000 <sup>1</sup>	200,000/400,000 <sup>1</sup>	57 x 86 x 152	2,619
RKRL-(C,H)180 <sup>2</sup>	15.0	178,000	174,000	6,000/5,500	12.2	NA/13.2/15	125,000/250,000 <sup>1</sup>	175,000/350,000 <sup>1</sup>	57 x 86 x 152	2,147
RKRL-(C,H) 240 <sup>2</sup>	20.0	240,000	232,000	8,000/7,375	12.0	NA/12.8/14.6	150,000/300,000 <sup>1</sup>	200,000/400,000 <sup>1</sup>	57 x 86 x 152	2,389

<sup>1</sup>1st stage/2nd stage <sup>2</sup>H-VFD

# COMMERCIAL ROOFTOP PRODUCT SPECIFICATIONS

## PACKAGE AIR CONDITIONERS

COOLING DATA							HEAT INPUT		PHYSICAL DATA	
MODEL	NOMINAL TONNAGE	GROSS CAPACITY (BTUH)	AHRI RATED NET CAPACITY (BTUH)	NOMINAL CFM/ AHRI (CFM)	EER	SEER/IEER	LOW	HIGH	DIMENSIONS H X W X L (INCHES)	SHIPPING WEIGHT (LBS)
RACCZR036	3.0	36,000	35,400	1,200/1,300	11.2	14.0/NA	10	24	41 x 45 x 78	595
RACCZR048	4.0	49,000	47,500	1,600/1,730	11.2	14.0/NA	10	24	41 x 45 x 78	618
RACCZR060	5.0	59,500	57,500	2,000/1,950	11.2	14.0/NA	10	24	41 x 45 x 78	595
RACCZT072	6.0	70,000	68,000	2,400/2,400	11.2	NA/14.8	10	24	41 x 45 x 78	621
RLPN-(A,C)036	3.0	36,200	34,600	1,200/1,250	11.6	14.0/NA	10	20	35 x 46.5 x 76	478
RLPN-(A,C)048	4.0	48,000	46,000	1,600/1,500	11.6	14.0/NA	10	20	35 x 46.5 x 76	503
RLPN-(A,C)060	5.0	60,000	58,500	2,000/1,800	11.6	14.0/NA	10	20	35 x 46.5 x 76	529
RLQN-(A,C)036	3.0	36,200	35,400	1,200/1,250	12.5	15.0/NA	6	20	35 x 46.5 x 76	492
RLQN-(A,C)048	4.0	48,000	46,500	1,600/1,600	12.5	15.0/NA	6	20	35 x 46.5 x 76	517
RLQN-(A,C)060	5.0	59,000	49,000/57,000 <sup>1</sup>	1,375/1,800	19.9/11.6 <sup>1</sup>	15.0/NA	6	20	35 x 46.5 x 76	5,763
RACDZR090	7.5	88,000	85,000	3,000/3,175	11.2	NA/12.9	10	40	50 x 56 x 89	775
RACDZR102	8.5	99,000	96,000	3,400/3,200	11.2	NA/12.9	10	40	50 x 56 x 89	801
RACDZR120	10.0	118,000	114,000	4,000/3,480	11.2	NA/12.9	10	40	50 x 56 x 89	830
RACDZS090	7.5	88,000	85,000	3,000/3,200	11.2	NA/12.9	10	40	50 x 56 x 89	775
RACDZS102	8.5	99,000	96,000	3,400/3,225	11.2	NA/12.9	10	40	50 x 56 x 89	801
RACDZS120	10.0	118,000	114,000	4,000/3,480	11.2	NA/12.9	10	40	50 x 56 x 89	830
RACDZS150	12.5	148,000	142,000	5,000/4,150	11.0	NA/12.4	10	40	60 x 56 x 89	1,032
RACDZT090	7.5	88,000	85,000	3,000/3,200	11.2	NA/14.8	10	40	50 x 56 x 89	775
RACDZT102	8.5	99,000	96,000	3,400/3,225	11.2	NA/14.8	10	40	50 x 56 x 89	801
RACDZT120	10.0	118,000	114,000	4,000/3,480	11.2	NA/14.8	10	40	50 x 56 x 89	830
RACDZT150	13.0	148,000	142,000	5,000/4,150	11.0	NA/14.2	10	40	60 x 56 x 89	1,032
RLNL-(B,C)180 <sup>2</sup>	15.0	188,000	172,000	6,000/5,900	11.0	NA/12.4	20	75	57 x 86 x 152	2,087
RLNL-(B,C)210 <sup>2</sup>	17.5	212,000	200,000	7,000/7,025	11.0	NA/12.4	20	75	57 x 86 x 152	2,169
RLNL-(B,C)240 <sup>2</sup>	20.0	244,000	228,000	8,000/7,725	11.0	NA/12.4 <sup>2</sup>	20	75	57 x 86 x 152	2,427
RLNL-H300 <sup>2</sup>	25.0	312,000	286,000	10,000/9,475	11.0	NA/13.2	20	75	57 x 86 x 152	2,387
RLNL-(H,G)180	15.0	188,000	172,000	6,000/5,900	11.0	NA/14.2	20	75	57 x 86 x 152	2,061
RLNL-(H,G)240	20.0	244,000	228,000	8,000/7,725	11.0	NA/14.2	20	75	57 x 86 x 152	2,395
RLNL-(H,G)300	25.0	286,000	288,000	10,000/9,475	10.0	NA/13.2	20	75	57 x 86 x 152	2,467
RLRL-(C,H)180 <sup>2</sup>	15.0	178,000	172,000	6,000/5,500	11.6	NA/12.4	20	75	57 x 86 x 152	2,047
RLRL-(C,H)240 <sup>2</sup>	20.0	240,000	228,000	8,000/7,375	11.6	12.4	20	75	57 x 86 x 152	2,427

PACKAGE HEAT PUMPS

COOLING DATA							HEAT INPUT				PHYSICAL DATA	
MODEL	NOMINAL TONNAGE	GROSS CAPACITY (BTUH)	AHRI RATED NET CAPACITY (BTUH)	NOMINAL CFM/ AHRI (CFM)	EER	SEER/ IEER	47 Capacity	COP 47 Efficiency	17 Capacity	COP 17 Efficiency	DIMENSIONS H X W X L (INCHES)	SHIPPING WEIGHT (LBS)
RJPL-(A,C)036	3.0	37,800	36,800	1,200/1,200	12.0	14.0	33,600	3.5	19,400	2.2	35 x 48 x 76	532
RJPL-(A,C)042	3.5	44,000	42,000	1,400/1,400	11.6	14.0	40,000	3.6	24,200	2.4	35 x 48 x 76	536
RJPL-(A,C)048	4.0	50,000	47,500	1,600/1,600	11.6	14.0	49,000	3.8	29,800	2.4	35 x 48 x 76	550
RJPL-(A,C)060	5.0	61,000	59,500	2,000/1,850	11.7	14.0	59,500	3.6	36,400	2.2	35 x 48 x 76	580
RHPCZR036	3.0	36,000	35,400	1,200/1,280	11	14/NA	34,400	3.7	20,000	2.2	41 x 45 x 78	595
RHPCZR048	4.0	47,000	46,000	1,600/1,685	11	14/NA	46,000	3.5	20,000	2	41 x 45 x 78	618
RHPCZR060	5.0	59,500	57,500	2,000/2,050	11	14/NA	57,500	3.5	35,000	2	41 x 45 x 78	621
RHPCZT072	6.0	70,000	68,000	2,400/2,400	11	NA/14.1	68,000	3.4	41,000	2.2	41 x 45 x 78	621
RHPDZS090	7.5	89,000	86,000	3,000/3,030	11.0	NA	86,000	3.3	48,000	2.3	50 x 58 x 89	786
RHPDZS102	8.5	101,000	98,000	3,400/3,345	11.0	NA	98,000	3.3	60,000	2.3	50 x 58 x 89	861
RHPDZS120	10.0	119,000	114,000	4,000/4,060	11.0	NA	114,000	3.3	72,000	2.3	50 x 58 x 89	874
RHPDZT090	7.5	89,000	86,000	3,000/3,030	11.0	NA	86,000	3.4	48,000	2.3	50 x 58 x 89	825
RHPDZT102	8.5	101,000	98,000	3,400/3,345	11.0	NA	98,000	3.4	60,000	2.3	50 x 58 x 89	861
RHPDZT120	10.0	119,000	119,000	4,000/4,060	11.0	NA	114,000	2.4	72,000	2.3	50 x 58 x 89	913



RapidSpec™ is a web-based specification and selection software tool. It was designed to quickly aid HVAC professionals in properly selecting ClimateMaster equipment for any commercial air cooled rooftop project. This tool can take less than five minutes to get submittal packages customized for each job or application—you won't believe the speed!

#### Key Benefits:

- Simple and easy to configure a model and select product
- Generate performance data for custom conditions
- Offers model and accessory drawings
- Quickly specify commercial jobs by creating full submittal package



#### INTERNATIONAL STANDARDS ORGANIZATION (ISO) CERTIFICATION

Certification means that our manufacturing facility has passed a series of independent audits proving it maintains a modern quality control system to consistently provide quality products. These audits assess all of a company's systems that affect quality. Our manufacturing facilities have achieved the prestigious ISO 9001:2015 Certification.



7300 S.W. 44th Street  
Oklahoma City, OK 73179  
Phone: 405-745-6000  
Fax: 405-745-6058  
climatemaster.com

ClimateMaster works continually to improve its products. As a result, the design and specifications of each product at the time for order may be changed without notice and may not be as described herein. Please contact ClimateMaster's Customer Service Department at 1-405-745-6000 for specific information on the current design and specifications. Statements and other information contained herein are not express warranties and do not form the basis of any bargain between the parties, but are merely ClimateMaster's opinion or commendation of its products.