



**Climate
Master**

decentralized
air conditioning systems

**Installation
instructions for
control modules**

INSTALLATION AND OPERATING INSTRUCTION FOR CONTROL MODULES



Climate Master Division
International Heating
and Air Conditioning Corp.
2007 Beesongrove Place,
Utica, New York 13501



**Climate
Master**

decentralized
air conditioning systems

**Installation
instructions for
control modules**

INSTALLATION AND OPERATING INSTRUCTION FOR CONTROL MODULES



Climate Master Division
International Heating
and Air Conditioning Corp.
2007 Beechgrove Place,
Utica, New York 13501

INSTALLATION AND OPERATING INSTRUCTIONS FOR MASTER-SLAVE CONTROL

CONTROL INSTALLATION

- Step 1. Remove and save two (2) mounting screws from top front of control module.
- Step 2. Complete 24v wiring at terminal boards located on the back of the control module. MASTER-SLAVE control is activated by a 24v signal controlled by a wall thermostat or a SELF CONTAINED MASTER control. Wall thermostats are available for manual or automatic changeover. See Sheet 5, 6 and 7 for wall thermostat wiring instructions. See Sheet 4 for wiring instructions when SELF CONTAINED MASTER control is used.
- Step 3. Hook slot at the top rear of control module over the support angle in the room cabinet. Swing module upward and forward until mounting holes in module align with mounting slots in the front flange of room cabinet. (See Fig. I).
- Step 4. Re-install two (2) mounting screws and tighten securely.
(See Fig. I).
- Step 5. Plug heat section cord and cool chassis cord into the control. The heat section cord and cool chassis cord are labeled to match their receptacles at the control.

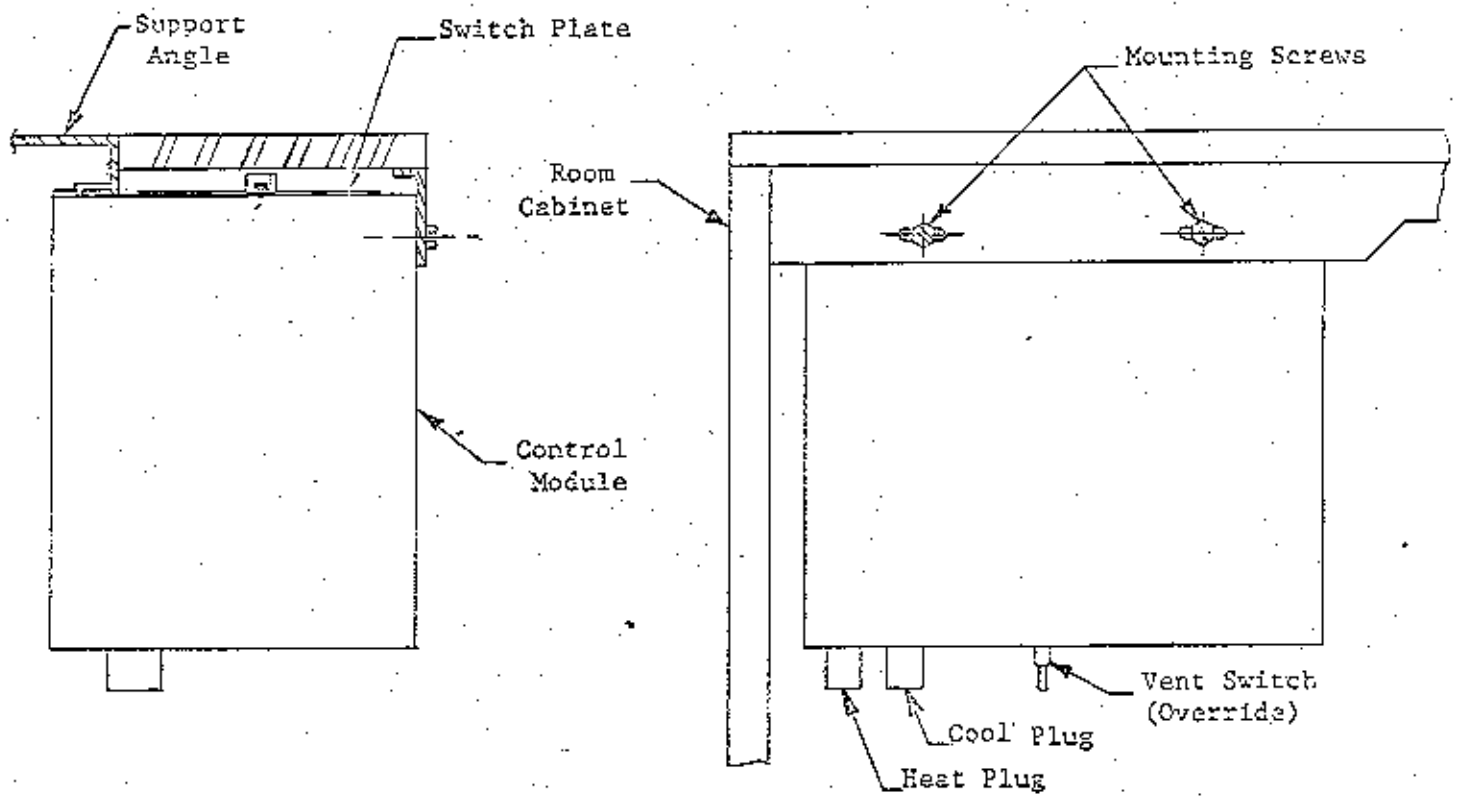


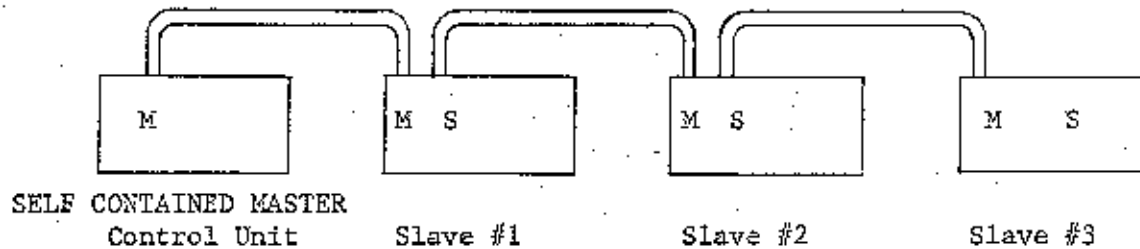
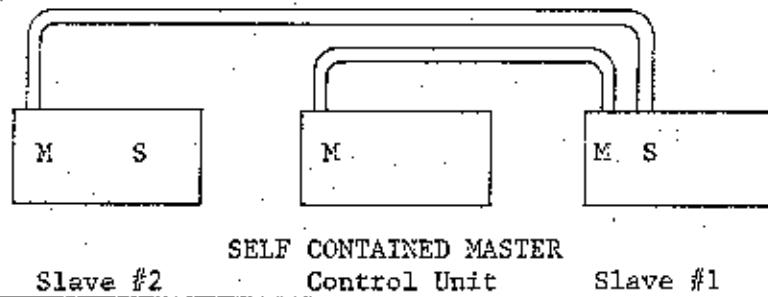
Fig. I

CONTROL OPERATION

Correct voltage and current must be supplied to each unit in accordance with the nameplate ratings. All electrical leads must be connected to the control module in the correct manner and the disconnect switch must be closed. CAUTION: Before turning on main power, make certain that OFF button of SELF CONTAINED MASTER is down or WALL THERMOSTAT is in OFF position. Control functions as follows:

- A. SELF CONTAINED MASTER or WALL THERMOSTAT in OFF position,
MASTER-SLAVE will be OFF.
- B. SELF CONTAINED MASTER or WALL THERMOSTAT in HEAT DEMAND.
MASTER-SLAVE unit roomside blower will run at Lo Speed,
fresh air damper will be open and heater will be on.
- C. SELF CONTAINED MASTER or WALL THERMOSTAT in HEAT NEUTRAL.
MASTER-SLAVE unit roomside blower will run at Lo Speed,
fresh air damper will be open and heater will be off.
- D. SELF CONTAINED MASTER or WALL THERMOSTAT in COOL DEMAND.
MASTER-SLAVE unit roomside blower will run at Hi Speed,
fresh air damper will be closed, compressor and condenser
blower will be on.
- E. SELF CONTAINED MASTER or WALL THERMOSTAT in COOL NEUTRAL.
MASTER-SLAVE unit roomside blower will run at Lo Speed,
fresh air damper will be open and compressor and condenser
blower will be off.

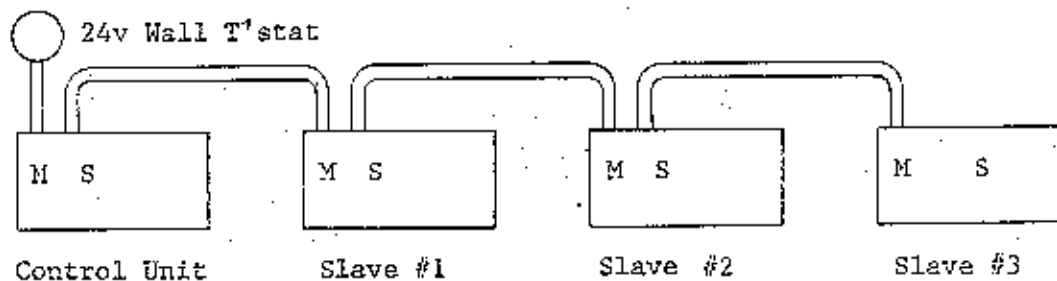
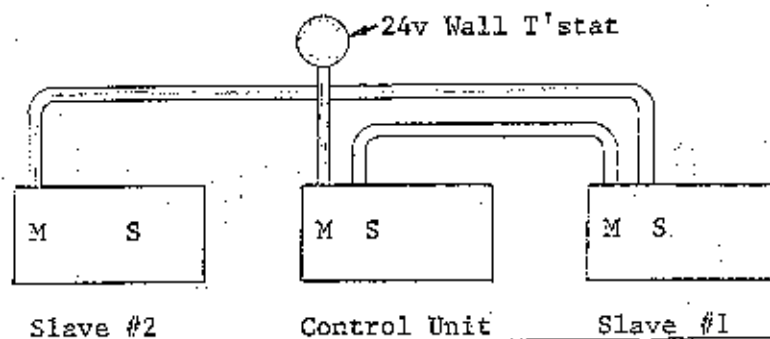
NOTE: Fresh air damper will be closed during all cycles
unless damper override switch is set to open position.



M = 24v "Master" Term. Board
S = 24v "Slave" Term. Board

Only 24v wiring is shown above.
Each unit to have its own "Line
Voltage" Power Supply

1. All units except SELF CONTAINED MASTER will have the same controls and "Master-Slave" terminal boards.
2. Number of slaves attached to control unit is limited only in that location of units must be properly placed to obtain uniform room temperature.
3. 18 Ga. -4 wire-color coded "Class 2" Signal wiring from control unit "Master" and from "Master" to "Slave" (to be supplied and installed by contractor).



M = 24v "Master" Term. Board
S = 24v "Slave" Term. Board

Only 24v wiring is shown above
Each unit to have its own "Line
Voltage" Power Supply

1. All units will have the same controls and "Master-Slave" terminal boards.
2. Placement of wall t'stat will determine "Control" unit.
3. Number of slaves attached to control unit is limited only in that location of units and wall t'stat must be properly placed to obtain uniform room temperature.
4. Wires from 24v wall t'stat will be connected to "Master" terminal board of control unit only!!
5. 18 Ga.-4 wire-color coded "Class 2" Signal wiring from t'stat to "Master" and from "Master" to "Slave" (to be supplied and installed by contractor).