



# TRANQUILITY® (SWT) LARGE WATER-TO-WATER SERIES

COMMERCIAL | Sizes: 020-80 | 60 Hz – R-454B



The Tranquility® (SWT) Large Water-to-Water Series offers high efficiency, high capacity, advanced features, quiet operation, and application flexibility. ClimateMaster's Tranquility Large Water-to-Water Series can be used for radiant floor heating, snow/ice melt, chilled water for fan coils, industrial process control, potable hot water generation, hot/chilled water for make-up air, and many other types of HVAC and industrial applications that require cost effective heated or chilled water.

## The SWT Series Advantage

### STANDARD FEATURES

- High efficiencies in both heating and cooling
- Scroll compressors
- Dual independent refrigeration circuits
- Expansive service access through the front of the unit allows multiple units to be installed side-by-side for large capacity installations
- Rear, flanged water connections allow for easy connection and integration into the building water loop
- Heavy gauge galvanized steel construction with polyester powder coat paint
- Small footprint for getting through doorways or into freight elevators
- Enhanced microprocessor controls with DDC integration, and included touch-screen interface in the front panel

### CONFIGURABLE OPTIONS

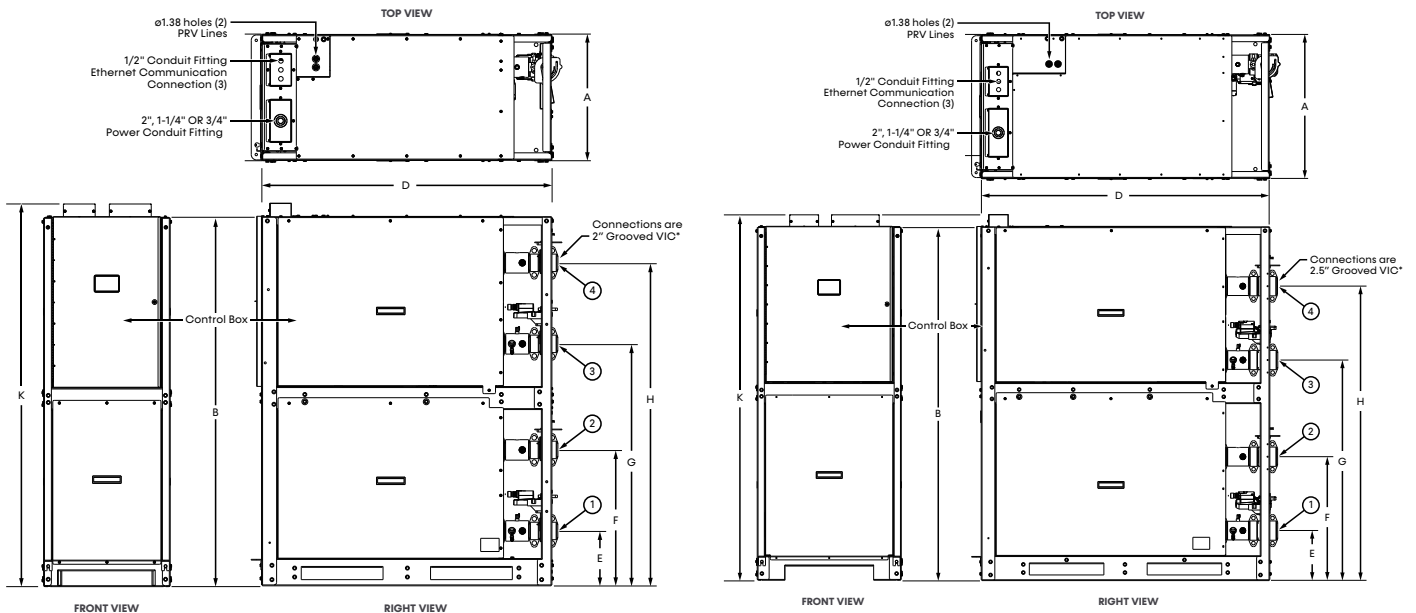
- 65 kA SCCR Rating
- Compressor blankets for additional sound control
- Pressure Release Valves

# TRANQUILITY (SWT) WATER-TO-WATER SERIES

Rated in Accordance with ASHRAE/AHRI/ISO 13256-2 English (I-P) Units

Model	Water Loop Heat Pump				Ground Water Heat Pump				Ground Loop Heat Pump			
	Cooling		Heating		Cooling		Heating		Cooling		Heating	
	Indoor 53.6°F Outdoor 86°F	EER	Indoor 104°F Outdoor 68°F	COP	Indoor 53.6°F Outdoor 59°F	EER	Indoor 104°F Outdoor 50°F	COP	Indoor 53.6°F Outdoor 77°F	EER	Indoor 104°F Outdoor 32°F	COP
	Capacity btu/h	btu/h/W	Capacity btu/h		Capacity btu/h	btu/h/W	Capacity btu/h		Capacity btu/h	btu/h/W	Capacity btu/h	
SWT20	247,000	14.5	346,000	4.8	279,000	22.9	274,000	3.9	259,000	16.9	212,000	3.1
SWT30	371,000	14.7	518,000	4.8	415,000	22.5	411,000	3.9	388,000	17.0	310,000	3.0
SWT50	563,000	14.8	789,000	4.9	624,000	21.9	626,000	4.1	584,000	16.9	478,000	3.2
SWT65	731,000	14.8	1,033,000	5.0	820,000	22.5	806,000	4.1	763,000	17.0	630,000	3.3
SWT80	917,000	14.6	1,303,000	4.9	1,028,000	21.9	1,018,000	4.0	958,000	16.8	797,000	3.3

## Dimensional Data



### NOTES



\* Optional grooved-to-MPT adapter available for transitioning to a hose kit or other piping arrangements.

Model Size	A Chassis Width	B Chassis Height	D Chassis Depth	E Header Location	F Header Location	G Header Location	H Header Location	K Height with Electrical Connections	Connection Size (Grooved VIC)
020 030	24.00 (60.96)	70.00 (177.8)	55.00 (139.7)	10.35 (26.29)	25.71 (65.30)	45.80 (116.33)	61.16 (155.35)	72.51 (184.18)	2 in.

- NOTES:  
 1. Dimensions shown in inches (centimeters).  
 2. Present on models with VFD option selected.

Model Size	A Chassis Width	B Chassis Height	D Chassis Depth	E Header Location	F Header Location	G Header Location	H Header Location	K Height with Electrical Connections	Connection Size (Grooved VIC)
050 065 080	30.00 (76.20)	73.54 (186.79)	60.00 (152.40)	10.39 (26.39)	25.75 (65.41)	45.85 (116.46)	61.20 (155.45)	76.10 (193.30)	2.5 in.

- NOTES:  
 1. Dimensions shown in inches (centimeters).  
 2. Present on models with VFD option selected.

Model	1	2	3	4
SWT	Load Water Outlet	Load Water Inlet	Source Water Outlet	Source Water Inlet



Part#: LC3071 | Revised: March 13, 2026

7300 SW 44<sup>th</sup> St  
 Oklahoma City, OK 73179  
 Phone: 800.299.9747  
 www.climatemaster.com



ClimateMaster works continually to improve its products. As a result, the design and specifications of each product at the time of order may be changed without notice and may not be as described herein. Please contact ClimateMaster's Customer Service Department at 800-299-9747 for specific information on the current design and specifications. Statements and other information contained herein are not express warranties and do not form the basis of any bargain between the parties, but are merely ClimateMaster's opinion or commendation of its products. The latest version of this document is available at www.climatemaster.com. Engineered and assembled in the USA. © ClimateMaster, Inc. All Rights Reserved 2026