



Tranquility® Two-Stage Rooftop TRT Series

Models TRT036-072 60Hz - HFC - 410A

The TRT line introduces the next stage of evolution in ClimateMaster®

WSHP Rooftops. TRT's optimize energy efficiency with capacity control by utilizing two-stage compressors paired with variable frequency drive (VFD) fan motor controls allowing the unit to operate as low as 60% of its rated full load capacity. This pairing provides occupants with a constant leaving air temperature even with large shifts in demand. The system's capabilities are enhanced even further with intelligent iGate 2 controls which reduce start-up, commissioning, and troubleshooting time. These technologies, along with other standard features and options, position the TRT as the leading Rooftop WSHP on the market!

Advantages of the Two-Stage Rooftop TRT Series:

Standard Features:

- All sizes 036 (3 ton) through 072 (6 tons) exceed ASHRAE 90.1 efficiencies
- Communicating DXM2.5 controls for reduced start-up, commissioning, and service time
- Copeland Scroll Two-Stage compressors
- Variable Frequency Drive (VFD) fan motor controls
- Eight standard safeties which include high/low pressure switches and electronic condensate overflow sensor standard
- Galvanized steel double wall construction, powder coated paint, and access doors with non-corrosive hardware

Configurable Options:

- iGate 2 thermostats for remote monitoring, adjustments, and diagnostics via myUplink mobile app and website
- Extended range insulation for geothermal applications
- Internally mounted modulating water valves that vary water flow for maximized central pumping efficiency
- ClimaDry® modulating condenser hot water reheat dehumidification
- MPC controls for interfacing with BACnet, Modbus, and N2 building management systems
- Factory installed internally mounted motorized water valves
- Manual, motorized, or modulating outside air dampers
- Factory installed electrical service disconnect

Tested To ASHRAE/AHRI/ISO 13256-1 English Units

Full Load Ratings

Model	Water Loop Heat Pump				Ground Water Heat Pump				Ground Loop Heat Pump			
	Cooling 86 °F		Heating 68 °F		Cooling 59 °F		Heating 50 °F		Cooling 77 °F		Heating 32 °F	
	Capacity BTUH	EER BTUH/W	Capacity BTUH	COP	Capacity BTUH	EER BTUH/W	Capacity BTUH	COP	Capacity BTUH	EER BTUH/W	Capacity BTUH	COP
TRT036	35,000	15.0	43,000	5.1	40,000	22.1	35,000	4.6	36,000	16.4	27,000	3.7
TRT048	46,500	14.0	59,200	4.7	53,000	20.3	48,500	4.1	48,200	15.5	37,700	3.4
TRT060	62,400	16.2	72,700	5.1	70,000	23.7	59,200	4.5	64,500	17.9	46,000	3.7
TRT072	68,000	14.5	88,000	5.0	76,000	21.3	72,000	4.4	69,000	15.8	55,000	3.6

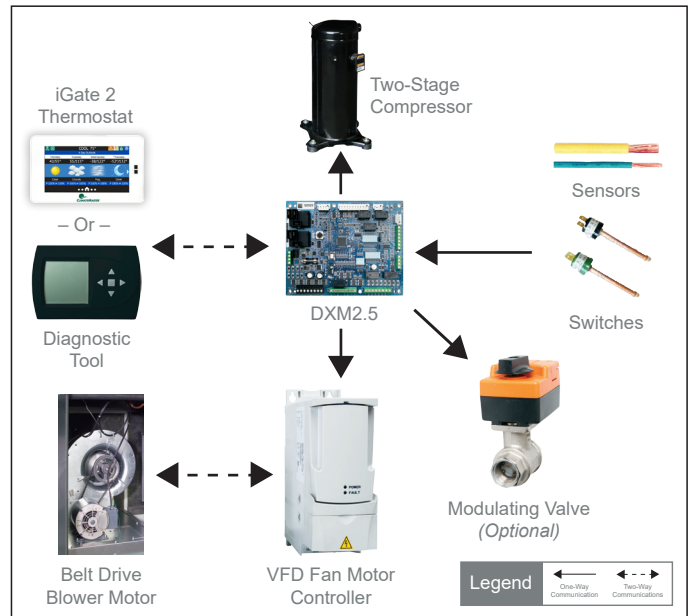
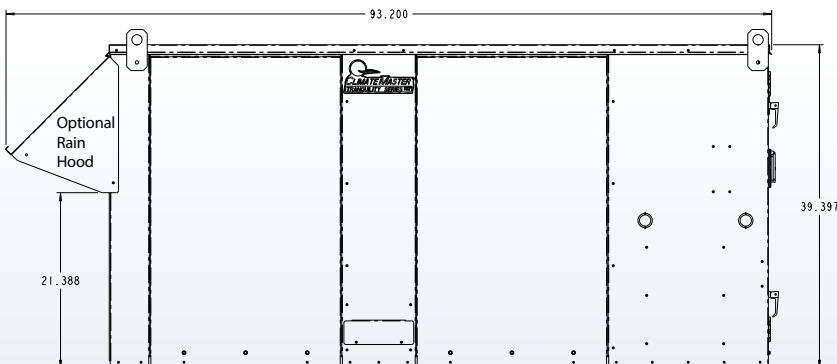
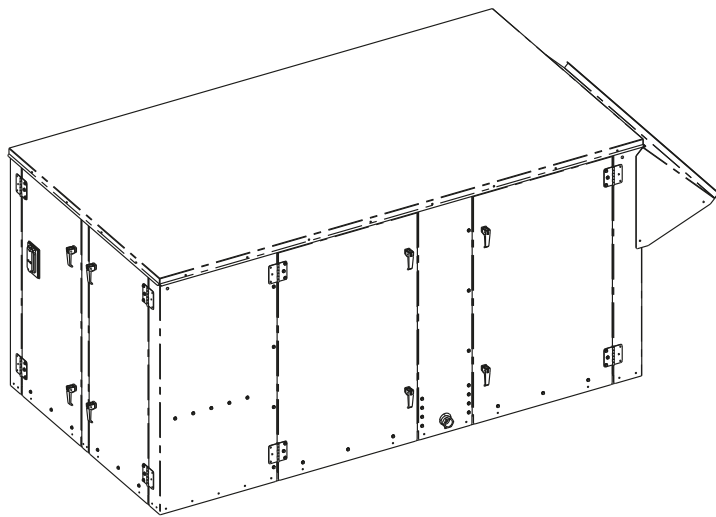
Part Load Ratings

Model	Water Loop Heat Pump				Ground Water Heat Pump				Ground Loop Heat Pump			
	Cooling 86 °F		Heating 68 °F		Cooling 59 °F		Heating 50 °F		Cooling 77 °F		Heating 41 °F	
	Capacity BTUH	EER BTUH/W	Capacity BTUH	COP	Capacity BTUH	EER BTUH/W	Capacity BTUH	COP	Capacity BTUH	EER BTUH/W	Capacity BTUH	COP
TRT036	25,000	16.4	30,500	5.5	29,000	28.0	24,000	4.6	27,500	22.6	21,000	3.9
TRT048	33,700	15.3	42,800	5.2	39,700	26.0	34,300	4.2	37,300	21.2	29,400	3.6
TRT060	45,100	17.7	53,100	5.5	51,300	30.0	42,500	4.5	48,900	24.2	36,700	3.9
TRT072	50,500	15.7	65,000	5.3	58,500	26.7	52,600	4.4	55,000	21.3	45,700	3.8

Unit Size

MODEL		W	D*	H
036 - 072	in.	43.2	80.1	39.4
	cm.	109.7	203.5	100.1

* Does not include optional rain hood



7300 S.W. 44th Street
Oklahoma City, OK 73179
Phone: 405-745-6000
climatemaster.com

LC1051
Rev. : 3/2/23

ClimateMaster works continually to improve its products. As a result, the design and specifications of each product at the time of order may be changed without notice and may not be as described herein. Please contact ClimateMaster's Customer Service Department at 1-405-745-6000 for specific information on the current design and specifications. Statements and other information contained herein are not express warranties and do not form the basis of any bargain between the parties, but are merely ClimateMaster's opinion or commendation of its products. The latest version of this document is available at climatemaster.com.
© ClimateMaster, Inc. All rights reserved 2019