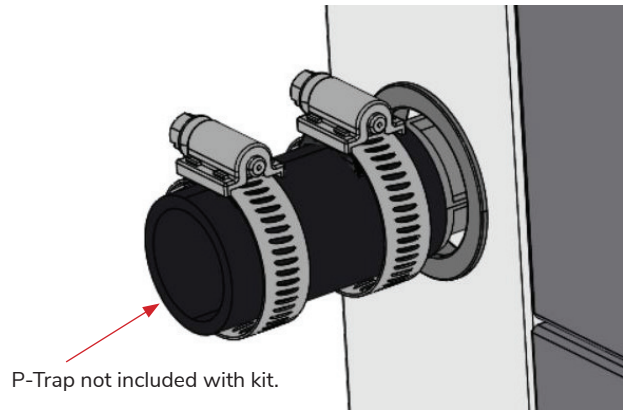




Condensate Drain Connection Kit for Polymer Drain Pan

KIT CONTENTS	
ITEM	QTY
Flex Coupling	1
Stainless Steel Hose Clamp	2
Flex Coupling Installation Instructions	1



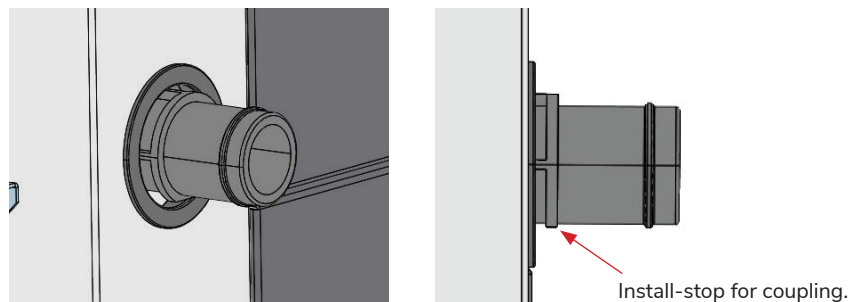
Step 1:

Locate flex coupling service kit inside unit. The kit is located in the same compartment as the IOM. Ensure all listed items are present.

Note: Remove all loose material and components from inside of unit before start up.

Step 2:

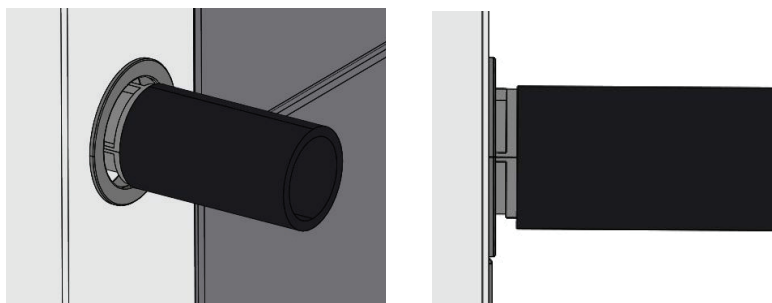
Locate condensate drain outlet on drain pan.



Step 3:

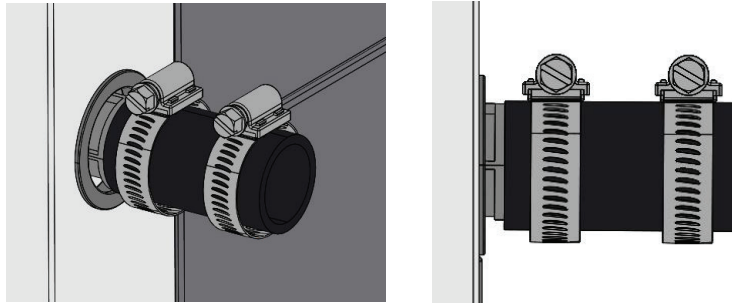
Remove the coupling from the bag and install it on the drain pan. Install the coupling by sliding it over the condensate drain outlet until it butts up against the install – stop on the outlet.

Note: Coupling must be flush with stop to prevent leaking and buildup. Coupling can accept Schedule 40/80, 3/4" PVC OR 1" copper tubing. Do not use any pipe dope, oil, lubricants, or additives to install the coupling.



Step 4:

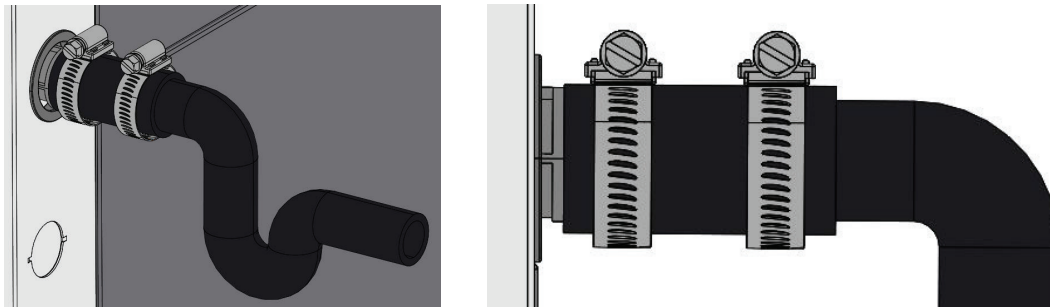
Place a hose clamp on opposing ends approximately 1/8" from each end of the coupling. Do not tighten clamps until P-Trap has been installed.



Step 5:

Insert the field-supplied P-trap into the open side of the coupling. Ensure that the P-Trap and the condensate drain outlet butt together inside the coupling.

Note: P-Trap Not Included. Coupling must butt against the condensate drain outlet to prevent leaking and buildup.



Step 6:

Tighten hose clamps to prevent leaking. Approximately 30-45 in. lbs. Do not over tighten as this can result in potential leaks.

Note: Do not use power tools/drill motors to tighten.